

**SAN BERNARDINO VALLEY WATER CONSERVATION DISTRICT
BOARD OF DIRECTORS**

REGULAR BOARD MEETING
AGENDA (REVISED)

July 25, 2012 – 12:30 p.m.

Location--1630 West Redlands Boulevard, Suite A, Redlands, California

Note: Copies of staff reports and other documents relating to the items on this agenda are on file at the District office and are available for public review during normal District business hours. New information relating to agenda topics listed, received, or generated by the District after the posting of this agenda, but before the meeting, will be made available upon request at the District office and in the Agenda Package on the Districts website.

CALL TO ORDER
PLEDGE OF ALLEGIANCE
ROLL CALL

1. CLOSED SESSION

- a) Under authority of government code section 54956.8, the board may recess to a Closed Session for a Conference with Real Property Negotiators related to the East Branch Extension Easement, located in the Santa Ana and Mill Creek Spreading Grounds APN 0168-321-10; 0168-341-04; 0168-342-04, 06, 09; 0168-381-02; 0297-051-01, 02; 0297-011-07, and 0168-311-06. Real Property negotiators are Daniel B. Cozad and David B. Cosgrove for the District and Doug Headrick for SBVMWD.
- b) The Board may convene in Closed Session to discuss exposure to litigation, under Government Code section 54956.9(b)(3)(e).
- c) Under authority of Government Code section 54956.9 (c), the Board may meet in Closed Session to decide whether to initiate litigation

2. PUBLIC PARTICIPATION

Members of the public may address the Board of Directors on any item that is within the jurisdiction of the Board; however, no action may be taken on any item not appearing on the agenda unless the action is otherwise authorized by Subdivision (b) Section 54954.2 of the Government Code.

3. ADDITIONS/DELETIONS TO AGENDA

Section 54954.2 provides that a legislative body may take action on items of business not appearing on the posted agenda under the following conditions: (1) an emergency situation exists, as defined in Section 54956.5; (2) a need to take immediate action and the need for

It is the intention of the San Bernardino Valley Water Conservation District to comply with the Americans with Disabilities Act (ADA) in all respects. If you need special assistance with respect to the agenda or other written materials forwarded to the members of the Board for consideration at the public meeting, or if as an attendee or a participant at this meeting you will need special assistance, the District will attempt to accommodate you in every reasonable manner. Please contact Athena Medina at (909) 793-2503 at least 48 hours prior to the meeting to inform her of your particular needs and to determine if accommodation is feasible. Please advise us at that time if you will need accommodations to attend or participate in meetings on a regular basis.

action came to the attention of the District subsequent to the agenda being posted; and (3) the item was posted for a prior meeting occurring not more than five calendar days prior to the date action is taken on the item, and at the prior meeting the item was continued to the meeting at which action is being taken.

4. CONSENT CALENDAR

1. Approval of Board Minutes, June 13, 2012
2. Monthly Check Register, FY Financials will be presented in August

5. ACTION ITEMS, NEW BUSINESS

A. EAST BRANCH EXTENSION II EASEMENT AGREEMENT

Recommendation:

Staff recommends that the Board authorize the General Manager to execute easement agreements in favor of San Bernardino Valley Municipal Water District (“Valley District”) for rights of way sought in connection with Valley District’s cooperative project with the State Department of Water Resources, East Branch Extension Project, Phase II, in the cumulative amount of Two Hundred Ninety-Nine Thousand Five Hundred Dollars (\$299,500.00).

B. BASIN CLEANING FOR 2012

Recommendation: Staff Recommends the Board approve cleaning and repair of 4 groundwater recharge basins to be completed by District forces and contractor support for a total not to exceed \$40,000.

C. REDISTRICTING MAPS

Recommendation: Staff recommends the Board review potential maps for Redistricting and provide feedback to staff for action at the August 8, meeting.

D. IERCD OUTREACH PROGRAMS

Recommendation: Staff recommends the Board review and consider proposal for performance of water use efficiency public outreach programs.

E. CALIFORNIA SPECIAL DISTRICTS ASSOCIATION 2012 BOARD ELECTIONS- REGION 5

Recommendation: Staff recommends the Board review the candidates for Region 5 and provide direction for voting.

6. INFORMATION ITEMS:

- A. General Manager’s Report
- B. Monthly Recharge Report
- C. Collaborative Agreement Verbal Update
- D. Future Agenda Items & Staff Task requests from Directors

7. MONTHLY BOARD MEMBER COMMITTEE ACTIVITY REPORTS, AND/OR COMMENTS BY BOARD MEMBERS

A. Appointment of District Audit Committee for 2012 – Chair to appoint

8. UPCOMING MEETINGS:

- | | | |
|-----|--------------------|---|
| 1. | July 31, 2012 | Countywide Vision Water Element Group, 9:00 a.m. (Frontier Project, Rancho Cucamonga) |
| 2. | August 6, 2012 | Basin Technical Advisory Committee, 1:30 p.m. |
| 3. | August 7, 2012 | San Bernardino Valley Municipal Water District, 2:30 p.m. |
| 4. | August 8, 2012 | Board of Directors Meeting, 1:30 p.m. |
| 5. | August 9, 2012 | Western-San Bernardino Watermaster Collaborative Meeting, 1:30 p.m. |
| 6. | August 9, 2012 | Advisory Commission on Water, 7:00 p.m. |
| 7. | August 10, 2012 | San Bernardino County Water Conference, 8:00 a.m. (Ontario Doubletree) |
| 8. | August 14-15, 2012 | ACWA's Regulatory Summit, 9:00 a.m. (Doubletree, Rohnert Park, CA) |
| 9. | August 20, 2012 | Association of San Bernardino County Special Districts Dinner, 6:00 p.m. |
| 10. | December 4-7, 2012 | ACWA Fall Conference, San Diego |

9. ADJOURN MEETING. The next regular Board meeting will be on August 8, 2012 at 1:30 p.m., at District Headquarters, 1630 W. Redlands Blvd., Redlands, CA.

SAN BERNARDINO VALLEY WATER CONSERVATION DISTRICT
BOARD OF DIRECTORS

MINUTES OF June 13, 2012
1:30 P.M.

President Corneille called the Board Meeting of the Board of Directors to order at 1:30 p.m. All present stood for the pledge of allegiance, led by President Corneille.

ROLL CALL:

BOARD MEMBERS PRESENT:

Richard Corneille, President
Melody McDonald, Vice President
Bob Glaubig, Director
John Longville, Director (1: 40 p.m.)
David E. Raley, Director
Manuel Aranda, Director

BOARD MEMBERS ABSENT:

Clare Henry Day, Director

GENERAL COUNSEL PRESENT:

David Cosgrove, Rutan & Tucker, LLP

STAFF PRESENT:

Daniel Cozad, General Manager
Athena Medina, Administrative Services Specialist
Randy Carlisle, Field Operations Supervisor

GUESTS PRESENT:

Charles Roberts, Highland Community News
Michelle Diamond, Tetra Tech
Randy Scott, Wash Plan Project Manager

1. PUBLIC PARTICIPATION

President Corneille announced this as the time for any persons present, who so desire, to make an oral presentation to the Board of Directors. Hearing none, the meeting continued with published agenda items.

2. ADDITIONS/DELETIONS TO AGENDA

There were no additions or deletions to the agenda.

3. CONSENT CALENDAR

Approval of the Board Minutes from May 16, 2012

It was moved by Director McDonald and seconded by Director Aranda to approve minutes from the May 16, 2012. The motion carried 5-0 with Directors Longville and Day noted absent from the vote.

Approval of Unaudited Financials and Check Register for, May 2012

It was moved by Director McDonald and seconded by Director Aranda to approve the Unaudited Financials. The motion carried 5-0 with Directors Longville and Day noted absent from the vote.

4. ACTION ITEMS, NEW BUSINESS

A. RESOLUTION FOR RETIREMENT OF RANDY CARLISLE

President Corneille introduced this item for discussion and approval. The resolution was read aloud to the Board by President Corneille. Field Operation Supervisor, Randy Carlisle will be retiring as of June 30, 2012 where he will have been with the District for 29 years. President Corneille noted that Mr. Carlisle will be available temporarily to answer any questions the District may have as a retired annuitant. Director McDonald and Aranda thanked Mr. Carlisle for his years of service.

It was moved by Director McDonald and seconded by Director Aranda to table this item until the next regular meeting. The motion carried 5-0 with Director Longville and Day noted absent from the vote.

B. DISTRICT AND ENTERPRISE BUDGET FOR FISCAL 2012-2013 AND PROJECT 2013-2014 BUDGET

President Corneille introduced this item for discussion. Mr. Cozad stated that he and Director Raley reviewed the budget in detail. Included in the package are the three versions; Attachment A which has no Collaborative Revenue included, Attachment B which has Collaborative Revenue included and Attachment C which is for fiscal year 2013-2014. Based on his belief that the Collaborative agreement will be completed he recommended Attachment B for discussion and consideration of adoption. If Attachment B is approved and the revenue does not come in the District will have to utilize reserves to cover expenses. Mr. Cosgrove discussed in brief the status of the Collaborative Agreement and the issues still concerning all parties involved; primarily the groundwater credit tracking system. President Corneille asked when we will have a document the Board can review. Mr. Cozad stated that Tim Moore is writing up a portion of the agreement which should be ready in the latter part of July.

Director Raley inquired as to the impact on expenses. Mr. Cozad noted that there is no significant change in the expenses only in the revenue. He added expenses for reporting and coordination as well as legal expenses. Director Raley recommended the Board approve as its budget the approach in Attachment B. President Corneille noted that director's fees are flat in the budget for next year. He also noted that this particular line item current spending is close to the maximum budget in the current budgeted. He asked that all directors submit and keep up to date their expense reports. He also asked that this item be reviewed at the mid-year point. Director McDonald noted that director's fees have come down considerably and to review mid-year would be beneficial. Discussion ensued.

It was moved by Director Raley to approve The District Budget shown in Attachment B and seconded by Director Longville. The motion carried 6-0 with Day noted absent from the vote.

C. DISTRICT POLICY APPROACH TO CALPERS CONTRIBUTIONS FOR EMPLOYEES

Mr. Cozad stated that the Administrative Committee met and reviewed the CalPERS contributions at the request of the Board. Director Raley and McDonald had several policy areas for Staff to review and identify. Mr. Cozad reviewed the policy statements shown in the board package. He identified the table which identifies the savings to the District and the cost to District employees. He noted there was not a significant cost savings to the District in the first year; the cost savings is seen over time. He also stated that several

agencies have employees pay the employee share and few pay for all of the employee contribution. Director McDonald, chair of Administrative Committee (Committee) discussed in brief the Committee's recommendation. She also noted that she did not support the Committee's recommendation to move costs to the employees. Director Raley supports the recommendation of the Committee and believes it is a policy decision that needs to be made. He stated the pension costs are a large impact on budgets and CalPERS was designed for 7% to be covered by the employee. He also stated that he does not believe this will adversely affect the employees. Director Longville concurred with Director Raley. It was noted that the increase of the employee shared contribution will have to be revisited each year and a resolution for CalPERS will have to be revised as changes are being made to how contributions are being paid.

It was moved by Director Raley to approve the policy statements, resolution and additional one half (½) percent increase in employee paid contribution and seconded by Director Longville. The motion carried 5-1 with Day noted absent from the vote and Director McDonald opposed.

D. WASH PLAN REPORT AND RECOMMENDATION

Mr. Cozad introduced this item stating Staff's recommendation is to receive and file report and approve moving forward in authorizing the project in accordance with the recommendation in the memo. The items for which Staff seeking approval are based on the phase table included in Wash Plan Decision Document. Mr. Cozad presented several maps which included additional areas of conservation. Randy Scott, Wash Plan Project Manager described the Rough Step process to the Board. The Rough Step approach is terminology used by United States Fish & Wildlife Services (USFWS); it involves disturbance or impacting activities for endangered species to stay in step with the amount of conservation or mitigation to offset the impact on the species. The rough step approach is used to assess project compliance particularly phased projects. Mr. Cozad went on to state that this process does not commit the District to any conservation or mining activities rather allows the Board to approve specific tasks by phase. The benefits of the Wash Plan are outlined on package page 58.

Mr. Cozad outlined the costs and risks. President Corneille inquired as to the additional risks and the conservation easements and how they will impact the District. David Cosgrove, legal counsel stated that conservation easements will restrict certain areas for specific activities. Director Raley feels that there should be a separate bank account and all income and expenses should be kept separate. Mr. Cozad indicated they will look at the options with District CPA and bring recommendations. Mr. Cozad also noted that staff is discussing

placing a conservation easement over areas near spreading basins that are not in direct use by the District. The mining partners agreed to pay the Districts' portion of the Wash Plan cash contribution, to be recouped from future royalties, if successful. Discussion ensued.

Included with in the document is a cost budget and risks statement as well as a pros and cons table to assist with the Boards' decision. The reason for the phases is due to the fact that some of the items need to be concluded before the District can make a financial decision to move to completion. The most significant costs to the District are legal, project management, outreach and Staff costs. Mr. Cozad recommended moving forward with the Wash Plan. Director Raley stated he is not prepared to move forward with the Wash Plan unless the mining partners cover the District cost. He asked how much the District is going to contribute. Mr. Cozad stated the estimated costs for Phase I is approximately \$30,000. Discussion ensued.

It was moved by Director McDonald to approve Phase I and the Wash Plan budget and direct Staff to take to Task force and seconded by Director Aranda. The motion carried 6-0 with Director Day noted absent from the vote.

E. PLUNGE AND ELDER CREEK COMMENTS

Mr. Cozad presented this item for discussion. Included in the package was a map of the project and comment letter for approval. The potential project area is partially on lands previously used as a shooting range which contain lead that can potentially contaminate the river.

It was moved by Director McDonald to approve comment letter and seconded by Director Aranda. The motion carried 6-0 with Director Day noted absent from the vote.

F. DISTRICT PRIORITIES UPDATE

Mr. Cozad performed the update. There was no action taken.

G. STATEMENT OF INVESTMENT POLICY REVIEW AND BANKING INSTITUTION CHANGE

Mr. Cozad presented the revised investment policy for review and approval. Also, he requested authorization to change banking institutions; presented in detail were a schedule of fees and detailed information.

It was moved by Director Raley to approve Statement of Investment Policy, Resolution No. 479 and authorize Staff to take all actions to change banking institutions to Citizen's Business Bank and seconded by Director Longville. The motion carried 6-0 with Director Day noted absent from the vote.

5. INFORMATION ITEMS:

A. General Manager's Report

A construction firm has requested that the District assist them in finding an alternative haul route for construction materials. Staff has asked United States Fish & Wildlife Services if the contractor can use existing roads and easements with restoration and rehabilitation on the Borrow Pit area. There will be additional meetings to discuss the particulars of this project; today was strictly for introductory purposes. No detailed information available at this time.

B. Monthly Recharge Report

Mr. Cozad noted there are two reports included in the board packet.

C. Collaborative Agreement Verbal Update

Presented previously.

D. Future Agenda Items & Staff Task requests from Directors

President Corneille noted that the July meeting will be July 25th.

6. MONTHLY BOARD MEMBER COMMITTEE ACTIVITY REPORTS, AND /OR COMMENTS BY BOARD MEMBERS

Director Activity Reports

Director Raley attended the San Bernardino Valley Municipal Water District's (SBVMWD) Budget Workshop. They included the \$400,000 for the Collaborative Agreement as an expense item in their budget. Also, they have \$100,000 budget item for maintenance and replacement costs if any basins are damaged in Mill Creek; a letter of agreement is still being developed.

Director Aranda and Glaubig made no report.

Director Longville attended the Community Garden Dedication on Friday where SBVMWD and other entities were in attendance. He also attended a dedication of a freeway by SANBAG.

Director McDonald attended the BTAC meeting where SBVMWD discussed the possibility of revisiting the Pilot Dewatering Program Project the District was involved in some time ago. They may also be sending out reports monthly for this project. There was also discussion on State Water Project water allocations. There will be upcoming Santa Ana Sucker court hearings in September. She also attended the Joint Board Meeting at SBVMWD with San Geronio Pass Water Agency.

President Corneille noted that he will be performing technical editing for the Operations Management Manual and commended Staff and Interns on the amount of detailed information that has been added to the updated report. This morning he attended the Inland Empire Resource Conservation District (IERCD) meeting and presented information on the District, Wash Plan and the potential of being a partner pertaining to public outreach. IERCD submitted a proposal to the District for outreach programs which cost \$100 per session. The next Advisory Commission meeting will be August 9th.

7. UPCOMING MEETINGS

None discussed.

8. CLOSED SESSION

It was moved by Director McDonald and seconded by Director Aranda and at 4:13 p.m. the Board adjourned into Closed Session.

Legal counsel announced the Board would adjourn to closed session on all items listed on published agenda. Under the authority of Government Code section 54956.9 (b)(3)(e) the Board entered closed session to discuss exposure to litigation.

At 4:30 p.m. the Board reconvened into open session and General Counsel reported no reportable action was taken.

9. ADJOURN MEETING

It was moved by Director Longville and seconded by Director Aranda to adjourn to the next scheduled meeting. The motion carried unanimously.

At 4:31 p.m. the meeting adjourned to the regular Board meeting scheduled for July 25, 2012 at 1:30 p.m., at District Headquarters, 1630 W. Redlands Blvd., Redlands, CA.

Daniel B. Cozad
General Manager

8:53 AM

07/23/12

San Bernardino Valley Water Conservation District
Check Detail
June 2012

Num	Date	Name	Account	Class	Original Amount
	6/8/2012	ADP	1010 · Bank of America -...		-64.85
			6042 · Payroll Processing		64.85
TOTAL					64.85
	6/22/2012	ADP	1010 · Bank of America -...		-66.85
			6042 · Payroll Processing		66.85
TOTAL					66.85
2614	6/19/2012	Day Lite Maintenance, Inc.	1015 · Redlands Plaza B...		-144.00
			6016.01 · Redlands Plaza...	2-Redl...	144.00
TOTAL					144.00
2628	6/19/2012	Castro Landscaping Services	1015 · Redlands Plaza B...		-500.00
			6016.01 · Redlands Plaza...	2-Redl...	300.00
			6015 · Mentone House M...	2-Redl...	200.00
TOTAL					500.00
2629	6/19/2012	Edison - Redlands Plaza	1015 · Redlands Plaza B...		-198.50
			5420 · Electricity	2-Redl...	198.50
TOTAL					198.50
18023	6/19/2012	Melody McDonald	1010 · Bank of America -...		-2,797.28
		SBVWCD	6401 · Directors' Fees	4-Gene...	1,576.00
		SBVWCD	6410 · Mileage	4-Gene...	205.35
		SBVWCD	6415 · Air Fare	4-Gene...	863.20
		SBVWCD	6420 · Other Travel	4-Gene...	72.25
		SBVWCD	6425 · Meals	4-Gene...	80.48
TOTAL					2,797.28
18024	6/19/2012	Raley, David	1010 · Bank of America -...		-985.00
			6401 · Directors' Fees	4-Gene...	985.00
TOTAL					985.00
18025	6/19/2012	Corneille, Richard	1010 · Bank of America -...		-2,013.59
			6401 · Directors' Fees	4-Gene...	1,182.00
			6410 · Mileage	4-Gene...	436.24
			6430 · Lodging	4-Gene...	218.80
			6525 · Meals	4-Gene...	176.55
TOTAL					2,013.59
18026	6/19/2012	Glaubig, Bob	1010 · Bank of America -...		-197.00
			6401 · Directors' Fees	4-Gene...	197.00
TOTAL					197.00
18027	6/19/2012	Aranda, Manuel	1010 · Bank of America -...		-985.00
			6401 · Directors' Fees	4-Gene...	985.00
TOTAL					985.00

San Bernardino Valley Water Conservation District

Check Detail

June 2012

Num	Date	Name	Account	Class	Original Amount
18028	6/19/2012	Experienced Tractor Parts	1010 · Bank of America -...		-300.22
			5210 · Equipment Mainte...	1-Grou...	300.22
TOTAL					300.22
18029	6/19/2012	Star Auto Parts	1010 · Bank of America -...		-1.98
			5210 · Equipment Mainte...	1-Grou...	1.98
TOTAL					1.98
18030	6/19/2012	Home Depot Credit Services	1010 · Bank of America -...		-97.97
			5215 · Property Maintena...	1-Grou...	54.61
			5210 · Equipment Mainte...	1-Grou...	43.36
TOTAL					97.97
18031	6/19/2012	Valero Marketing & Supply Comp...	1010 · Bank of America -...		-114.30
			5320 · Fuel	1-Grou...	114.30
TOTAL					114.30
18032	6/19/2012	Lowe's Companies, Inc.	1010 · Bank of America -...		-300.05
			5210 · Equipment Mainte...	1-Grou...	62.87
			5215 · Property Maintena...	1-Grou...	237.18
TOTAL					300.05
18033	6/19/2012	Pat's Pots	1010 · Bank of America -...		-70.00
			5460 · Water / Trash / Se...	1-Grou...	70.00
TOTAL					70.00
18034	6/19/2012	American Express	1010 · Bank of America -...		-1,766.08
			6012 · Office Maintenance	4-Gen...	45.00
			6030 · Office Supplies	4-Gen...	151.13
			6039 · Postage and Over...	4-Gen...	30.97
			6415 · Air Fare	4-Gen...	549.20
			6420 · Other Travel	4-Gen...	177.72
			6430 · Lodging	4-Gen...	536.46
			6520 · Travel, Other (rent...	4-Gen...	14.00
			6530 · Lodging	4-Gen...	261.60
TOTAL					1,766.08
18035	6/19/2012	Verizon California - 2503	1010 · Bank of America -...		-684.51
			5440 · Telephone	4-Gen...	484.51
			5470 · Internet Services	4-Gen...	200.00
TOTAL					684.51
18036	6/19/2012	Image Source	1010 · Bank of America -...		-537.04
			6033 · Office Equipment ...	4-Gen...	537.04
TOTAL					537.04

San Bernardino Valley Water Conservation District

Check Detail

June 2012

Num	Date	Name	Account	Class	Original Amount
18037	6/19/2012	Assoc. San Bernardino County S...	1010 · Bank of America -...		-132.00
			6525 · Meals	4-Gener...	132.00
TOTAL					132.00
18038	6/19/2012	Randy L. Scott	1010 · Bank of America -...		-4,675.77
			5122 · Wash Plan Profess...	3-Land ...	4,675.77
TOTAL					4,675.77
18039	6/19/2012	Smart & Final	1010 · Bank of America -...		-210.84
			6004 · Meeting Expenses	4-Gener...	158.32
			6019 · Janitorial Supplies	4-Gener...	52.52
TOTAL					210.84
18040	6/19/2012	Maris, LLC (dba Total Testing)	1010 · Bank of America -...		-80.00
			6090 · Subscriptions/Publi...	4-Gener...	80.00
TOTAL					80.00
18041	6/19/2012	Netstellar	1010 · Bank of America -...		-450.00
			5160 · IT Support	4-Gener...	450.00
TOTAL					450.00
18042	6/19/2012	Edison -5552	1010 · Bank of America -...		-206.99
			5420 · Electricity	4-Gener...	143.41
			5420 · Electricity	2-Redl...	63.58
TOTAL					206.99
18043	6/19/2012	Edison - 7241	1010 · Bank of America -...		-50.50
			5420 · Electricity	1-Grou...	50.50
TOTAL					50.50
18044	6/19/2012	ACWA Health Benefits Authority	1010 · Bank of America -...		-5,854.34
			6110 · Vision Insurance	4-Gener...	25.09
			6130 · Dental Insurance	4-Gener...	105.01
			6150 · Medical Insurance	4-Gener...	1,509.12
			6110 · Vision Insurance	1-Grou...	47.49
			6130 · Dental Insurance	1-Grou...	198.77
			6150 · Medical Insurance	1-Grou...	2,856.54
			6110 · Vision Insurance	2-Redl...	6.27
			6130 · Dental Insurance	2-Redl...	26.25
			6150 · Medical Insurance	2-Redl...	377.28
			6110 · Vision Insurance	3-Land ...	10.75
			6130 · Dental Insurance	3-Land ...	45.00
			6150 · Medical Insurance	3-Land ...	646.77
TOTAL					5,854.34

8:53 AM

07/23/12

San Bernardino Valley Water Conservation District

Check Detail

June 2012

Num	Date	Name	Account	Class	Original Amount
100042N	6/27/2012	PERS	1010 · Bank of America -...		-45,969.75
		SBVWCD:General Administration	6170 · PERS Retirement	4-Gen...	12,871.53
		SBVWCD:General Administration	6170 · PERS Retirement	1-Grou...	24,363.97
		SBVWCD:General Administration	6170 · PERS Retirement	2-Redl...	3,217.88
		SBVWCD:General Administration	6170 · PERS Retirement	3-Land ...	5,516.37
TOTAL					45,969.75



SAN BERNARDINO VALLEY WATER CONSERVATION DISTRICT

Established 1932

1630 West Redlands Boulevard, Suite A
Redlands, CA 92373-8032
(909) 793-2503
Fax: (909) 793-0188

P.O. Box 1839
Redlands, CA 92373-0581
Email: info@sbvwcd.dst.ca.us
www.sbvwd.dst.ca.us

Memorandum No. 1107

To: Board of Directors

From: Daniel Cozad, General Manager and David B. Cosgrove, General Counsel

Date: July 25, 2012

Subject: East Branch Extension Property Acquisitions from Valley District -- EBX--4 and EBX--8

RECOMMENDATION

Staff recommends that the Board authorize the General Manager to execute easement agreements in favor of San Bernardino Valley Municipal Water District ("Valley District") for rights of way sought in connection with Valley District's cooperative project with the State Department of Water Resources, East Branch Extension Project, Phase II, in the cumulative amount of Two Hundred Ninety-Nine Thousand Five Hundred Dollars (\$299,500.00)

BACKGROUND

For some time, District staff has been involved in negotiations with the State Department of Water Resources ("DWR") and Valley District, regarding right-of-way sought by both entities over the Conservation District's property on which the MWD Inland Feeder was previously constructed, and the Mill Creek Spreading Grounds, for implementation of the East Branch Extension, Phase II Pipeline Project. The right-of-way sought consists of two different parcels, denominated EBX – 4 and EBX – 8 by DWR. EBX – 4 consists of some 5.89 acres of permanent pipeline easement, and some 17.69 acres of temporary construction easement. EBX – 8 consists of approximately 12.19 acres of permanent pipeline easement, and 24.73 acres of temporary construction easement. Offer letters for acquisition of these properties were sent pursuant to Government Code section 7267.2 from DWR on June 10, 2010. As the party responsible for the costs of the acquisition, Valley District has taken the lead role in negotiating with the Conservation District on the acquisition. Negotiations consisted of a number of informal meetings between the General Managers of the Conservation District and Valley District, and direct negotiations with ad-hoc committees of board members of both agencies.

These negotiations have led to a successful result, in which the parties have agreed to a total just compensation for EBX – 4 of Seventy-Four Thousand Five Hundred and Seventy Five Dollars (\$74,575.00) and EBX – 8 in the amount of Two Hundred Twenty-Five Thousand Dollars (\$225,000.00), for a total net just compensation of Two Hundred Ninety-Nine Thousand Five Hundred and Seventy Five Dollars (\$299,575.00).

BOARD
OF
DIRECTORS

Richard W. Corneille
Clare Henry Day

Bob Glaubig
John Longville

David E. Raley
Melody McDonald
Manuel Aranda, Jr.

GENERAL
MANAGER

Daniel B. Cozad

Staff has been in communication with Valley District regarding documentation of the transfer, and final escrow to transfer the applicable rights-of-way. These attempts at final documentation have been hindered somewhat by DWR's preference for use of its form right-of-way documentation, which includes certain items Conservation District staff does not believe are appropriate, particularly in this context of transfer of right-of-way from one public agency to another. Conservation District staff has forwarded revised documents to Valley District, which staff hopes will be able to be processed by the time of the Board meeting on July 25, 2012.

In the event final documentation is not available, however, staff requests the Board to authorize the General Manager to execute applicable right-of-way contracts, and easement deeds for both pipeline easements and temporary construction easements, in the amount of the square footages encompassed within the EBX – 4 and EBX – 8 right-of-way required for the East Branch Extension Project, subject to approval as to form by the District's General Counsel.

Staff will have mapping of the applicable rights-of-way areas, and will be available to answer any further questions, should any arise during the Board's consideration of this matter.

FISCAL IMPACT

The District Approved balanced budget for 2011-2012 included use of the \$172,440. This settlement provides \$127,135 in additional revenue that may be needed to offset losses in FY2011-12 or 2012-13. Funds in excess are slated by the Board Reserve Policy to be contributed to the District General Fund Reserve.



SAN BERNARDINO VALLEY WATER CONSERVATION DISTRICT

Established 1932

1630 West Redlands Boulevard, Suite A
Redlands, CA 92373-8032
(909) 793-2503
Fax: (909) 793-0188

P.O. Box 1839
Redlands, CA 92373-0581
Email: info@sbvwcd.dst.ca.us
www.sbvwd.dst.ca.us

Memorandum No. 1108

To: Board of Directors, Resources Committee Members

From: General Manager, Daniel Cozad;

Date: July 25, 2012

Subject: 2012 Basin Cleaning and Repairs

RECOMMENDATION

Staff recommends the Board approve and authorize the General Manager to schedule and complete 2012 cleaning and repairs of four Mill Creek and Santa Ana Basins to be completed by District forces and equipment rental or contractor support for a total not to exceed \$40,000.

BACKGROUND

The District has had limited water operations in the Mill Creek and Santa Ana River Basins in late 2011 and dry conditions so far in 2012. The limited use and low volume of water require cleaning of only four basins in preparation for late fall and winter rains.

CLEANING AND REPAIRS

Staff has identified level of effort and cost related to the Mill Creek and Santa Ana Basins. Staff is recommending that the basin cleaning be done with District staff and that the materials be stored at the edge of the basin due to lack of market for the material.

Staff believes that the cleaning in basins 1, 12, the bifurcation basin below the Parshall flume and the areas between basin 14 and 15 are all that will be required. Further the latter two are technical tasks that the District Staff can perform. The cleaning of the larger basins are needed mostly annually and the file staff believe they can accomplish this work because a longer time is likely available before significant water will need to be recharged. The cost estimated at \$40,000 includes rental of equipment to assist with larger basins or specialty equipment for areas of Santa Ana Basins. Staff believes they may not need some or all of the equipment but need to have authority if needed.

FISCAL IMPACT

Equipment rental and or contractor and staff costs of up to \$40,000 are included in the capital budget for construction and basin cleaning. \$90,000 is budgeted and a percentage of these costs is reimbursable from SBVMWD under current agreements for water spreading. The recommended costs are within the approved 2011-12 budget.

BOARD
OF
DIRECTORS

Richard W. Corneille
Clare Henry Day

Bob Glaubig
John Longville

David E. Raley
Melody McDonald
Manuel Aranda, Jr.

GENERAL
MANAGER

Daniel B. Cozad



SBVWCD
Santa Ana Basin Cleanout 2012

0 430 860 1,720 Feet

Data Sources:
 SBVWCD GIS
 ESRI Bing Imagery 2010

C. Brudin 2012

M:\Projects\SpreadingBasins\SantaAnaSpreading_basins_cleanout2012



SBVWCD

Mill Creek Basin Cleanout 2012

0 362.5 725 1,450 Feet

Data Sources:
SBVWCD GIS
ESRI Bing Imagery 2010
L. Pierce February 2011
C. Brudin July 2012
M:\Projects\SpreadingBasins\MillCreekSpreading_2012_cleanout.mxd



SAN BERNARDINO VALLEY WATER CONSERVATION DISTRICT

Established 1932

1630 West Redlands Boulevard, Suite A
Redlands, CA 92373-8032
(909) 793-2503
Fax: (909) 793-0188

P.O. Box 1839
Redlands, CA 92373-0581
Email: info@sbvwcd.dst.ca.us
www.sbvwd.dst.ca.us

Memorandum No. 1109

To: Board of Directors

From: General Manager, Daniel B. Cozad

Date: July 25, 2012

Subject: REDISTRICTING MAPS FOR FIVE DIVISIONS

RECOMMENDATION

Staff recommends the Board review and discusses the potential maps presented for redistricting and direct staff to prepare a five division redistricting map and resolution for approval at the August 8, 2012 Board meeting.

BACKGROUND

The District is required to review Division Boundaries after the decennial US Census. All political bodies use the same information from the US Census Bureau. The purpose of the redistricting is to insure each Division of District is as nearly equal in population as may be.

Elections Code section 22000

a) Each district required by its authorizing act to adjust division boundaries pursuant to this section shall, by resolution, after each federal decennial census, and using that census as a basis, adjust the boundaries of any divisions so that the divisions are, as far as practicable, equal in population and in compliance with Section 1973 of Title 42 of the United States Code(VOTING RIGHTS ACT), as amended, to the extent those provisions are applicable. In adjusting the boundaries of the district, the board may give consideration to the following factors: (1) topography, (2) geography, (3) cohesiveness, contiguity, integrity, and compactness of territory, and (4) community of interests of the district. This section does not apply to districts in which only landowners vote for directors or whose directors are all elected at large or appointed.

(b) The resolution specified in subdivision (a) shall be adopted by a vote of not less than a majority of the directors.

The District is currently comprised of seven Divisions. Figure 1 shows the District's Boundary and Division Boundaries. The Divisions were based on the 2000 census information. Currently Division 2 and 4 contain majority Hispanic population. In Figure 2, the Districts current seven division boundaries are shown with the 2010 population in the census blocks that make up the divisions.

BOARD
OF
DIRECTORS

Richard W. Corneille
Clare Henry Day

Bob Glaubig
John Longville

David E. Raley
Melody McDonald
Manuel Aranda, Jr.

GENERAL
MANAGER

Daniel B. Cozad

The District's population in the 2010 census is estimated at 227,529 persons with seven divisions the ideal division would contain 32,504 persons. The current boundaries contain between 30,397 and 35,366 persons. Division 3 is the highest above the ideal and Division 1 is the lowest above the ideal. Based on this deviation the Board is required to redistrict to equalize the Divisions.

In November 2010 the Board passed Resolution 427 stating the Board's intent to move from seven divisions to five divisions. SB-235 authored by and supported by the District provides for this change of divisions without a vote of the entire District. This law went into effect on January 1, 2012. This law requires the District vote to make the change more than 180 days preceding the election of a director. Additionally to make this change:

1. The Board must adopt by vote of two-thirds (5 members), a resolution proposing to reduce the number of directors from seven to five. The resolution shall contain a map and description of the boundaries for the five divisions proposed to be established.
2. The Board secretary shall set a date for a public hearing on the proposal to reduce the number of directors, which shall be not less than 30 days and not more than 60 days after the date on which the board adopted the resolution. The secretary shall give notice of the hearing, which shall include a description of the proposal and shall contain a map and general description of the proposed boundaries of the five divisions. The District must also publish notice of the hearing according to Section 6063 of the Government Code in at least one newspaper of general circulation within the jurisdiction of the district at least 10 days before the hearing.
3. The Board shall hold the hearing to receive and consider any written or oral comments regarding the proposed reduction in the number of directors. After receiving and considering those comments, the board, by a recorded vote of two-thirds of the total membership of the board, shall do either of the following:
 - (1) Disapprove the proposal.
 - (2) Adopt a resolution that orders the reduction in the number of members of the board.

A reduction in the number of directors and a change in division boundaries pursuant to this section shall not affect the term of office of any director. A director of a division for which boundaries have been changed shall continue to be the director of the division bearing the number of his or her division until the office becomes vacant by means of term expiration or otherwise, whether or not the director is a resident within the boundaries of the division as changed. The successor to the office of a division for which boundaries have been changed shall be a resident and voter of that division.

At its meeting on April 2012 the Board affirmed its prior agreement to move toward five members and direct staff to prepare potential alternate maps for review. Based on the discussion in the meeting staff has developed 7 maps described below:

Discussion and Direction to Staff

The provided maps attached to the memo and described below are not intended to be recommended division maps and have not been reviewed for voter rights act requirements, but present seven options based on population and census tract boundary constraints for the District. The ideal map would have five divisions containing a population of 45,516. Each scenario is described below and shown in Attachment 1.

Scenario 1

Scenario 1 provides for five nearly equal divisions and with variances less than 1% (ranging from .03% to .71%). Population totals range from 45236 to 45868. This scenario map has Directors Day and Raley (terms ending in 2013) in Division 1, and Directors Corneille and Glaubig (terms ending 2015) in Division 3 and only one director in all other divisions. This map is shown as page 1 of Attachment 1.

Scenario 2

Scenario 2 also provides for five nearly equal divisions and with variances less than 1% (ranging from .03% to .62%). Population totals range from 45261 to 45774. This scenario map has Directors Day and Corneille (terms ending in 2013 and 2015 respectively) in Division 1, and Directors Raley and Glaubig (terms ending in 2013 and 2015 respectively) in Division 3 and only one director in all other divisions. This map is shown as page 2 of Attachment 1.

Scenario 3

Scenario 1 provides for five nearly equal divisions and with variances less than 1% (ranging from .76% to .21%). Population totals range from 45168 to 45744. This scenario map has Directors Day and Raley (terms ending in 2013) in Division 1, and Directors Corneille and Glaubig (terms ending 2015) in Division 3 and only one director in all other divisions. This map also has no divisions crossing Santa Ana Wash divide in the District boundary. This map is shown as page 3 of Attachment 1.

Scenario 4

Scenario 4 provides for five nearly equal divisions and with variances less than 1% (ranging from .02% to .2%). Population totals range from 45428 to 45565. This scenario map has Directors Day and Raley (terms ending in 2013) in Division 1, and Directors Corneille and Glaubig (terms ending 2015) in Division 3 and only one director in all other divisions. This map also has no divisions crossing Santa Ana Wash divide in the District boundary. This map is shown as page 4 of Attachment 1.

Scenario 5

Scenario 5 provides for five nearly equal divisions and with variances less than 1% (ranging from .02% to .2%). Population totals range from 45424 to 45573. This scenario map has Directors Day and Raley (terms ending in 2013) in Division 1, and Directors Corneille and Glaubig (terms ending 2015) in Division 3 and only one director in all other divisions. This map also has no divisions crossing Santa Ana Wash divide in the District boundary. This map is shown as page 5 of Attachment 1.

Scenario 6

Scenario 6 provides for five nearly equal divisions and with variances less than 1% (ranging from .06% to .42%). Population totals range from 45325 to 45681. This scenario map has Directors Day and Raley (terms ending in 2013) in Division 1, and Directors Corneille and Glaubig (terms ending 2015) in Division 3 and only one director in all other divisions. This map also has no divisions crossing Santa Ana Wash divide in the District boundary. This map is shown as page 6 of Attachment 1.

Scenario 7

Scenario 1 provides for five nearly equal divisions and with variances less than 1% (ranging from .16% to .96%). Population totals range from 45091 to 45953. This scenario map has Directors Day and Raley (terms ending in 2013) in Division 1, and Directors Corneille and Glaubig (terms ending 2015) in Division 3 and only one director in all other divisions. This map also has no divisions crossing Santa Ana Wash divide in the District boundary. This map is shown as page 7 of Attachment 1.

Interns and staff prepared these scenarios and staff will prepare final based on Direction from the Board at this meeting.

Staff will use also use the Boards prior direction from September 2011 using the following guidelines:

- Consider the topography, geography and cohesiveness, contiguity, integrity, and compactness of the Divisions
- Consider Communities of interest, zip code and census block boundaries and continuity with existing Divisions
- District population should ideally be within 1% of each other
- Voters Rights Act tests for impairment/dilution should be documented by District Counsel and added to the documentation produced

Next Steps

The San Bernardino County Registrar of Voters requires the District adopt a resolution and convey the boundaries of the divisions to the at least 180 days prior to the first election after the census is released. SB-235 also requires any changes be complete at least 180 days prior to the next election. Our next elections will be in 2013 and so all redistricting should be completed in fiscal year 2011-2012.

Staff Requests the Board provide direction on five or seven divisions so staff can prepare all required information and maps for the Boards consideration at the June 2012 meeting.

FISCAL IMPACT

There is no direct fiscal impact to the redistricting; staff is doing the work in-house so only software and data costs are a factor and estimated at about \$5000. The long term cost reduction in election costs and Directors costs would have a long term benefit to the District and reduce its operating costs in years when elections are scheduled. Staff prepared Table 1. below to document the range of potential savings.

Table 1

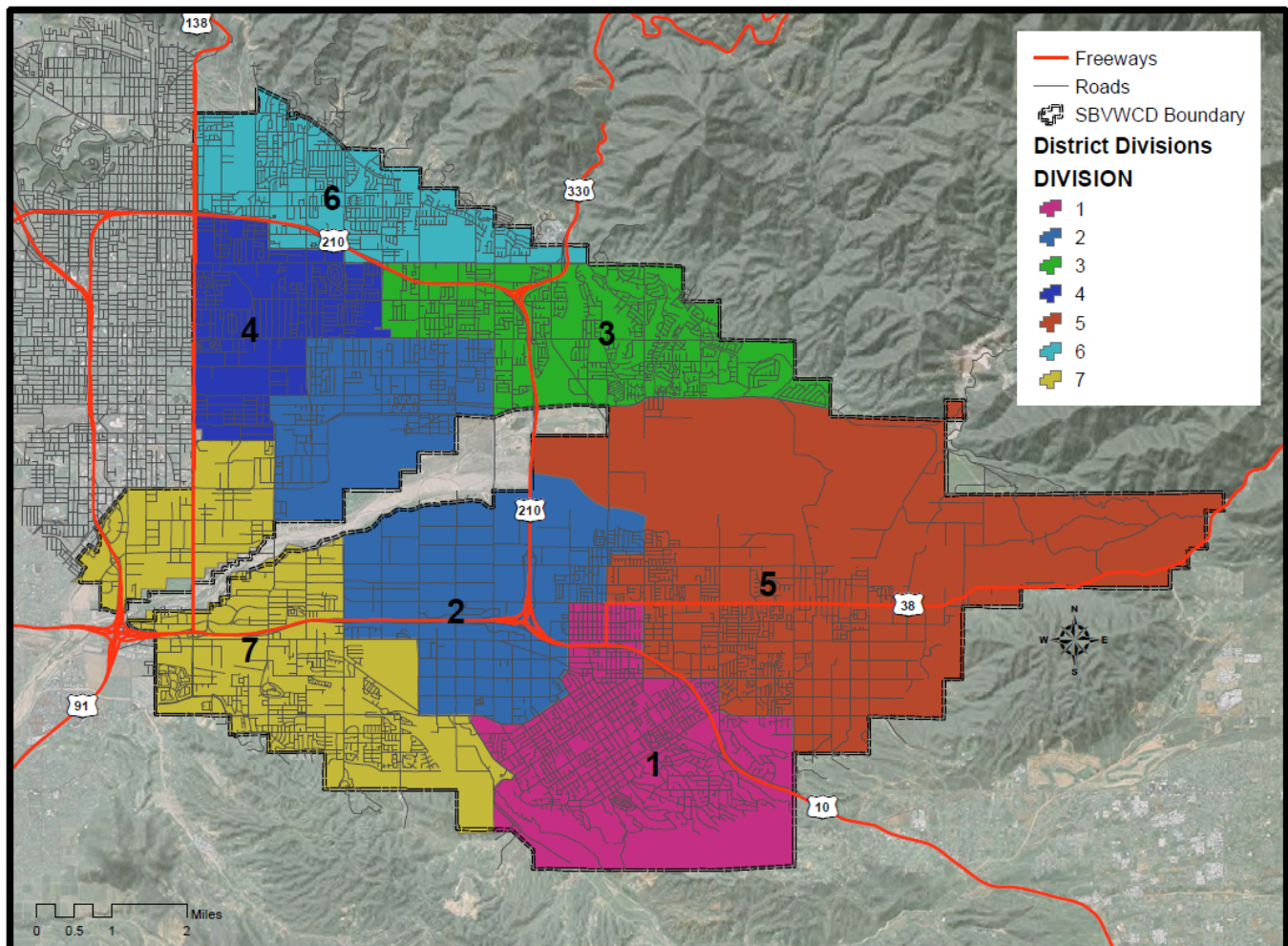
Redistricting Division Reduction Costs and Benefits

Cost Area Description	Divisions 7	Divisions 5	Average Savings	Assumptions
Max Director Fees	\$148,932	\$106,380	\$42,552	Assumes 9 Meetings/Div/Mo.
Budgeted Director Fees	\$70,000	\$50,000	\$20,000	2011-12 Budget
Budgeted Expenses	\$20,000	\$14,286	\$5,714	2011-12 Budget
Elections Base Fee	\$1,050	\$750	\$300	Base fee estimate \$600
Election per Reg. Voter	\$70,000	\$70,000	\$0	Same number of Challengers

Estimate	Annual	10 Years (with 3% inflation)
Budgeted Based Savings	\$26,014	\$298,224.63
Maximum Savings	\$48,566	\$556,758.04

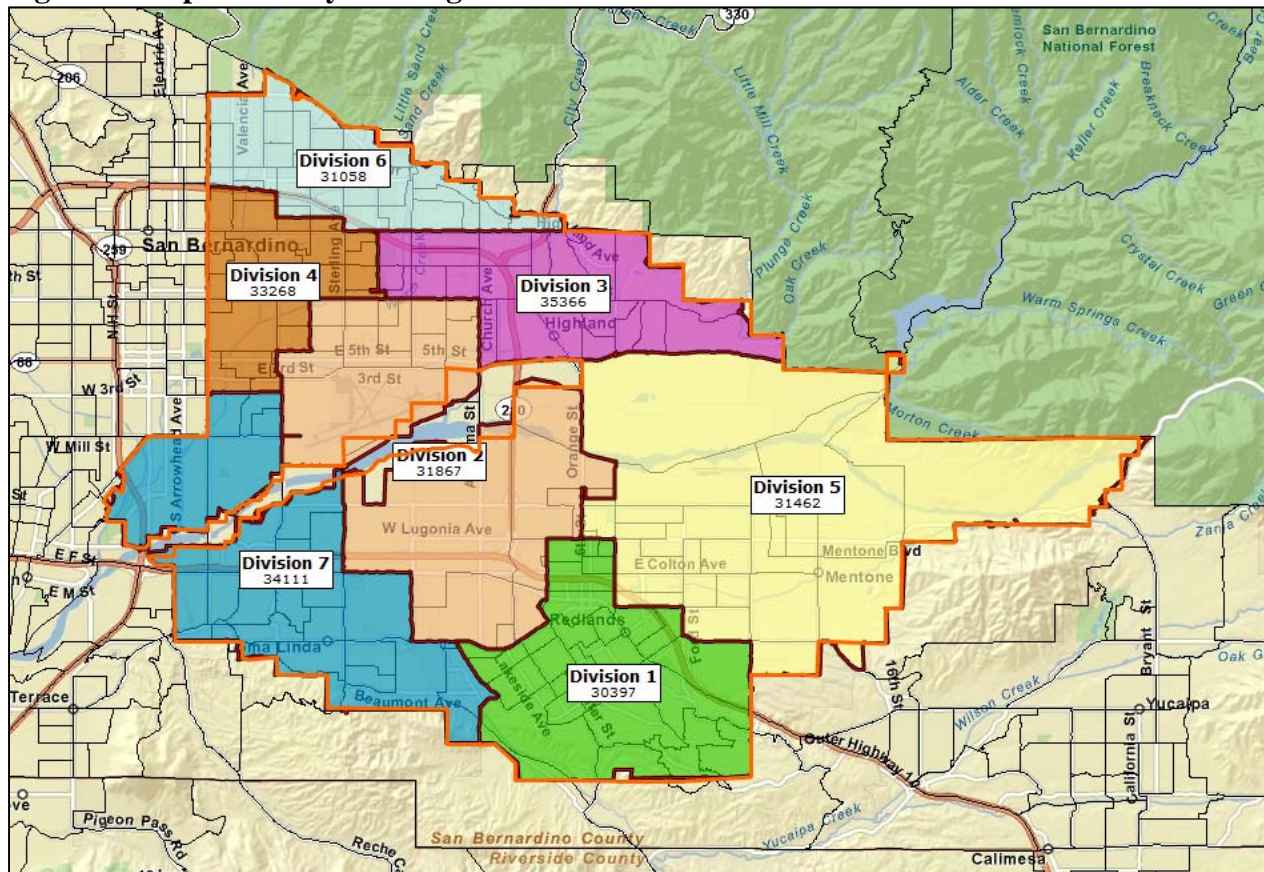
FIGURES

Figure 1 Current District Boundaries based on the 2000 Census



Water District Division Boundaries

Created by M. O'Carroll
DistrictDivisionBoundary.mxd
April 2011

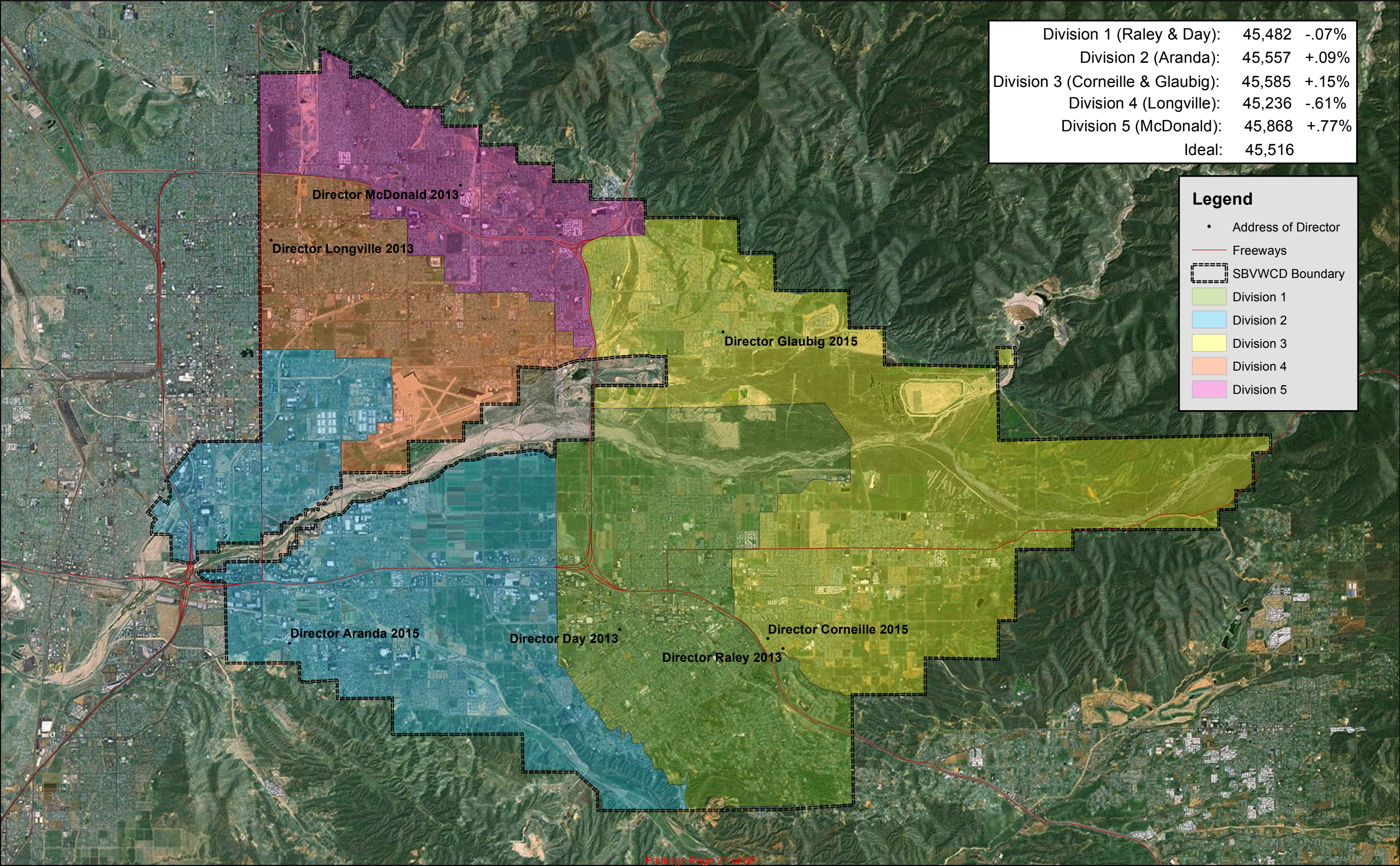
Figure 2 - Population By Existing Division based on 2010 Census

Population Summary Report

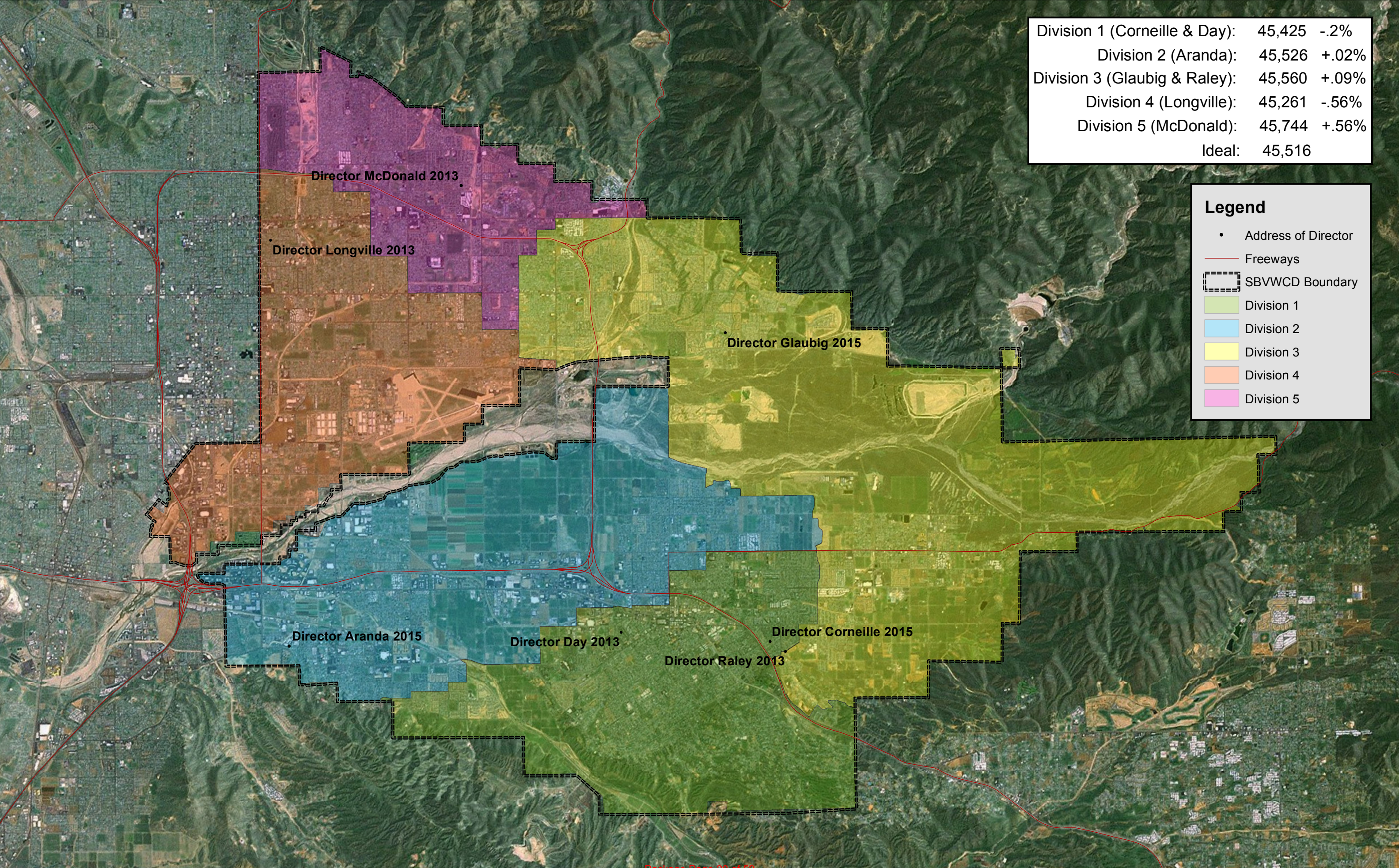
Division	Total Population	Deviation Pop	Deviation %	Non-Hispanic white (%)	Hispanic (%)	Non-Hispanic black (%)	Non-Hispanic Asian (%)	Non-Hispanic Hawaiian/ Pacific Islander or Other (%)
Division 1	30,397	-2,107	-6%	60.53	26.7	4.61	6.35	0.62
Division 2	31,867	-637	-2%	23.5	53.42	11.42	9.5	0.54
Division 3	35,366	2,862	9%	40.23	37.65	10.98	9.23	0.53
Division 4	33,268	764	2%	16.95	62.87	14.95	3.17	0.65
Division 5	31,462	-1,042	-3%	52.9	32.48	5.54	6.96	0.8
Division 6	31,058	-1,446	-4%	33.06	44.37	17.19	3.07	0.88
Division 7	34,111	1,607	5%	30.12	30.85	9.33	27.15	0.97
Total	227,529	32,504	-15%					

Total Population: 227,529
 Ideal Population: 32,504
 Mean Deviation: 1,387
 Mean Percent Deviation: 88.82
 Largest Positive Deviation: 2,862
 Largest Negative Deviation: -2,107
 Overall Range in Deviation: -4,969
 Overall Range in Deviation %: -15%

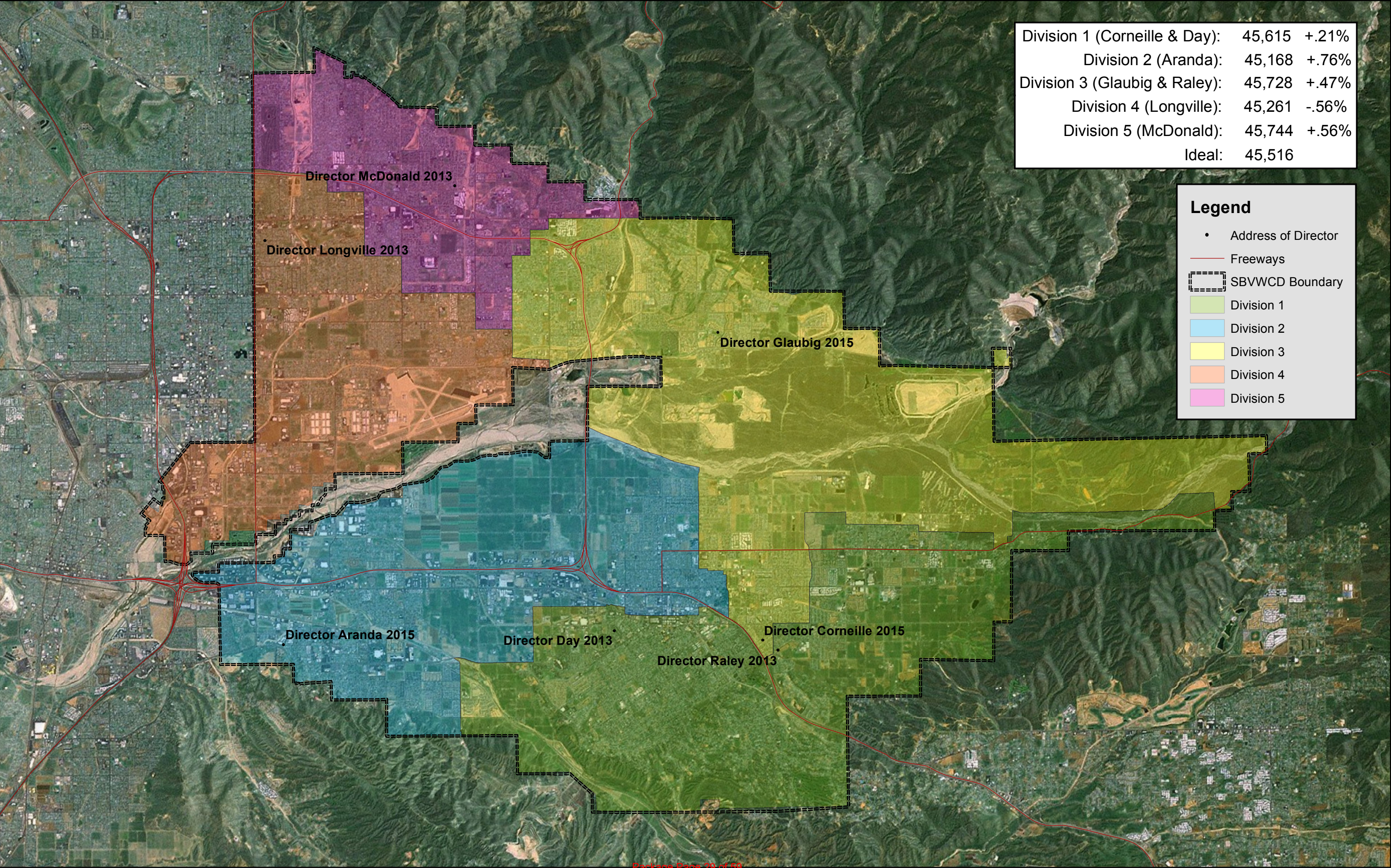
Scenario 1: Potential Water District Division Boundaries



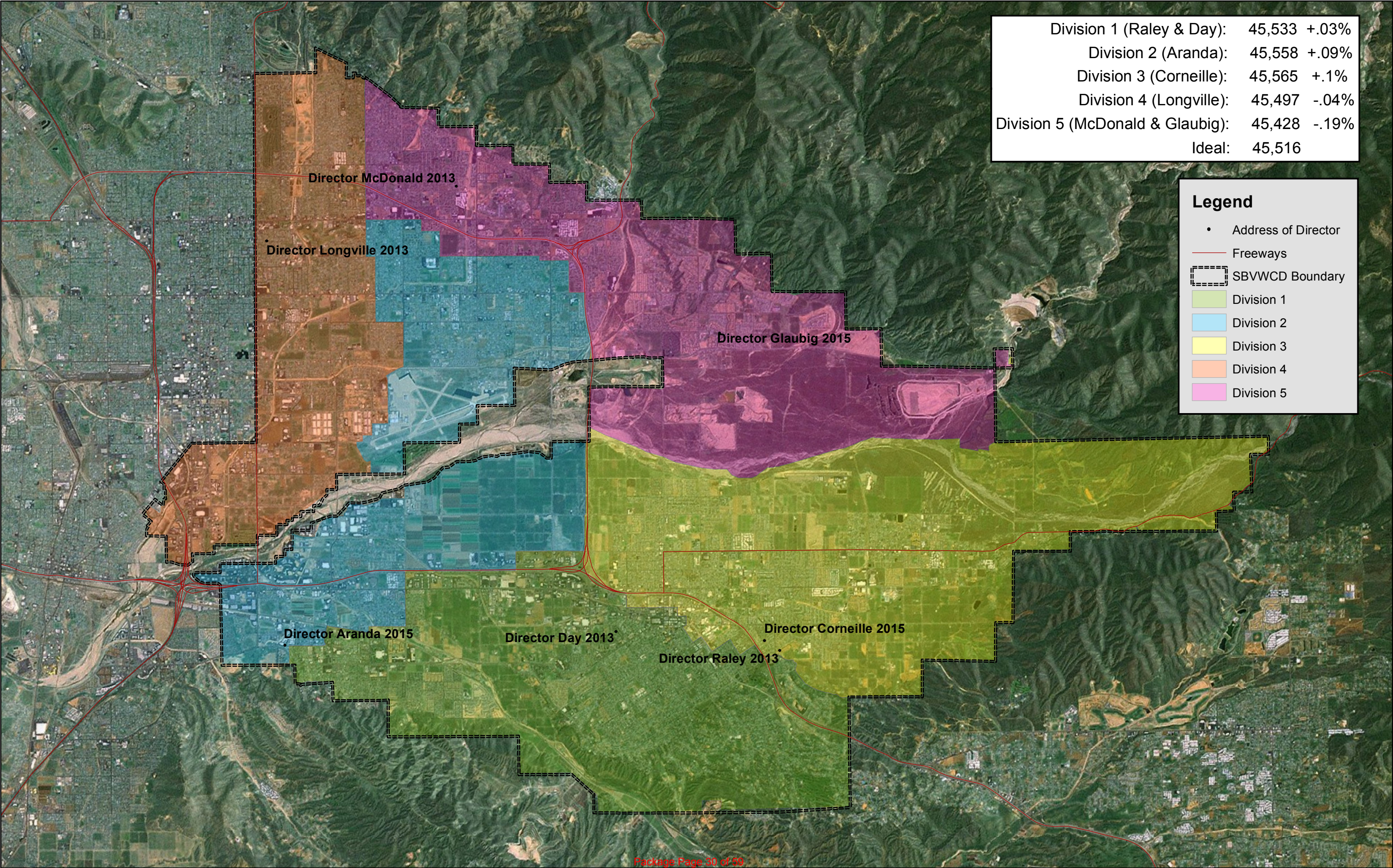
Scenario 2: Potential Water District Division Boundaries



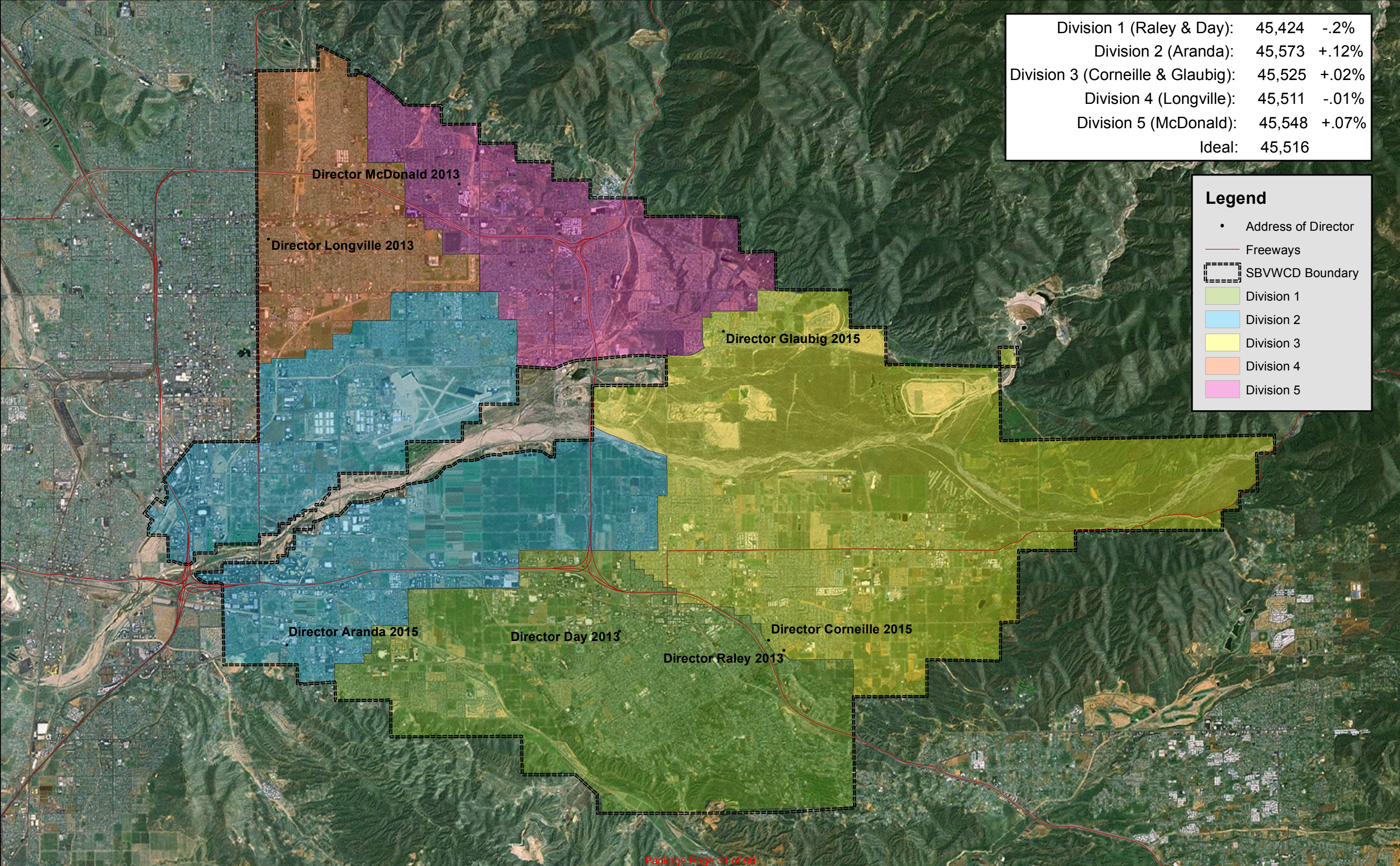
Scenario 3: Potential Water District Division Boundaries



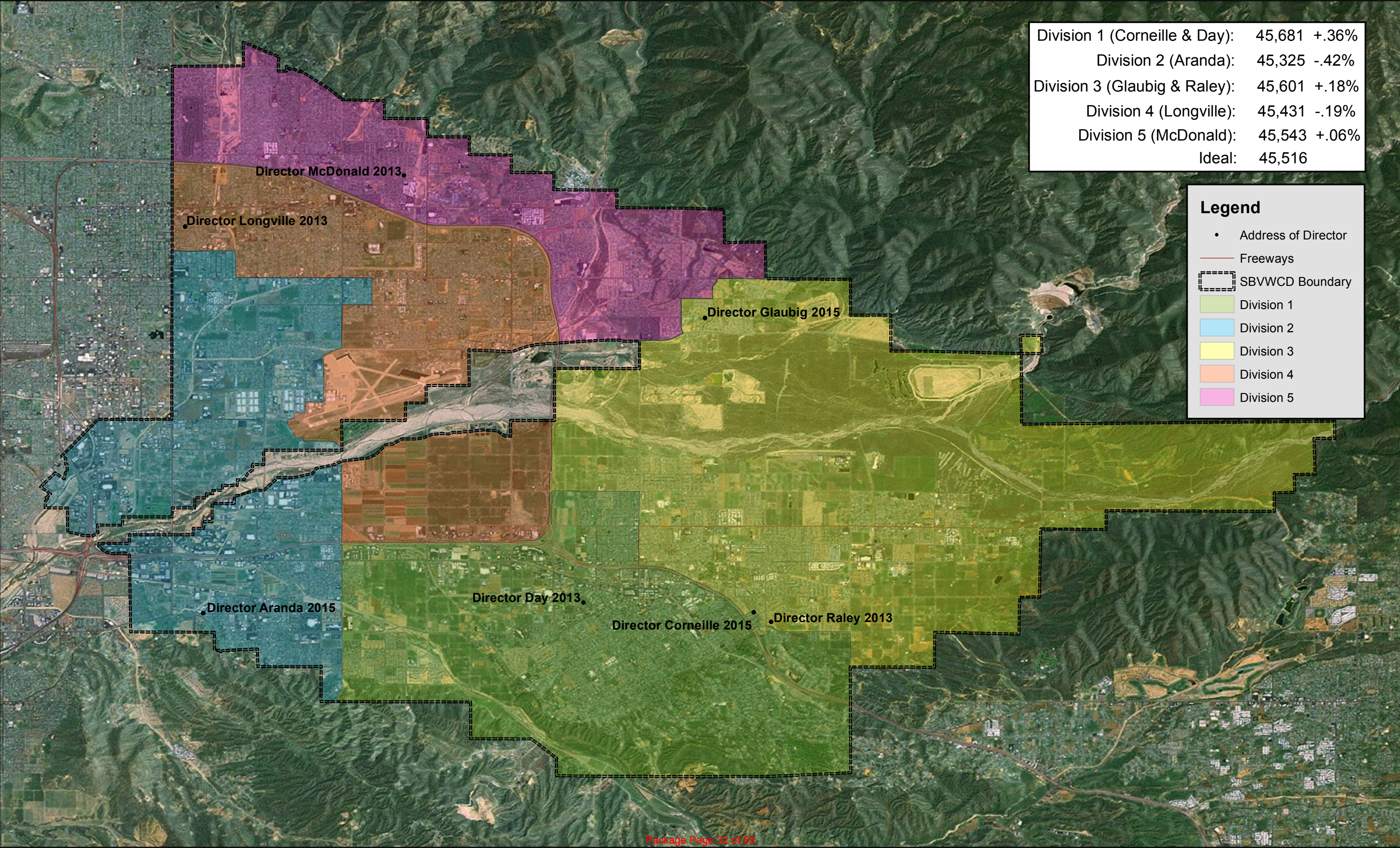
Scenario 4: Potential Water District Division Boundaries



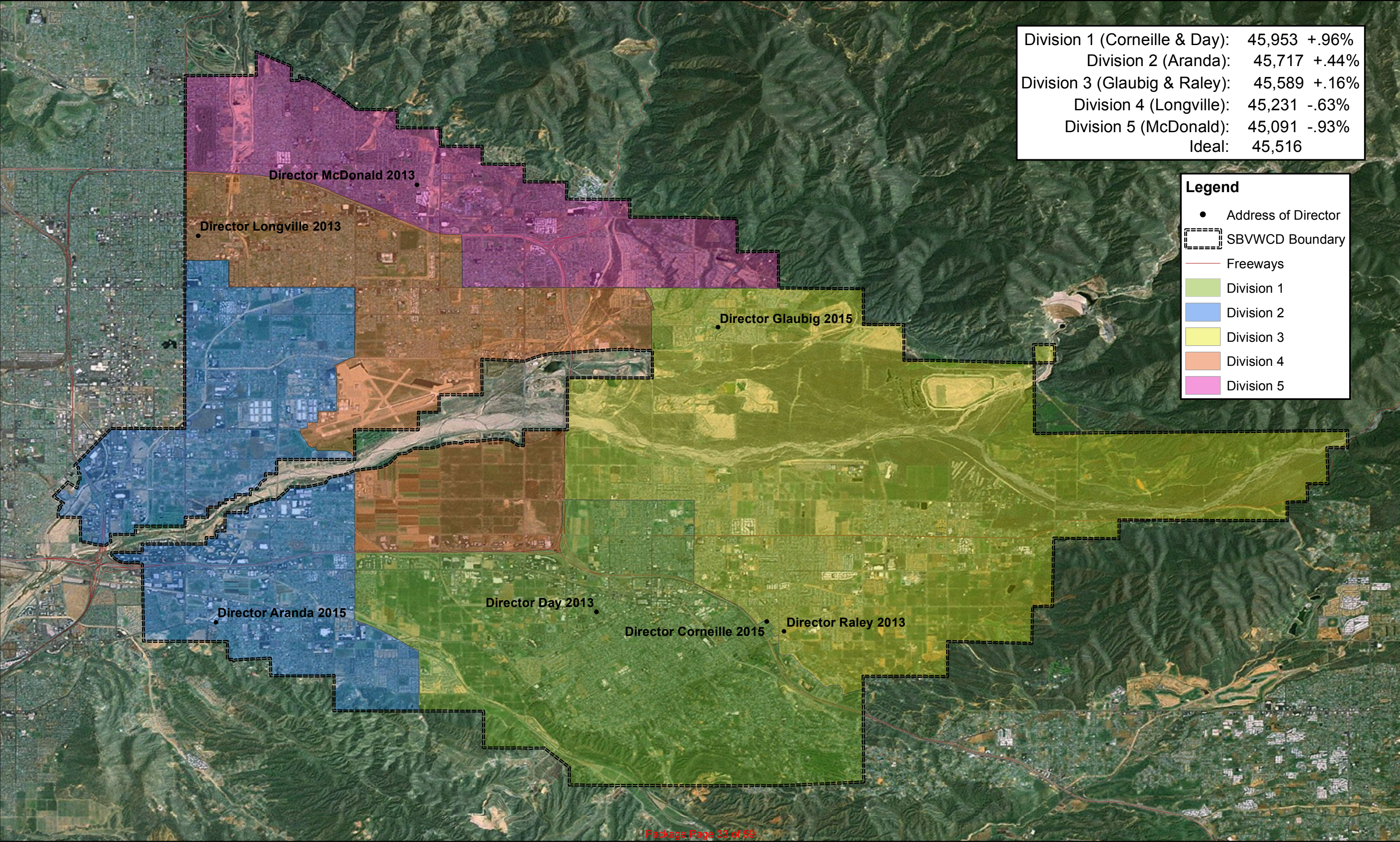
Scenario 5: Potential Water District Division Boundaries



Scenario 6: Potential Water District Division Boundaries



Scenario 7: Potential Water District Division Boundaries





SAN BERNARDINO VALLEY WATER CONSERVATION DISTRICT

Established 1932

1630 West Redlands Boulevard, Suite A
Redlands, CA 92373-8032
(909) 793-2503
Fax: (909) 793-0188

P.O. Box 1839
Redlands, CA 92373-0581
Email: info@sbvwcd.dst.ca.us
www.sbvwd.dst.ca.us

Memorandum No. 1110

To: Board of Directors

From: General Manager, Daniel Cozad

Date: July 25, 2012

Subject: IERCD Outreach Programs

RECOMMENDATION

Staff recommends the Board review and consider proposal for performance of water use efficiency public outreach programs

BACKGROUND

The IERCD has submitted a proposal to the District for *Performance of Water Use Efficiency Public Outreach Programs* which is included in the board packet. In brief, IERCD staff would perform the programs to educate the residents within the District boundaries and include conservation information in other presentations as well. Staff proposes to work with IERCD to review the materials they develop and proceed with not more than 10 programs.

FISCAL IMPACT

The outreach program total is \$100.00 per program. The District will need to add an addendum to the signed proposal which specifies a not to exceed amount of \$1000. The Funding for this effort was included in the approved fiscal year 2012-13 budget.

BOARD
OF
DIRECTORS

Richard W. Corneille
Clare Henry Day

Arnold L. Wright
John Longville

David E. Raley
Melody McDonald
Manuel Aranda, Jr.

GENERAL
MANAGER

Daniel B. Cozad

PROPOSAL FOR PERFORMANCE OF WATER USE EFFICIENCY PUBLIC OUTREACH PROGRAMS

Proposal To:

*San Bernardino Valley Water Conservation District
Contact: Daniel Cozad, General Manager
1630 W. Redlands Blvd, Suite A
Redlands, CA 92373*

Proposal From:

*Inland Empire Resource Conservation District
Contact: Mandy Parkes, District Manager
25864-K Business Center Drive
Redlands, CA 92374*



INLAND EMPIRE RESOURCE CONSERVATION DISTRICT BACKGROUND:

This proposal is being presented to the Board and Staff of the San Bernardino Valley Water Conservation District (SBVWCD), from the Board and Staff of the Inland Empire Resource Conservation District (IERCD). The IERCD is a public agency, headquartered in the City of Redlands and serving the residents of twenty-seven cities and unincorporated areas in San Bernardino and Riverside Counties. The District operates under the principle that the quality of the environment determines the corresponding quality of life; accordingly, IERCD board and staff perform the restoration, conservation, and education and outreach work designed to improve the quality of life for area habitats and dependent environs. Tasks associated with this work include preservation of open space, removal of invasive vegetation and replacement with appropriate native species, and dissemination of conservation information to area students and community groups.

The performance of environmental education programs to a variety of audiences within the District's service area is a key function of the Inland Empire Resource Conservation District. One full-time education coordinator and one part-time education assistant are tasked with the presentation of eight core programs on topics including importance of soil health, the need to reduce, recycle, and reuse, and the function and value of wetlands. All programs are age-appropriate and correlated to the Science Content Standards for California public schools, involve hands-on lessons, and are free to the requesting party. District educators employ a series of visual aids in communicating the core points of each program, including 3D Enviroscape® models, Global Positioning System units for outdoor sessions, and interactive PowerPoint presentations with post-program content quizzes.

Of particular importance in IERCD's environmental education program repertoire is its "Water Use Efficiency" classroom presentation, even more so in consideration of the arid environment combined with the ever-increasing population of the surrounding region. This program provides students with content relating to the water cycle, methods of water storage and delivery both locally and statewide, the role of local conservation agencies and water providers in ensuring continued availability of drinking water, and the critical need for as well as methods of conserving this resource. The IERCD recognizes that student comprehension is key to effect desired behavior change in participants, which has led to development and implementation of pre and post-program content quizzes to determine changes in comprehension of water conservation needs/methods as a result of this program.

STATEMENT OF WORK:

At the request of the San Bernardino Valley Water Conservation District, the IERCD would like to enter into a contract wherein IERCD education staff would perform Water Use Efficiency programs to residents within SBVWCD's service area. IERCD services related to the performance of these programs include:

OUTREACH TO AREA EDUCATORS AND COMMUNITY GROUPS:

IERCD staffers will advertise SBVWCD Water programs through a variety of strategies, including on the IERCD's website, to existing IERCD contacts within SBVWCD's service area, and via direct outreach to educational campuses within SBVWCD's boundaries. Flyers advertising the program with the logos from both entities will be created by IERCD staff using professional software InDesign; once approved by SBVWCD, they will be distributed throughout the educational community in compliance with protocols outlined for advertising.

TOTAL CLASSROOM PROGRAMS TO BE PERFORMED

The number of classrooms to be performed in the 2012-13 fiscal year will not exceed that approved in the annual budget for the SBVWCD. This number shall be specified by the SBVWCD and included as an addendum to this agreement in the updated project budget.

PROGRAM CONTENT DESCRIPTION:

The options for program components depend on participant age and venue; however, all will include a combination of the following materials/activities:

- Water Conservation Enviroscope® model
- Display board with visual aides illustrating SBVWCD function, the water cycle, water capture and storage, State Water Project, IE Garden Friendly program, typical areas of water use, and methods for conservation
- Question wheel
- Water-use quiz
- PowerPoint presentation
- Interactive content test
- Handouts and small water conservation-themed prizes

All requesting parties will receive lesson plans prior to program presentation, where components of the lesson, vocabulary, and applicable standards are detailed. All content and changes of content will be reviewed by SBVWCD staff to obtain feedback before proceeding. Following the program, IERCD educators will provide follow-up content reinforcement packets and will assist interested instructors in accessing portions of the IERCD's websites with additional Water Use Efficiency content.

TRANSPORTATION:

The IERCD educator will provide transportation to and from programs, in a District or personal vehicle. Transportation costs are assumed as part of the overall per-program cost and will not be separately accounted for by IERCD staff.

INVOICING:

IERCD staff will provide detailed quarterly invoices to SBVWCD accounting staff, unless SBVWCD desires submission of invoices as a more or less frequent rate. The invoices will be payable upon review and approval by SBVWCD staff. Each invoice will consist of total number of programs performed within the service area boundary of the SBVWCD and will be billed at a flat rate, regardless of program location. All costs associated with program outreach and advertising will be assumed by the IERCD as part of the per-program cost.

FEE BREAKDOWN:

Task	Description	Approximate Cost
Program Preparation	Assembling materials, Travel, Clean-Up	\$65.00
Presentation	Classroom content portion	\$30.00
Materials	Enviroscape® Materials, Handouts	\$5.00
Per-Program Total		\$100.00

CANCELLATION:

This contract may be cancelled at any time, via the submission of a letter from the terminating agency. Any unpaid program costs will be invoiced and paid within thirty (30) days of cancellation.

IERCD LESSON PLAN: WATER USE EFFICIENCY

Grade Level/Age: kindergarten to first / 5-7 years

Length of program: 30-40 minutes

Materials:

- 3-D Enviroscape® model; Enviroscape accessories
- Interactive character story: "Ricky the Water Drop"
- Water cycle poster
- State water project poster
- Felt board/visual aides; water conservation cards

VOCABULARY AND KEY CONCEPTS

IERCD Educator introduces herself to class and writes program topic on board. She places the board on display in a prominent location at front of room and begins to go over key vocabulary and concepts, using corresponding visual aides for each concept covered:

- Water Conservation
- Natural Resources
- San Bernardino Valley Water Conservation District
- States of water
- Water cycle: evaporation, condensation, infiltration and precipitation
- Ground water
- Spreading Basins
- Drought
- State Water Project
- Permeable surface vs. impermeable surface

STATES OF WATER

- Concepts covered:
 - Differences among states of water, demonstrated to participating students through the use of illustrated cards and the "Ricky the Water Drop" story.
 - **K.1.b:** Students know water can be a liquid or a solid and can be made to change back and forth from one form to the other.
 - **K.1.c:** Students know water left in an open container evaporates but water in a closed container does not.

WATER CYCLE

- Concepts covered:
 - Physical process of water cycle

- **Standard K.1.b:** *Students know water can be a liquid or a solid and can be made to change back and fourth from one to the other.*
- **Standard K.1.c:** *Students know water left in an open container evaporates (goes into the air) but water in a closed container does not.*
- **Standard 1.1.a:** *Students know solids, liquids, and gasses have different properties.*
- **Standard 1.1.b:** *Students know the properties of substances can change when the substances are mixed, cooled, or heated.*
- **Importance of conserving water/drought**
 - **Standard K.3.c:** *Students know how to identify resources from Earth that are used in everyday life and understand that many resources can be conserved.*
- **Sources of water for Inland Empire Residents**
 - **Explain concept of local water provider/sources of local water**
 - Location
 - Function
 - **Explain concept of conservation**
 - **San Bernardino Valley Water Conservation District**
 - Location/Service area
 - Function
 - Role in local water capture/recharge

PLANT USE OF WATER

- **Concepts covered:**
 - **Uptake of water through plant roots/overview of plant-water-sunlight relationship**
 - **1.2.b:** *Students know both plants and animals need water, animals need food, and plants need light.*
 - **1.2.e:** *Students know roots are associated with the intake of water and soil nutrients and green leaves are associated with making food from sunlight.*
 - **1.3.c:** *Students know the sun warms the land air, and water.*

ACTIVITIES/PROGRAM OUTLINE

The educator begins the program with the story, "Ricky the Water Drop" which highlights the various states in which water can be found. Once the Educator has finished the story, she will discuss water conservation cards with students, demonstrating differences between states of water that are found in the story.

Following the story, the educator begins discussing the water cycle. The Educator will then discuss the three sources of water: ground water, surface water, and the State Water Project. The Educator will cover all three sources of water but will focus on ground water.

The Educator will then have the students circle closely around the Enviroscope[®], while explaining purpose of model and accessories used in conjunction with its water conservation message. The educator will then begin the activity which involves the following steps:

- Marking how much water is in the aquifer for later reference/asking students how water is being used in the community
- Educator will then pump water from the well and begin to fill the demonstration cup.
- Once the cup is about $\frac{3}{4}$ full of water, the Educator will then stop pumping water and check where the water line is in the ground water.
- The water line will have dropped and the Educator will point out that this community is in a drought, demonstrated by imbalance between water received and water used.
- Finally, the educator will explain the potential ramifications of this drought, which may be made worse by future lack of rain water.

The program will be wrapped up with an educator-led discussion on student ideas for conserving water in and out of homes.

IERCD LESSON PLAN: WATER USE EFFICIENCY

Grade Level/Age: 2nd-4th / 8-10 years

Length of program: 40-50 minutes

Materials:

- Enviroscope ® and Enviroscope ® parts
- Water cycle poster
- State water project poster
- Water usage cards
- Gallon of water
- Felt board
- Teacher evaluations

VOCABULARY AND KEY CONCEPTS

IERCD Educator introduces herself to class and writes program topic on board. She places the board on display, ensuring visibility of the IERCD and the Water Conservation District logo, and begins to go over key vocabulary and concepts.

- Water Use Efficiency
- Conservation
- Natural Resources
- San Bernardino Valley Water Conservation District

The Educator will also cover the following vocabulary and concepts during the program:

- Water cycle
 - Evaporation, transpiration, condensation, and precipitation
- Aquifer
- Water capture and recharge
 - Spreading Basins
- Drought
- State Water Project
- Clay soil vs. sandy soil
- Drought tolerant plants
- Permeable surface vs. impermeable surface
 - What happens to the rain water when it hits a surface like the asphalt or concrete?

WATER USE EFFICIENCY

- Concepts Covered
 - Water required for a variety of everyday uses, in order to illustrate that the majority of residential water use takes place outside of the home.

PROPERTIES OF SOIL

- **Concepts Covered:**
 - **Soil properties including major soil classifications and soil parent material**
 - **2.3.c:** *Students know that soil is made partly from weathered rock and partly from organic materials and soils differ in color, texture and capacity to retain water, and ability to support of growth of many plants.*
 - **2.3. e:** *Students know rock, water, plants, and soil provide many resources, including food, fuel, and building materials that humans use.*
 - **3.3.c:** *Students know living things cause changes in the environment in which they live: some of these changes are detrimental to the organism or other organisms, and some are beneficial.*
 - **4.3.a:** *Students know ecosystems can be characterized by their living and nonliving components.*

WATER CYCLE

- **Concepts Covered:**
 - **Physical process of water cycle**
 - **3.1.e:** *Students know matter has three forms: solid, liquid, gas.*
 - **3.1.f:** *Students know evaporation and melting are changes that occur when objects are heated.*
 - **Importance of conserving water/drought**
 - **Difference in drinking water and water used for non-consumption purposes**
 - **Sources of water for Inland Empire Residents**
 - **Ground water**
 - **State Water Project**
 - **Surface Water**
 - **Water capture and recharge**
 - **The San Bernardino Valley Water Conservation District**
 - **Location/Service Area**
 - **Function**

PLANTS

- **Concepts Covered:**
 - **Plant structures and use of water**
 - **3.3.a:** *Students know plants and animals have structures that serve different functions in growth, survival, and reproduction.*
 - **Appropriate plants for the Inland Empire Climate**
 - **2.2.c:** *Students know many characteristics of an organism are inherited from the parents. Some characteristics are caused or influenced by the environment.*

GAME AND ACTIVITY

The Educator begins the program with a game. The students estimate how many gallons are used for various activities such as showers, washing the car, and watering the lawn. The purpose of this activity is to ensure that the students understand that the majority of water is used outside of the home and that the least amount of water is used for drinking, compared to all the other activities.

Following this activity, the educator will discuss where their water comes from. The Educator will start by discussing the water cycle. The Educator will then discuss the three sources of water: Aquifer, surface water, and the State Water Project.

The Educator will then have the students stand around the Enviroscope and will explain the model's purpose as a method of demonstrating the relationship between water use, drought, and the need for conservation. The following concepts will be covered:

- Soil permeability (clay vs. sandy soil)
- Stormwater run off/ impermeability of surfaces
- Water usage outdoors/ best practices for reducing outdoor water use

For this activity, the educator will do the following:

- Mark how much water is in the model's aquifer with a marker
- Ask students to consider how much water is being used in the community and for what purposes
- While students are doing this the educator will pump water from the well and begin to fill up the model's cup.
- Once the cup is about $\frac{3}{4}$ full of water, the educator will then stop pumping and check where the water line is in the aquifer.
- The water line will have dropped and the educator will point out that this community is in a drought while also discussing ways in which this will affect the population.

The program will be wrapped up with an educator-led discussion on how to save water at home and at school.

IERCD LESSON PLAN: WATER USE EFFICIENCY

Grade Level/Age: 7th-8th / 12-14 years

Length of program: 45-50 minutes

Materials:

- Enviroscope and Enviroscope parts
- Water cycle poster
- State water project poster
- Water usage cards
- Gallon of water
- Felt board
- Teacher evaluations

VOCABULARY AND KEY CONCEPTS

IERCD Educator introduces herself to class and writes program topic on board. She places the board on display, with the water district logo, board at prominent location at front of room and begins to go over key vocabulary and concepts.

- Water Use Efficiency
- Conservation
- Natural Resources
- San Bernardino Valley Water Conservation District

The Educator will also cover the following vocabulary and concepts during the program:

- Water cycle
 - Evaporation, transpiration, condensation, and precipitation
- Aquifer
- Water capture and recharge
- Drought
- State Water Project
- Clay soil vs. sandy soil
- Drought tolerant plants
- Permeable surface vs. impermeable surface
 - What happens to the rain water when it hits a surface like the asphalt or concrete?

WATER USE

- Concepts Covered
 - Water required for a variety of everyday uses, in order to illustrate that the majority of residential water use takes place outside of the home.

PROPERTIES OF SOIL

- Concepts Covered:
 - Soil properties including major soil classifications and soil parent material

WATER CYCLE

- Concepts covered:
 - Physical process of water cycle
 - 8.5.d: *Students know physical processes include freezing and boiling, in which a material changes form with no chemical reaction.*
 - Importance of conserving water/drought
 - Topography and how it affects water supply
 - 7.4.a: *Students know Earth processes today are similar to those that occurred in the past and slow geologic processes have large cumulative effects over long periods of time.*
 - Difference in drinking water and water used for non-consumption purposes
 - Sources of water for Inland Empire Residents
 - Explain concept of local water provider/sources of water
 - San Bernardino Valley Water Conservation District
 - Location/Service area
 - Function
 - Groundwater

PLANTS

- Concepts covered:
 - Anatomy of plants, including seed, stem, leaves, roots
 - Nutrient Transport
 - 8.6.c.: *Students know that living organisms have many different kinds of molecules, including small ones, such as water and salt and very large ones, such as carbohydrates, fats, proteins, and DNA.*
 - Photosynthesis
 - Appropriate plants for Inland Empire climate
 - Native
 - Drought-tolerant

NATURAL RESOURCES

- Concepts Covered:
 - Natural resource use
 - Riparian systems function and dependent environs

GAME AND ACTIVITY

The Educator begins the program with a game. The students estimate how many gallons are used for various activities such as showers, washing the car, and watering the lawn. The purpose of this activity is to ensure that the students understand that the majority of water is used outside of the home and that the least amount of water is used for drinking, compared to all the other activities.

Following this activity, the educator will discuss where their water comes from. The Educator will start by discussing the water cycle. The Educator will then discuss the three sources of water: Aquifer, surface water, and the State Water Project.

The Educator will then have the students stand around the Enviroscape and will explain its demonstration of relationship between use and drought and need for conservation. The following concepts will be highlighted:

- Soil permeability (clay vs. sandy soil)
- Stormwater run-off and impermeability of surface/topography affect on the amount of water in the ground.
- Water usage outdoors/best practices for conserving outdoor water.

Demonstration:

- The educator will mark how much water is in the aquifer with a marker
- Students will be asked to consider how water is being used in the community, and for which specific purposes
- Educator will pump water from the well and begin to fill up the model cup
- Once the cup is about $\frac{3}{4}$ full of water, the Educator will then stop pumping water and check where the water line is in the aquifer.
- The water line will have dropped and the Educator will point out that this community is in a drought and may not get much rain next winter.
- The Educator will finish the demonstration by dropping "pollution" (food coloring) into the water to explain what happens when ground water sources are polluted.

The program will be wrapped up with a discussion on how to save water at home and at school.



SAN BERNARDINO VALLEY WATER CONSERVATION DISTRICT

Established 1932

1630 West Redlands Boulevard, Suite A
Redlands, CA 92373-8032
(909) 793-2503
Fax: (909) 793-0188

P.O. Box 1839
Redlands, CA 92373-0581
Email: info@sbvwcd.dst.ca.us
www.sbvwd.dst.ca.us

Memorandum No. 1111

To: Board of Directors

From: General Manager, Daniel Cozad

Date: July 25, 2012

Subject: California Special Districts Association (CSDA) 2012 Board Elections-Region 5

RECOMMENDATION

Staff recommends the Board review the candidates for Region 5 and provide direction on voting.

BACKGROUND

The leadership of CSDA is elected from its six geographical regions. Each region has three seats on the Board with staggered 3 year terms. Candidates must be affiliated with an independent special district that is a CSDA member.

At the April 11, 2012 board meeting the Board approved Resolution No. 475 in placing Manny Aranda in nomination of this position.

Board members are expected to attend all board meetings held every other month at CSDA's office in Sacramento, participate in at least one committee and attend two annual events (Special District's Legislative Days (held in the spring and fall). CSDA reimburses directors for their related expenses for Board and Committee meetings. Expenses for the two annual events are not reimbursed by CSDA.

FISCAL IMPACT

District would be responsible for paying expenses for the two annual events. Other regular meeting costs would be paid by CSDA.



**California Special
Districts Association**
Districts Stronger Together



CALIFORNIA SPECIAL DISTRICTS ASSOCIATION

2012 BOARD ELECTIONS – REGION 5

MAIL BALLOT INFORMATION

Regarding the CSDA Board election ballot that was recently mailed to you, there is a correction. Moira Barron is representing the **Meiners Oaks County Water District**, not the Ojai Valley Sanitary District as stated on the ballot. Included is an updated ballot. Please, if you have not mailed in your vote quite yet, send in the new ballot with this revision. We apologize for any inconvenience this may cause. Thank you for your understanding. If you have any questions, please feel free to call.

Please utilize the enclosed return envelope to return the completed ballot. Ballots must be received at the CSDA office at 1112 I Street, Suite 200, Sacramento, CA 95814 by **5:00pm on Friday, August 3, 2012.**

If you do not use the enclosed envelope, please mail in your ballot to:

**California Special Districts Association
Attn: 2012 Board Elections
1112 I Street, Suite 200
Sacramento, CA 95814**

Please contact Charlotte Lowe toll-free at 877.924.CSDA or charlottel@csla.net with any questions.



**California Special
Districts Association**
Districts Stronger Together



CALIFORNIA SPECIAL DISTRICTS ASSOCIATION

2012 BOARD ELECTIONS

MAIL BALLOT INFORMATION

Dear Member:

A mail ballot has been enclosed for your district's use in voting to elect a representative to the CSDA Board of Directors in your Region for Seat A. Each of CSDA's six (6) regional divisions has three seats on the Board. Each of the candidates is either a board member or management-level employee of a member district located in your geographic region. Each Regular Member (district) in good standing shall be entitled to vote for one (1) director to represent its region.

We have enclosed the candidate statements for each candidate who submitted one. Please vote for **only one** candidate to represent your region in Seat A and be sure to sign, date and fill in your member district information (*in some regions, there may only be one candidate*). If any part of the ballot is not complete, the ballot will not be valid and will not be counted.

Please utilize the enclosed return envelope to return the completed ballot. Ballots must be received at the CSDA office at 1112 I Street, Suite 200, Sacramento, CA 95814 by **5:00pm on Friday, August 3, 2012.**

If you do not use the enclosed envelope, please mail in your ballot to:

California Special Districts Association
Attn: 2012 Board Elections
1112 I Street, Suite 200
Sacramento, CA 95814

Please contact Charlotte Lowe toll-free at 877.924.CSDA or charlottel@cstda.net with any questions.

R.J. Kelly
Castaic Lake Water Agency

Candidate Statement
Region 5

I have served on the Board of Castaic Lake Water Agency for nine years. During that time I served as Vice President for four years and President for two years and currently Chair the Finance Committee.

I have been involved in CSDA through my attendance at the annual conferences and seminars for approximately five years. It was during my Presidency that I was awarded the CSDA President of the Year Award. I also completed the Special District Institute programs with both CSDA and SDI.

Through CLWA's membership in ACWA I was on Region 8 and the Finance Committee held in Sacramento.

My background is finance, accounting and tax planning. I am a hard worker and think outside the box. I know that I can commit the time, energy and knowledge to assist the CSDA Board representing Region 5.

I look for your VOTE and support.

Thank you

RJ Kelly

My name is Hugh Rafferty, and I am asking your support in electing me to the Board of Directors of the California Special Districts Association representing Region 5, Seat A.

I serve on the Board of the Santa Maria Public Airport District in Santa Maria, CA. I am the Chairman of the Educational Committee of the Santa Barbara Chapter of CSDA, and serve on both the Educational Committee and the Elections and Bylaws Committee at the State level.

In addition to the above, I currently serve or have served on other boards and committees as follows:

Immediate Past President of the Santa Maria Public Airport District.
Chairman of the Santa Barbara County Taxpayers' Association
Chairman of the Committee to Improve North (Santa Barbara) County
Chairman of Coast Hills Federal Credit Union
Chairman of Leadership Santa Maria Valley, sponsored by the Chamber of Commerce
Chairman of the Allan Hancock Community College District Measure I Bond Oversight Committee
Past Chairman of the Santa Maria Joint Union High School District Measure C Bond Oversight Committee
Member of the Santa Maria Public Airport District Finance Committee
Judge Advocate of Coastal Valleys Detachment 1340, Marine Corps League

I am the recipient of the Phi Delta Kappa Educational Foundation Lay Citizen Award for my work while serving as Chairman of the Santa Maria Joint Union High School District Bond Oversight Committee.

My purpose in running for the CSDA Board is to: first, serve the members of Region 5 by representing their concerns at the State level, and second, work develop programs to bring an increased level of education to members of the Association.

As a retiree, I can devote the time it takes to work with CSDA and other organizations on your behalf.

Thank you for your consideration,

Hugh J. Rafferty
Director, Santa Maria Public Airport District

Candidate Statement of Manuel Aranda, Jr.
San Bernardino Valley Water Conservation District (SBVWCD)

The SBVWCD has been a member of California Special Districts Association (CSDA) for over a decade. I have over the years attended CSDA monthly meetings. I have served on ACWA's various committees, including:

-  Legal Committee
-  Legislative Committee
-  Federal Committee
-  Groundwater Committee
-  Communications Committee (Presently)

I have also served as California's representative for The Western Coalition of Arid States (WESTCAS) for several years. In addition I have over the years on a regular basis presented water issues to local service clubs, churches and schools. I feel that my experience in water permits me to serve on the CSDA Board that would continue to address the concerns of water districts in California.



Dear CSDA Members:

The California Special Districts Association does an incredible job of watching out for all special districts in the State. Their on-going efforts include the offering of educational classes and conferences and the active monitoring of legislative and policy proposals that greatly affect District operations. It is my belief that special districts are the best provider of local services and that is why it would be an honor to serve on the Board of Directors and to assist in promoting the value of special districts and to help continue the great work of the organization. My qualifications include both public and private experience including serving as a Board member on the Rancho Simi Recreation Park District since 2003.

I currently serve as Vice President of the Ventura County Special District's Association ("VCSDA"), as one of the Special District Board Members on the LAFCO Commission, as a member of the California Special District's ("CSDA") Legislative Committee, and as a member of the Santa Monica Mountains Conservancy Advisory Committee. I am also owner of Urban Strategies, a land use and government policy consulting firm, which was recognized as business of the year by the Simi Valley Chamber of Commerce in 2004. I am very proud to have been selected as the 38th Assembly District Woman of the Year for 2002 by State Assemblyman Keith Richman, M.D. and was awarded the Strathearn Lifetime Achievement Award by the Simi Valley Chamber of Commerce. I would very much appreciate the opportunity to serve as a Region 5 Representative on the CSDA Board of Directors and respectfully ask for your vote.

Elaine Freeman
Board Member, Rancho Simi Recreation and Park District

Dear CSDA Colleges,

I serve on the Board of Directors of the Chino Valley Independent Fire District. I am very proud to state that the Fire District is the first fire district to receive the District of Distinction accreditation from the Special Districts Leadership Foundation (SDLF). We became a District of Distinction in 2008. I serve on the CSDA Education Committee and the Membership Committee.

I am a retired Fire Chief with 33 years of Fire Service experience. I have been involved in city, county, JPAs and special districts in various capacities. My commitment to public service and local government is demonstrated by my extensive experience in the public sector. I served as Fire Chief for the Cities of San Marino and Westminster and as a Chief Fire Officer with the Orange County Fire Authority before retiring. I also worked for the cities of California City, Placentia, and Hawthorne. My education has been devoted to the public sector as well. I have a Bachelor of Arts degree in Public Management and I am a graduate of the National Fire Academy as an Executive Fire Officer.

I am committed to legislative advocacy for special districts. I recognize the importance of working together to represent the common interest of all California special districts and the residents that we serve. Special districts provide one of the most effective, efficient, and accountable forms of local service. It is vital that we continue to work together to influence and monitor policy decisions affecting California special districts.

I am committed to work as hard as I can to keep special districts intact. If you would like to speak with me, I can be reached at (909) 816-8396 or by email at johndemonaco@verizon.net

I look forward to your support! Thank you for your consideration.

John DeMonaco

Al Morrisette
Candidate Statement

The CSDA is viable in representing a variety of California Special Districts under one umbrella and weaving the fabric of our current and future needs into a ripstop government fiber.

I have a 40 year entrepreneurial background in the fields of horticulture, restoration, environment, business consulting and journalism. My community based background began in 1996 as an appointed member of the Pinon Hills Municipal Advisory Council, 2003 to the San Bernardino County Zone-L Water Board and in 2008 elected to the Phelan Pinon Hills Community Service District. I have help write legislation, community programs, and seek capital through the public and private sectors as a Grant Writer and Community Liaison. I serve my District as the Chairman of the Government Affairs, Park and Recreation and a variety of Adhoc Committees.

Currently I represent your interest in CSDA on the Membership Committee, Education Committee and the Adhoc LAFCO Committee.

I seek a seat on the Board of Directors to help maintain the balance of the Board, bring fresh ideas and represent our districts. I feel it is vital to maintain regular communication with your district and give our region a strong voice.



General Manager's Report

For June 5, 2012 through July 18, 2012

Daniel B. Cozad

The following report summarizes the efforts and activities during the reporting period.

1. **Water Conservation** – Surface flows to the basins continue at low levels. Most days have flows between 10 and 20 CFS in both Mill Creek and Santa Ana River. Most flows are being used directly by surface water users. Approximately 8,000 AF recharged to date in Santa Ana and approximately 4,500 AF recharged in Mill Creek. Approximately 23 CFS State Project Water is being delivered to surface users but none is being recharged.
2. **Personnel/Administration/Staff** – Staff is preparing, changes to PERS, COLA and annual Reviews in accordance with Board direction. Significant efforts to review and update PERS changes since the changes in PERS systems as well as revisions to records.
3. **Finance/Budget/Audit** – Implementing the Board's approved budget. Revisions to staff duties based on staffing changes and budget. Working with RAMS to closeout FY 2011-2012 and prepare for the audit. Also preparing for the District annual audit. Implementing changes authorized in the Statement of Investment Policy and Treasury Management (Banking) authorized by the Boards recent changes. We expect that when implemented this should provide significant efficiency and reduced costs.
4. **Facilities Maintenance/Aggregate Management** – Significant support for the Resources Committee revisions of the Draft Operational Management Manual. Significant office and field meetings to support potential for Aggregate Management and Borrow Pit Restoration including meetings with USFWS, selected contractor and the Department of Water Resources. Planning for cleaning of 3 basins by field staff and other repairs.
5. **Wash Plan** – Significant Conservation Strategy efforts leading with USFWS, BLM and mining partners for the Wash Plan. The ongoing work responds to the requirements for the project from USFWS without risking a jeopardy opinion. Ongoing technical work with mining partners on an optimum conservation strategy. Also planning for and scheduling of the next Task Force meeting. Staff and consultants completed Decision document for the Board of Directors July meeting. Working to implement Board direction and determine project accounting.
6. **East Branch Extension** – Coordinated with DWR and SBVMWD on plans and needs. Staff support provided for negotiation and preparation of easement needs. Review of draft easement and right of way agreements and provisions.
7. **Collaborative Agreement and Enhanced Recharge Project** – Reviewed environmental documents and coordinated with USFWS as well as SBVMWD and their consultants on

the project and the CEQA Addendum. Collaborative Agreement development is delayed due to legal counsel workloads, court schedules and vacations.

- 8. Property/Redlands Plaza** – Working to renew additional leases. Needed repairs to long term leasee's units underway. Termite treatment, repairs and marketing of Mentone house in July. Coordination with SANBAG and BNSF for issues with homeless on railroad tracks.
- 9. Public Outreach and Legislative** – Coordinated meetings with partners related to Wash Plan and mining, water management and groundwater. Attended Santa Ana Sucker Task Force, Watermaster and BTAC meetings. Coordinating with ongoing activities, City of Highland Greenspot road, EBX-2 Citrus Basin and Pipeline construction planning. Coordinating with County Flood for Highland Easement. Coordinating an agreement with CEMEX and District to benefit SB County Flood control for City of Highland. Prepared and participated in ACWA Regional Meeting on Salt and Nutrient Management Planning. Participated in the SB County Vision meetings for Water in July. Planning for collaborative projects including meeting with EVWD.
- 10. Redistricting** – Prepared revisions to the redistricting plan for five divisions. Prepared map scenario alternatives for Board review and discussion.
- 11. Current Board Action Implementation** – Implementing Board direction on budget and Wash Plan. GMs and Legal Counsels for Districts working on the Collaborative Agreement. Planning and preparation for Retirement Lunch for Randy Carlisle.
- 12. Computer and IS** – Planning website revision and updates when staff is available.
- 13. Future Board Activities** – Expected short term items for consideration
 - a. East Branch Extension Easement Agreement
 - b. Audit Committee meeting
 - c. Collaborative agreement review and joint board meeting
 - d. Strategic Plan Elements – Summer
- 14. District Successes**
 - a. Angie and Athena did an excellent job during June with notices on Groundwater changes and getting caught up on many backlogged activities.
 - b. Manuel and Bill transitioned to a two man crew for the District field activities in July.
 - c. The General Manager had a good vacation and is happy to be home and back at work.

San Bernardino Valley Water Conservation District

Monthly Recharge Report

From: 6/1/2012
To: 6/30/2012



	June				
	Avg Daily Recharge	Monthly Recharge	Recharge YTD	BTAC Max*	% Max
Santa Ana River	10.5	314	7,787	30,000	26%
Mill Creek	2.6	77	4,425	18,000	25%
State Water Project	0.0	0	0	NA	NA
In River Channel Recharge**	3.0	89	817	NA	NA
Total	16	480	13,029	48,000	27%

Values in Acre Feet

*BTAC Revised Max in December 2011

**Monitoring began in Mid-April 2011

*** All Values Based on Water Year Oct-Sep 2012

