

Project	Project (acres)	Project Impacts to KRAT (acres)
Basins and Recharge Canals		
Planned Spreading Basin	148.90	0.45
EVWD Planned Spreading Basin	1.51	0
Existing Recharge Basins	65.09	0.83
Enhanced Recharge Canal	3.06	0
Greenspot Channel Improvements	0.51	0
Subtotal	219.07	1.28
Maintenance Roads		
Roads	28.32	0.66
Subtotal	28.32	0.66
Total	247.39	1.94

Legend

Wash Plan Boundary

Management Areas

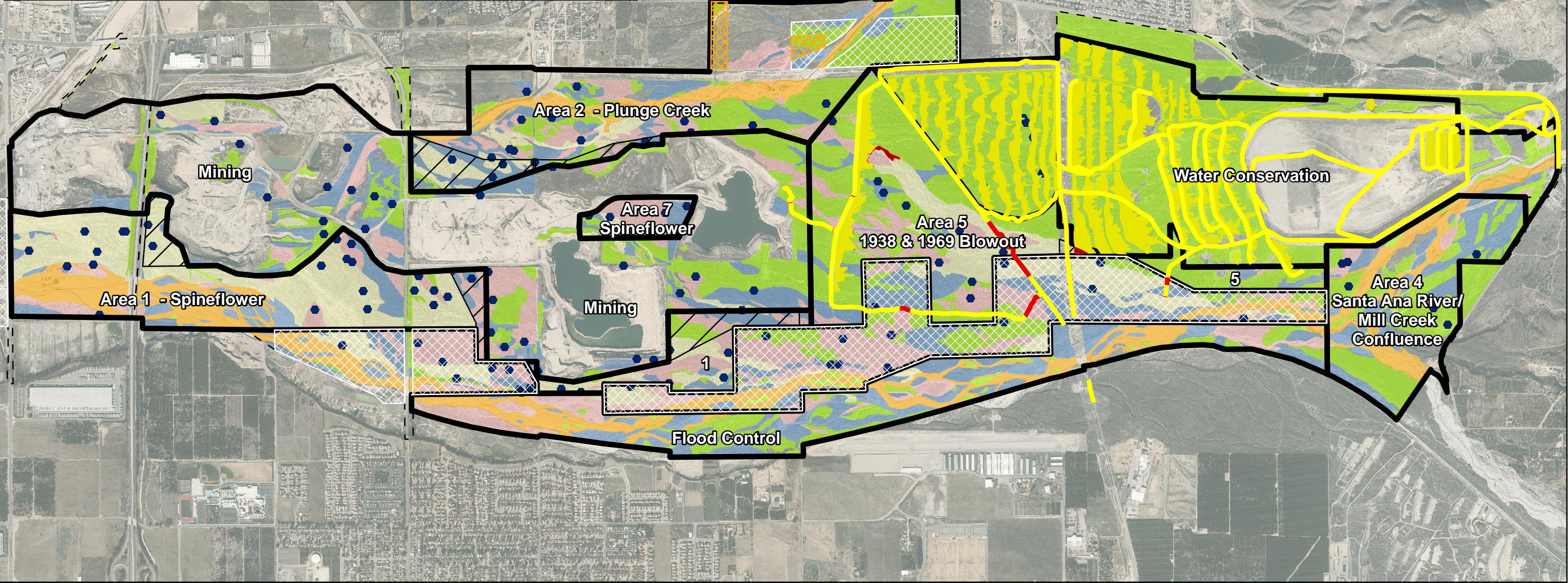
Maintenance Roads

Maintenance Roads - Impacts to KRAT Habitat (Ecological Process Area, High Quality, and Medium Quality)

Basins and Recharge CanalsHighland Mitigation Lands

KRAT Habitat Suitability

Ecological Process Area

High

5/29/2014 1:35:21 PM\\MData\135214\WCD\April 2014\Covered Activities Impacts\KRAT Impacts Water Conservation.mxd





Project	Project (acres)	Project Impacts to Slender-Horned Spineflower (acres)
Basins and Recharge Canals		
Planned Spreading Basin	148.90	1.24
EVWD Planned Spreading Basin	1.51	0
Existing Recharge Basins	65.09	3.47
Enhanced Recharge Canal	3.06	0
Greenspot Channel Improvements	0.51	0
Subtotal	219.07	4.71
Maintenance Roads		
Roads	28.32	2.27
Subtotal	28.32	3.46
Total	247.39	8.17

Legend

Wash Plan Boundary

Management Areas

Maintenance Roads

Maintenance Roads - Impacts to Slender-Horned Spineflower Habitat

Basins and Recharge Canals

Basins and Recharge Canals - Impacts to Slender-Horned Spineflower Habitat

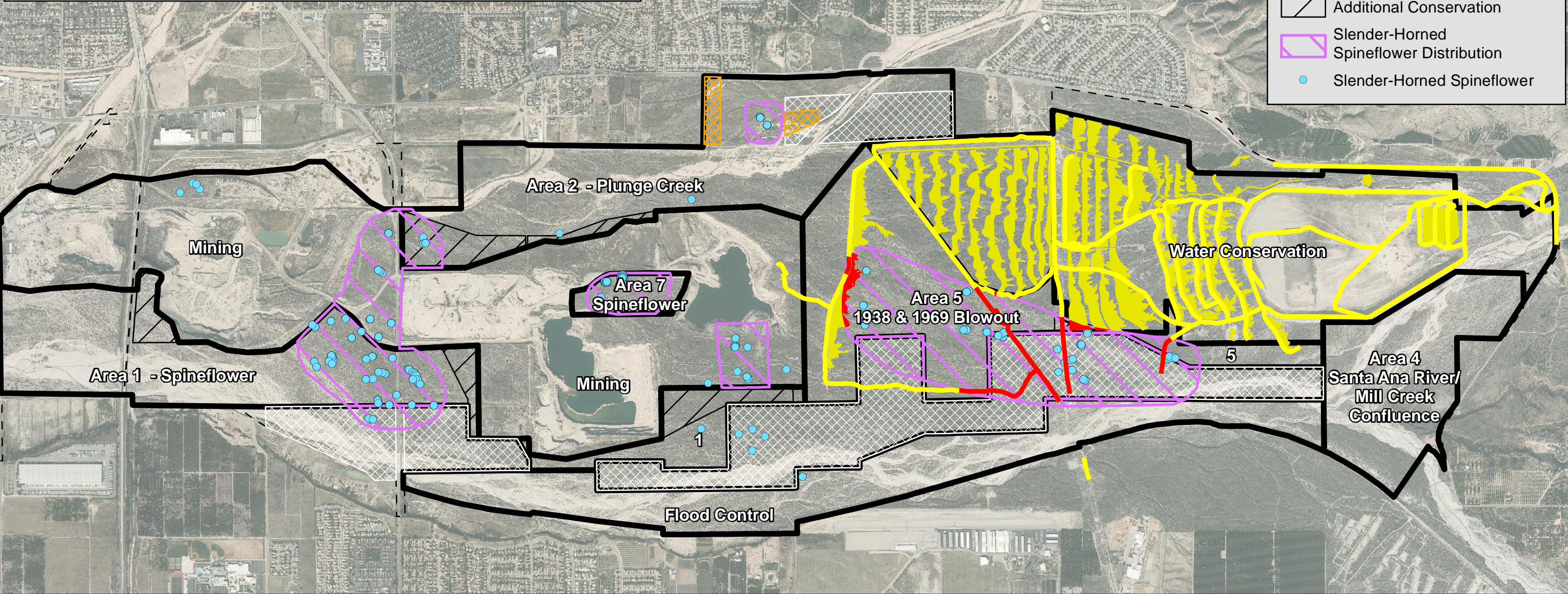
Highland Mitigation Lands

WSPA

Additional Conservation

Slender-Horned Spineflower Distribution

Slender-Horned Spineflower



5/30/2014 J:\M:\Data\135214\MXD\April 2014\Covered Activities Impacts\Spineflower Impacts Water Conservation.mxd



Project	Project (acres)	Project Impacts to Woollystar (acres)
Basins and Recharge Canals		
Planned Spreading Basin	148.90	1.89
EVWD Planned Spreading Basin	1.51	0
Existing Recharge Basins	65.09	14.54
Enhanced Recharge Canal	3.06	0
Greenspot Channel Improvements	0.51	0
Subtotal	219.07	16.43
Maintenance Roads		
Roads	28.32	3.46
Subtotal	28.32	3.46
Total	247.39	19.89

Legend

Wash Plan Boundary

Management Areas

Maintenance Roads

Maintenance Roads - impact to Woollystar Habitat

Basins and Recharge Canals

Basins and Recharge Canals - impacts to Woollystar Habitat

Highland Mitigation Lands

WSPA

Additional Conservation

Woollystar Distribution

Woollystar Occurrence Records

1-25

25-50

>50

Present, number of plants unknown

The map displays the Woollystar habitat impact within the Upper Santa Ana River Wash Plan. It features several management areas outlined in black: Area 1 - Spineflower, Area 2 - Plunge Creek, Area 4 - Santa Ana River/Mill Creek Confluence, Area 5 - 1938 & 1969 Blowout, Area 7 - Spineflower, and Flood Control. The map also shows basins and recharge canals in yellow, maintenance roads in red, and highland mitigation lands in orange. Woollystar occurrence records are indicated by colored dots: light blue for 1-25, medium blue for 25-50, dark blue for >50, and purple for present but unknown counts. The map includes labels for Mining, Water Conservation, and Flood Control. A scale bar at the bottom left indicates distances from 0 to 4,000 feet. The map is overlaid on an aerial photograph of the region.

5/29/2014 J:\MData\135214\MXD\April 2014\Covered Activities Impacts\0 Water Conservation Woollystar.mxd

RBF  
CONSULTING  
A Baker Company

0 1,000 2,000 4,000  
Feet

Source: Eagle Aerial 2012

DRAFT

REVISED HCP UPPER SANTA ANA RIVER WASH PLAN  
Water Conservation - Woollystar Habitat Impact

Exhibit