

APPENDIX A

INITIAL STUDY, NOTICE OF PREPARATION, NOTICE OF PREPARATION RESPONSE LETTERS

**San Bernardino Valley Water Conservation District
Bureau of Land Management, Palm Springs South Coast Field Office**

**NOTICE OF PREPARATION/NOTICE OF INTENT
NOTICE OF PUBLIC SCOPING MEETINGS**

Project Title:

Upper Santa Ana River Wash Land Management and Conservation Habitat Plan

Lead Agencies:

San Bernardino Valley Water Conservation District (Water Conservation District) and Bureau of Land Management, Palm Springs South Coast Field Office (BLM)

Action:

Notice of Preparation (NOP) to prepare an Environmental Impact Report (EIR) for the Upper Santa Ana River Wash Land Management and Conservation Habitat Plan and Notice of Intent (NOI) to prepare an Environmental Impact Statement (EIS) for an amendment to the South Coast Resource Management Plan for the Santa Ana River Area of Critical Environmental Concern. Notice Public Scoping Meetings scheduled to obtain input on EIR/EIS.

Summary:

The project is a multi-faceted, multi-agency, and multi-property owner project which provides for the coordination and accommodation of existing and anticipated future land activities in the Upper Santa Ana River Wash area located in southwestern San Bernardino County. The proposed activities include the expansion of two existing sand and gravel mining operations, the continuation of water conservation facilities, the creation of a habitat conservation area, the continuation of a flood management program, the expansion of public roadways, and the continuation/reservation of a trail system. Additionally, as part of the project, BLM intends to amend the 1994 South Coast Resource Management Plan and analyze alternatives for a proposed land exchange with the Water Conservation District. The proposed action would affect land designated as an Area of Critical Environmental Concern (ACEC) and Research Natural Area (RNA) for protection of Santa Ana River woollystar (*Eriastrum densifolium* ssp. *sanctorum*) and slender-horned spineflower (*Dodecahema leptoceras*).

Project Location:

The project site is located within the Santa Ana River upper wash area, one mile downstream of the Seven Oaks Dam. The project site encompasses approximately 4,330 acres and begins at the mouth of the Santa Ana Canyon at Greenspot Road on the east and extends westward for approximately six miles to Alabama Street. Greenspot Road generally forms the northern boundary of the project site and the south bluffs of the Santa Ana River are generally the southern boundary. The northern portion of the project site is in the City of Highland, the southern portion is in the City of Redlands with a small section within the jurisdiction of the County of San Bernardino. Several parcels within the project site are public lands under the jurisdiction of the BLM.

Alternatives:

The alternatives are: (A) Proposed Action which includes designations of existing and future land use activities including exchange of approximately 508 acres of public lands with restrictive covenants managed by the BLM for Conservation District lands of equal value; (B) Modification of proposed land use designations locating mining activities in other areas and including modification of existing land use designations on specified BLM land to permit mining activities; and (C) No Action Alternative/No Project Alternative (the exchange proposal would be rejected).

Public Involvement:

This notice initiates the public scoping process. Comments on issues and planning criteria may be submitted in writing to the addresses listed below. All public meetings will be announced through the local news media, newspapers, and the Water Conservation District web site (www.sbvwcddst.ca.us) BLM web site (www.ca.blm.gov/palmsprings) at least 15 days prior to the event. In order to ensure local community participation and input, public scoping meetings on the EIR/EIS will be held on **May 12, at 7 p.m. in the City of Highland Council Chambers** located at **27215 Base Line, Highland** and on **May 19, 2004, at 7 p.m. in the City of Redlands Council Chambers** located at **35 Cajon Street, Redlands**. In addition to the ongoing public participation process, formal opportunities for public participation will be provided upon publication of the draft EIR/EIS. Written comments will be accepted and considered throughout the entire planning process and should be sent to one of the following lead agencies.

Points of Contact:

Lead Agencies:

Walter Christensen	Greg Hill
Santa Ana River Wash Project	Santa Ana River Wash Project
SBVWCD	BLM
1630 W. Redlands Blvd., Suite A	690 W. Garnet Ave.
P.O. Box 1839	P.O. Box 581260
Redlands, CA 92373	North Palm Springs, CA 92258
Fax: 909-793-0188	Fax: 760-251-4899
email: wchristensen@sbvwcd.dst.ca.us	email: gchill@ca.blm.gov

Public Responses:

We need to know your views as to the scope and content of the environmental information which should be included in the environmental impact report. If you represent an agency, we are particularly interested in information germane to your statutory responsibilities. Due to the time limits mandated by State law, **your response must be sent at the earliest possible date, but not later than June 11, 2004**. Please send your response to **Walter Christensen or Greg Hill**, at the addresses shown above. Please include the name, phone number, and address of a contact person in your response. Documents pertinent to this proposal, including comments with the names and addresses of respondents, will be available for public review at the SBVWCD and the BLM Palm Springs-South Coast Field Office at the addresses listed above, and may be published as part of the EIR/EIS. Individual respondents may request confidentiality. If you wish to withhold your name or street address from public review or from disclosure under the Freedom of Information Act, you must state this prominently at the beginning of your written comment. Such request will be honored to the extent allowed by law. All submissions from organizations and businesses, and from individuals identifying themselves as representative or officials of organizations or businesses, will be available for public inspection in their entirety.

**Supplementary
Information:**

Preliminary environmental issues identified so far include threatened, endangered, and other special status species, mineral resources, water resources, visual resources, traffic management, recreation, land management, and cultural resources. Attached is the Initial Study and a more detailed project description. The Initial Study with the project description is also available at the following locations:

Norman F. Feldheym Central Library

555 West 6th Street
San Bernardino, CA 92410
909-381-8201

Hours of operation

Monday through Wednesday 10 a.m. – 8 p.m.
Thursday through Saturday 10 a.m. – 6 p.m.

San Bernardino Valley Water Conservation District

1630 West Redlands Blvd., Suite A
P.O. Box 1839
Redlands CA 92373
909-793-2503

Hours of operation

Monday through Friday 8:00 a.m. – 5:00 p.m.

Bureau of Land Management Palm Springs South Coast Field Office

690 W. Garnet Ave.,
P.O. Box 581260
North Palm Springs, CA 92258-1260
760-251-4800

Hours of operation

Monday through Friday 8:00 a.m. – 4:30 p.m.

City of Highland

27215 Baseline
Highland CA, 92346
909-864-8732

Hours of operation

Monday through Friday 8:00 a.m. – 5:00 p.m.

Highland Branch (City of Highland Public Library)

27167 Baseline
Highland Ca. 92346
909-862-8549

Hours of operation

Monday through Wednesday 10:00 a.m. – 8:00 p.m.
Thursday through Friday 10:00 a.m. – 6:00 p.m.
Saturday 9:00 a.m. – 5:00 p.m.
Sunday CLOSED

City of Redlands

35 Cajon Street
Redlands Ca 92373
909-798-7533

Hours of operation

Monday through Thursday 7:30 a.m. – 5:30 p.m.
And Every other Friday

A.K. Smiley Public Library

125 W. Vine Street
Redlands CA 92373
909-798-7565

Hours of operation

Monday and Tuesday 9:00 a.m. – 9:00 p.m.
Wednesday and Thursday 9:00 a.m. – 7:00 p.m.
Friday and Saturday 9:00 a.m. – 5:00 p.m.
Sunday 1:00 p.m. – 5:00 p.m.

Date: 4/22/04

Signature: [Signature]

Larry Liben, General Manager, SBVWCD

Date: 4/22/04

Signature: [Signature]

for Bruce Shaffer, Acting Field Manager, BLM, Palm Springs

ENVIRONMENTAL CHECKLIST FORM

1. Project Title: Upper Santa Ana River Wash Land Management and Habitat Conservation Plan
2. Lead Agency Name and Address:
San Bernardino Valley Water Conservation District
1630 West Redlands Boulevard, Suite A
Redlands, California 92373
3. Contact Person and Phone Number: Walter Christensen (909) 793-2503
4. Project Location: One mile downstream of the Seven Oaks Dam within the alluvial wash of the upper Santa Ana River in southwestern San Bernardino County.
5. Project Sponsor's Name and Address:
Upper Santa Ana River Wash Land Management and Habitat Conservation Plan Task Force
1630 West Redlands Boulevard, Suite A
Redlands, California 92373
6. General Plan Designation: City of Highland, Open Space; City of Redlands, Flood Control/Construction Aggregates Conservation/Habitat Preservation; County of San Bernardino, Floodway.
7. Zoning: City of Highland, Open Space (OS); City of Redlands, Open Land District (O) and Open Space District (EV/OS); County of San Bernardino, Floodway (FW).
8. Description of Project: (Describe the whole action involved, including but not limited to later phases of the project, and any secondary, support, or off-site features necessary for its implementation. Attach additional sheet(s) if necessary.)
See Attached Project Description.
9. Surrounding Land Uses and Setting: (Briefly describe the project's surroundings.)
See Attached Project Description.
10. Other public agencies whose approval is required (e.g., permits, financing approval, or participation agreement):
See Attached Project Description.

ENVIRONMENTAL FACTORS POTENTIALLY AFFECTED:

The environmental factors checked below would be potentially affected by this project, involving at least one impact that is a "Potentially Significant Impact" as indicated by the checklist on the following pages.

- | | | |
|--|--------------------------------------|----------------------------|
| ■ Aesthetics | ■ Agriculture Resources | ■ Air Quality |
| ■ Biological Resources | ■ Cultural Resources | ■ Geology / Soils |
| ■ Hazards & Hazardous Materials | ■ Hydrology / Water Quality | ■ Land Use / Planning |
| ■ Mineral Resources | ■ Noise | ■ Population / Housing |
| <input type="checkbox"/> Public Services | ■ Recreation | ■ Transportation / Traffic |
| ■ Utilities / Service Systems | ■ Mandatory Findings of Significance | |

DETERMINATION (To be completed by the Lead Agency):

On the basis of this initial evaluation:

- ☐ I find that the proposed project COULD NOT have a significant effect on the environment, and a NEGATIVE DECLARATION will be prepared.
- ☐ I find that although the proposed project could have a significant effect on the environment, there will not be a significant effect in this case because revisions in the project have been made by or agreed to by the project proponent. A MITIGATED NEGATIVE DECLARATION will be prepared.
- ☒ I find that the proposed project MAY have a significant effect on the environment, and an ENVIRONMENTAL IMPACT REPORT is required.
- ☐ I find that the proposed project MAY have a "potentially significant" or "potentially significant unless mitigated" impact on the environment, but at least one effect 1) has been adequately analyzed in an earlier document pursuant to applicable legal standards, and 2) has been addressed by mitigation measures based on the earlier analysis as described on attached sheets. An ENVIRONMENTAL IMPACT REPORT is required, but it must analyze only the effects that remain to be addressed.

- ☐ I find that although the proposed project could have a significant effect on the environment, because all potentially significant effects (a) have been analyzed adequately in an earlier EIR or NEGATIVE DECLARATION pursuant to applicable standards, and (b) have been avoided or mitigated pursuant to that earlier EIR or NEGATIVE DECLARATION, including revisions or mitigation measures that are imposed upon the proposed project, nothing further is required.

Signature 

Date 7/21/04

Lawrence M. Libeu
Printed Name

San Bernardino Valley Water Conservation District
For

EVALUATION OF ENVIRONMENTAL IMPACTS:

- 1) A brief explanation is required for all answers except "No Impact" answers that are adequately supported by the information sources a lead agency cites in the parentheses following each question. A "No Impact" answer is adequately supported if the referenced information sources show that the impact simply does not apply to projects like the one involved (e.g., the project falls outside a fault rupture zone). A "No Impact" answer should be explained where it is based on project-specific factors as well as general standards (e.g., the project will not expose sensitive receptors to pollutants, based on a project-specific screening analysis).
- 2) All answers must take account of the whole action involved, including off-site as well as on-site, cumulative as well as project-level, indirect as well as direct, and construction as well as operational impacts.
- 3) Once the lead agency has determined that a particular physical impact may occur, then the checklist answers must indicate whether the impact is potentially significant, less than significant with mitigation, or less than significant. "Potentially Significant Impact" is appropriate if there is substantial evidence that an effect is significant. If there are one or more "Potentially Significant Impact" entries when the determination is made, an EIR is required.

- 4) “Negative Declaration: Less Than Significant With Mitigation Incorporated” applies where the incorporation of mitigation measures has reduced an effect from “Potentially Significant Impact” to a “Less than Significant Impact.” The lead agency must describe the mitigation measures, and briefly explain how they reduce the effect to a less than significant level (mitigation measures from Section XVII, “Earlier Analyses,” may be cross-referenced).
- 5) Earlier analyses may be used where, pursuant to the tiering, program EIR, or other CEQA process, an effect has been adequately analyzed in an earlier EIR or negative declaration. Section 15063(c)(3)(D). In this case, a brief discussion should identify the following:
 - a) Earlier Analyses Used. Identify and state where they are available for review.
 - b) Impacts Adequately Addressed. Identify which effects from the above checklist were within the scope of and adequately analyzed in an earlier document pursuant to applicable legal standards, and state whether such effects were addressed by mitigation measures based on the earlier analysis.
 - c) Mitigation Measures. For effects that are “Less than Significant with Mitigation Measures Incorporated,” describe the mitigation measures, which were incorporated or refined from the earlier document and the extent to which they address site-specific conditions for the project.
- 6) Lead agencies are encouraged to incorporate into the checklist references to information sources for potential impacts (e.g., general plans, zoning ordinances). Reference to a previously prepared or outside document should, where appropriate, include a reference to the page or pages where the statement is substantiated.
- 7) Supporting Information Sources. A source list should be attached and other sources used or individuals contacted should be cited in the discussion.
- 8) This is only a suggested form, and lead agencies are free to use different formats; however, lead agencies should normally address the questions from this checklist that are relevant to a project’s environmental effects in whatever format is selected.
- 9) The explanation of each issue should identify:
 - a) The significance criteria or threshold, if any, used to evaluate each question; and
 - b) The mitigation measure identified, if any, to reduce the impact to less than significance.

UPPER SANTA ANA RIVER WASH LAND MANAGEMENT AND HABITAT CONSERVATION PLAN

GENERAL DESCRIPTION

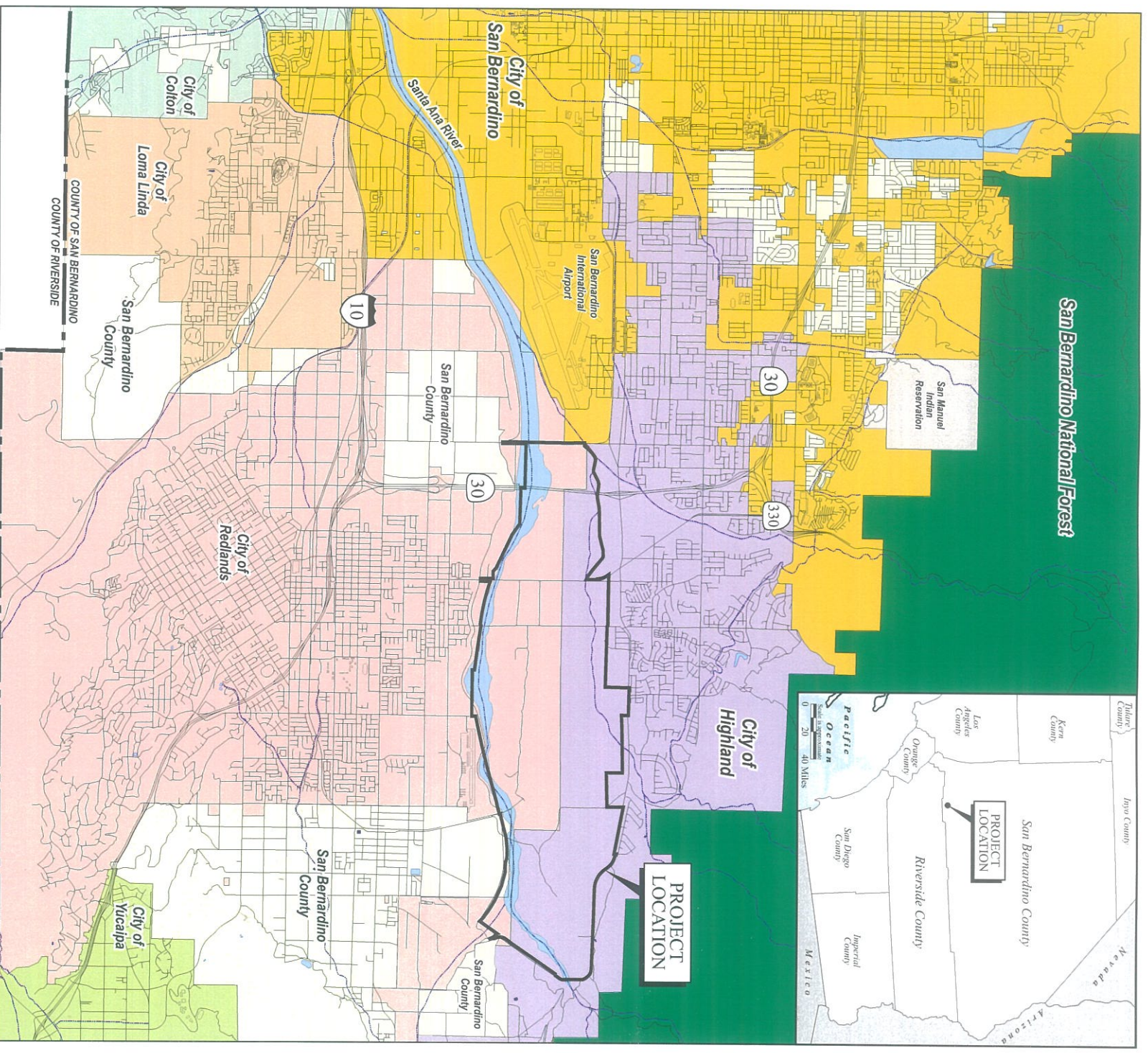
The proposed project is a Land Management, Mining and Reclamation, and Habitat Conservation Plan (Plan) for the Upper Santa Ana River Wash area. The Plan is a multi-faceted, multi-agency, and multi-property owner project consisting of seven main components:

1. The expansion of two existing sand and gravel mining operations, and the approval of reclamation plans for the closure of the facilities following extraction activities;
2. The continuation and expansion of existing water conservation facilities, which also provide for flood management and habitat conservation;
3. The creation of a habitat conservation area which includes water conservation and an existing habitat preservation area;
4. The continuation of a flood management program related to the Santa Ana River and its tributaries;
5. The continuation and, in some cases, the expansion of utilities, roadways, water supply corridors, and facilities;
6. The exchange of public land under the jurisdiction of the Bureau of Land Management (BLM) with land owned by the San Bernardino Valley Water Conservation District; and
7. The continuation of existing trails and the construction/reservation of new hiking, bicycling, and equestrian trails.

The Plan provides for the coordination and accommodation of existing and anticipated future activities in the Wash Planning Area. The final approved Plan, its associated actions and permits, and the related environmental review documentation will provide the necessary information for jurisdictional approvals and other discretionary actions for the described activities to proceed.

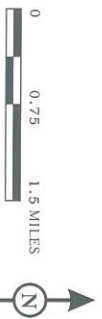
REGIONAL, LOCAL SETTING AND SURROUNDING LAND USES

The Wash Planning Area is located within the Santa Ana River upper wash area in southwestern San Bernardino County (Figure 1). The project area is located one mile downstream of the Seven Oaks Dam within the alluvial fan of the upper Santa Ana River. The project site encompasses approximately 4,330 acres and begins at the mouth of the Santa Ana Canyon at Greenspot Road on the east, and extends westward for approximately six miles to Alabama Street. Greenspot Road generally forms the northern boundary of the project site and the south bluffs of the Santa Ana River are generally the southern boundary. Several jurisdictions cover the land use in the area. The northern portion of the Wash Planning Area is in the City of Highland and the southern portion is in the City of Redlands, with a small southeastern section within the jurisdiction of the County of San Bernardino. In addition, several parcels within the Wash Planning Area are public lands under the jurisdiction of the BLM.



LSA

 SANTA ANA RIVER WASH PLAN BOUNDARY



BASE MAP SOURCE: THOMAS BROS. MAPS, 2002.

R:\SBW\330\Graphics\ScopingMeetingNotice\location.cdr (4/20/04)

FIGURE 1

Upper Santa Ana River Wash
 Land Management and Habitat
 Conservation Plan EIR/EIS
 Regional and Local Setting

The Wash Planning Area is generally bounded by urban uses and vacant land on the north, by urban and agricultural uses plus vacant land on the south, by the San Bernardino International Airport on the west, and by agricultural uses and the San Bernardino Mountains to the east. Other adjacent or nearby uses include the Redlands Municipal Airport to the south, and the Redlands wastewater treatment and adjacent municipal landfill to the southwest.

PROJECT CHARACTERISTICS

The Plan designates specific areas within the Wash Planning Area for existing and future uses. These uses have been grouped into four interrelated categories. The areas designated for these uses are shown in Figure 2 and the acreage is tabulated in Table A.

Table A - Wash Planning Area Land Management Designations

Designation	Estimated Acres
Aggregate Mining (End Use Potentially Recreation and/or Open Space)	1,158
Habitat Conservation including Santa Ana River Woollystar Preservation Area	1,965
Water Conservation (groundwater recharge)	820
Flood Control	387
Total Area	4,330

The proposed uses and activities for each land designation are discussed in the following text. In addition, three related components of the Land Management Plan – Utilities/Circulation, Land Transfer, and Recreation – are also discussed.

Aggregate Mining

The approximately 1,158 acres of land designated for aggregate mining operations in the Wash Planning Area are generally located in the western portion of the area from Alabama Street to about the center of the project area (Figure 2). The aggregate mining area is designated for the continued and expanded extraction of sand and gravel. Cemex and Robertson's Ready Mix (Robertson's) are the mining companies currently operating aggregate extraction and processing facilities in the Wash Planning Area. Under the proposed Plan, the quarry areas proposed to be operated by Cemex are the Alabama Street Quarry, the West Quarry, and the East Quarry North. The combined area of these quarries equals 676 acres; 255 acres within the City of Highland and 421 acres within the City of Redlands. The Plunge Creek Quarry, the Silt Pond Quarry, and the East Quarry South are to be operated by Robertson's and total 162.3 acres within the City of Highland and 319.3 acres within the City of Redlands with a grand total of 481.6 acres. Overall, the combined area of the two mining companies equals approximately 740 acres within the City of Redlands and approximately 418 acres within the City of Highland. The entire planned aggregate mining area within the Land Management Plan of the Wash Planning Area equals approximately 1,158 acres. Maximum production of the aggregate processing plants will be 3 million tons per year for both Cemex and Robertson's, with a combined total of 6 million tons.

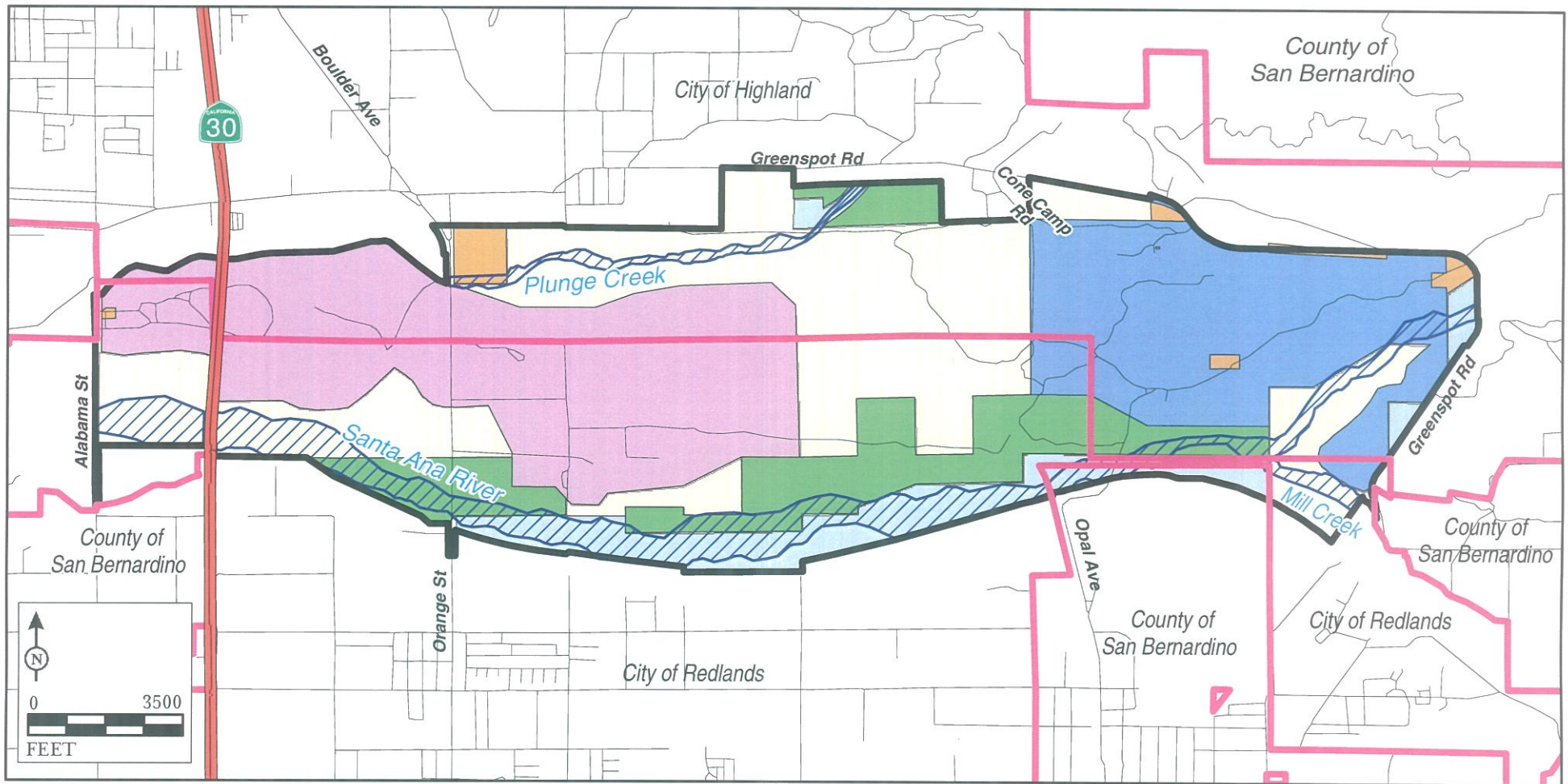


FIGURE 2

LSA

- UPPER SANTA ANA WASH LAND MANAGEMENT AREA
- JURISDICTIONAL BOUNDARY
- WATER CONSERVATION
- HABITAT
- WOOLLY STAR PRESERVE
- FLOOD CONTROL
- AGGREGATE MINING
- AREA NOT A PART
- MANAGED FLOOD CONTROL AREAS, CHANNEL
LOCATIONS ARE REPRESENTATIONAL (SECONDARY USE)

Upper Santa Ana River Wash Land Management
and Habitat Conservation Plan EIR/EIS

Proposed Land Uses

Habitat Conservation with Santa Ana River Woollystar Preservation

The Habitat Conservation Area covers about 1,965 acres of the Wash Planning Area and incorporates the existing Santa Ana River woollystar (*Eriastrum densifolium* ssp. *sanctorum*) preservation area, which was established as part of the mitigation for the construction of the Seven Oaks Dam. The Habitat Conservation Plan (HCP) is designed to monitor, minimize, and mitigate potential effects caused by the Land Management and Conservation Plan to listed species and critical habitat. The HCP will contain areas established for habitat preservation only, habitat with water conservation activities with minimal land disturbances, flood control activities with habitat, and water conservation with habitat conservation. The HCP must provide assurance that the issuance of the Incidental Take Permit for mining operations and other Land Management and Conservation Plan operations will not appreciably reduce the likelihood of the survival and recovery of the species of concern in the wild.

Water Conservation

The primary focus of this area of the Plan, which contains approximately 820 acres, is water conservation. Reconstruction of a canal located along the southern perimeter of the existing Seven Oaks Dam Borrow site is included as part of the Wash Planning Area projects. The Conservation District also performs occasional maintenance of its facilities, as such maintenance becomes necessary. This activity will continue under the Wash Plan and includes maintenance on canals, access roads, culverts, dikes and basins.

Flood Control

The Wash Planning Area encompasses a portion of the Santa Ana River, Plunge Creek, City Creek, and Mill Creek. These active flow channels are administered by the San Bernardino County Flood Control District (SBCFCD) which manages and owns approximately 387 acres of land in and around the Santa Ana River Channel in the planning area. In order to maintain flood control facilities and ensure safe water flows, maintenance and construction is necessary on an ongoing basis around all of the creeks and rivers in the Wash area. The maintenance of the flood control facilities requires access roadways which are located on top of the levees. These roadways will continue within the Wash planning area and be maintained by the SBCFCD.

Utilities/Water Service and Circulation Component

Utilities/Water Service. Uses proposed in the Wash Planning Area include the retention of existing utility and water corridors and related service roads. The existing energy easement which traverses the Wash Planning Area on a general alignment with the extension of Judson Street in Redlands may need to be relocated around the planned mining quarries.

Circulation, Private Roadways. The Wash Planning Area contains both a private and a public circulation system to serve the various uses. These roadways are an integral part of the management plan. Cemex and Robertson's maintain private haul roads on about 19 acres for off-road mining trucks. In order to access the various percolation basins and canals, the Conservation District maintains a network of private roadways. The SBCFCD maintains private roadways on top of the levees to maintain flood control facilities. All of these private roadways are to remain in place except

for the private haul roads of the mining companies. At the closure of each quarry, the roads no longer necessary for mining operations will be abandoned and returned to their natural state.

Circulation, Public Roadways

Greenspot Road Widening and New Bridge. A portion of the northern and eastern boundary of the Wash Planning Area includes Greenspot Road and bridge located in the City of Highland. At the Santa Ana River crossing, a new Greenspot Road bridge will be built. The new bridge is anticipated to be built approximately 250 feet west (downstream) of the existing bridge. The two-lane new bridge project will include realignment of a total of 3,560 feet of Greenspot Road on both sides of the bridge to match the location of the new bridge. The existing curve on Greenspot Road northerly of the new bridge will be smoothed to accommodate a design speed of 65 mph. The existing “S” curve on Greenspot Road just east of Tract 14326 will also be smoothed to accommodate a design speed of 65 mph.

Alabama Street Widening. The centerline of Alabama Street forms the western boundary of the Wash Planning Area. Widening of this roadway to its ultimate width in the City of Redlands is included in the Plan. The southern boundary of the project area on Alabama Street is approximately 1600 feet south of the bridge crossing over the Santa Ana River. From the northern limits of this bridge crossing to the northern Redlands City limits, Alabama Street will be widened to an ultimate 132-foot right-of-way with 24-foot-wide slope easements.

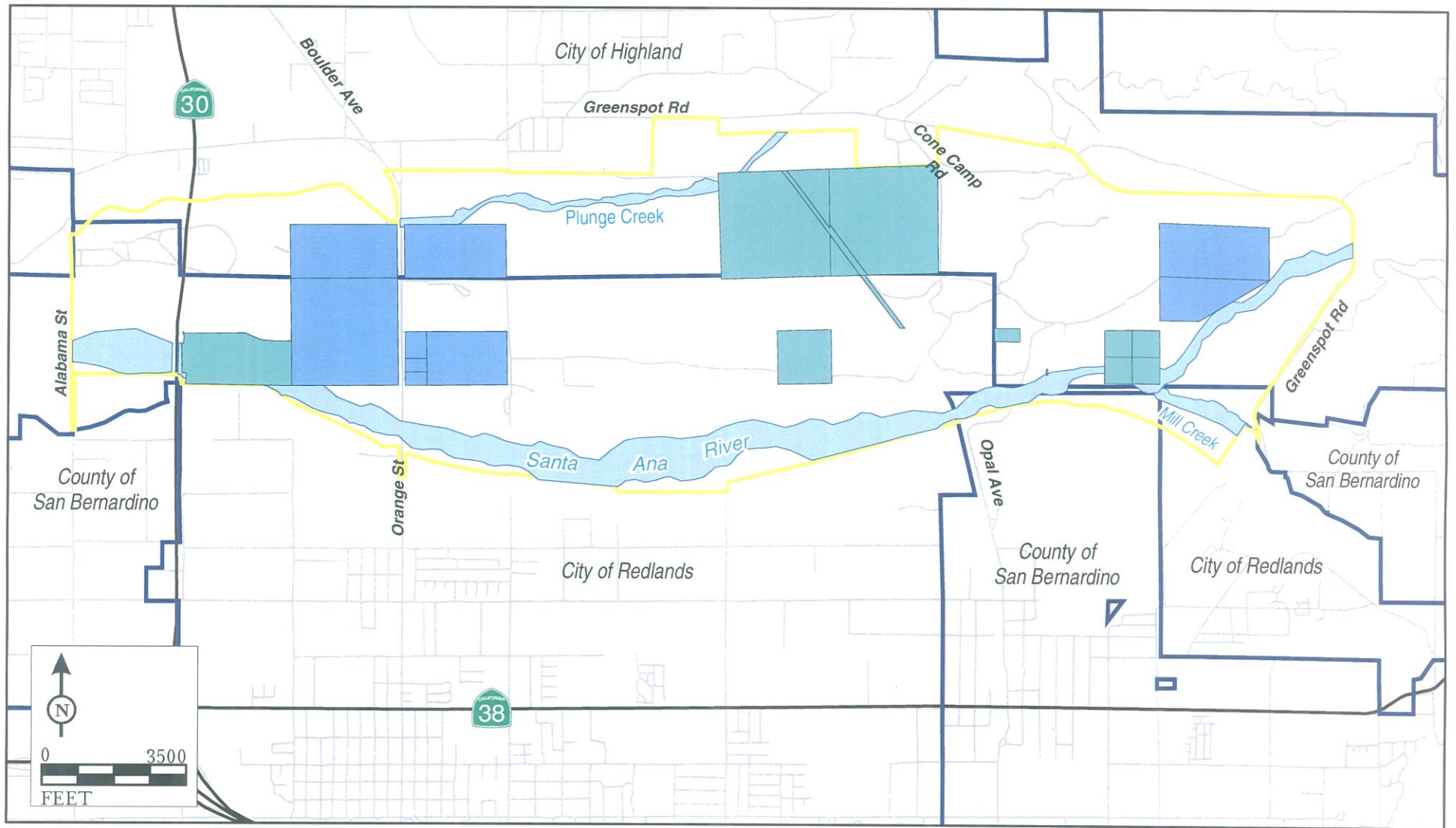
Orange Street Widening. Orange Street traverses the Wash Planning Area in a north-south direction and passes through both the Cities of Highland and Redlands. Widening this roadway to ultimate build-out width is included in the Plan. In Highland ultimate street improvements will include a 64-foot curb separation, curb and gutter, 6-foot sidewalk, and graded shoulder. In the City of Redlands, Orange Street build out will require an 88-foot right-of-way with a slope easement on the western side of the right-of-way in the wash area. The street will also be widened to two lanes in both directions for approximately 1,000 feet south of the Orange Street Bridge.

Land Transfer

In order for the Plan to be implemented, a land exchange between the Conservation District and the BLM must occur. It is understood that public land under the jurisdiction of the BLM will be exchanged with lands owned by the Conservation District at a ratio or value per acre to be determined mostly by the value of the lands' aggregate resources. The final selection of parcels to be exchanged depends on the assessed values of the parcels and the approval of Congress. The parcels under consideration are shown in Figure 3 and will be addressed in the EIS/EIR.

Recreation

The Cities of Highland and Redlands both envision the Wash Planning Area as a source of recreational uses both now with the establishment of the habitat preservation and conservation areas, and in the future with the closing of the mining operations. San Bernardino County has also indicated support for recreational uses, particularly trails. The future planned trails and recreational uses are described below.



LSA

FIGURE 3

- UPPER SANTA ANA WASH LAND MANAGEMENT AREA
- JURISDICTIONAL BOUNDARY
- LAND TRANSFER PARCELS**
 - PUBLIC LANDS UNDER THE JURISDICTION OF THE BUREAU OF LAND MANAGEMENT CONSIDERED FOR EXCHANGE
 - SAN BERNARDINO VALLEY WATER CONSERVATION DISTRICT PARCELS CONSIDERED FOR EXCHANGE

Upper Santa Ana River Wash Land Management and Habitat Conservation Plan EIR/EIS
Land Transfer Parcels

Trails. As part of the Land Use Plan, six interconnecting trails are proposed. These trails include four generally north-south trails and two east-west trails. The trails will ultimately interconnect with one another and provide access to the Cone Camp Staging area to be located in the northeast quadrant of the Wash Planning Area

Future Recreational Uses. As the mining pits are reclaimed, future uses for the areas may include several potential recreational activities. These include an off-road vehicle park, fishing lake, or a possible regional park, which could include various active recreational uses such as soccer, baseball, golf course/driving range, rifle range, recreational vehicle park, and other active and passive recreational uses. The actual recreational uses cannot be specified at this stage of the plan as the mining uses will continue for over 50 years, and the specific recreational needs may change by that point; however, for purposes of analyzing potential environmental effects of such uses as they are part of the reclamation plan, a regional park providing active and passive uses and an off-road vehicle park will be addressed in the EIR/EIS as the assumed recreational uses.

PROJECT APPROVAL REQUIRED BY OTHER PUBLIC AGENCIES

Implementation of the Land Management Plan for the Santa Ana River Wash requires obtaining land use approvals and various permits from several agencies. In addition, an EIR/EIS must be prepared in compliance with CEQA and NEPA. The approvals/permits sought under the Plan are shown in Table B.

Table B – Responsible and Permitting Agencies

Agency	Review/Permit
Federal	
Bureau of Land Management	Land Transfer Approval Amend Resource Management Plan Approve EIS (Record of Decision) ✓ Authorize right-of-way for Orange Street Authorize water conservation facilities
Fish and Wildlife Service	Endangered Species Act Review/Permit (Section 7 and 10a).
Army Corps of Engineers	404 Permit
State of California	
Regional Water Quality Control Board	National Pollutant Discharge Elimination System Permits (NPDES)
Department of Fish and Game	California Endangered Species Act Review (Section 2081) 1602 Streambed Alteration
Regional	
San Bernardino Valley Water Conservation District	Certify EIR Approve of HCP Implementation Agreement
East Valley Water District	Review Wash Plan for compatibility with Water Master Plan Approve HCP Implementation Agreement
County of San Bernardino	
County Board of Supervisors	Approve HCP Implementation Agreement
San Bernardino County	Review for compatibility with SBCFCD Plans and Policies

Table B – Responsible and Permitting Agencies

Agency	Review/Permit
Flood Control District	Approve HCP Implementation Agreement
Cities	
City Council of the City of Highland	Consider Conditional Use Permit for Mining Operations and Reclamation Plan Approve HCP Implementation Agreement General Plan Amendment
City Council of the City of Redlands	Consider Conditional Use Permit for Mining Operations and Reclamation Plan Approve HCP Implementation Agreement

ENVIRONMENTAL CHECKLIST FORM

Issues:	Potentially Significant Impact	Less Than Significant With Mitigation Incorporated	Less Than Significant Impact	No Impact
1. AESTHETICS. Would the project:				
a) Have a substantial adverse effect on a scenic vista?	<input checked="" type="checkbox"/>	<input type="checkbox"/>	<input type="checkbox"/>	<input type="checkbox"/>
b) Substantially damage scenic resources, including, but not limited to, trees, rock outcroppings, and historic buildings within a state scenic highway?	<input checked="" type="checkbox"/>	<input type="checkbox"/>	<input type="checkbox"/>	<input type="checkbox"/>
c) Substantially degrade the existing visual character or quality of the site and its surroundings?	<input checked="" type="checkbox"/>	<input type="checkbox"/>	<input type="checkbox"/>	<input type="checkbox"/>
d) Create a new source of substantial light or glare which would adversely affect day or nighttime views in the area?	<input checked="" type="checkbox"/>	<input type="checkbox"/>	<input type="checkbox"/>	<input type="checkbox"/>
2. AGRICULTURE RESOURCES. In determining whether impacts to agricultural resources are significant environmental effects, lead agencies may refer to the California Agricultural Land Evaluation and Site Assessment Model (1997) prepared by the California Dept. of Conservation as an optional model to use in assessing impacts on agriculture and farmland. Would the project:				
a) Convert Prime Farmland, Unique Farmland, or Farmland of Statewide Importance (Farmland), as shown on the maps prepared pursuant to the Farmland Mapping and Monitoring Program of the California Resources Agency, to non-agricultural use?	<input type="checkbox"/>	<input type="checkbox"/>	<input checked="" type="checkbox"/>	<input type="checkbox"/>
b) Conflict with existing zoning for agricultural use, or a Williamson Act contract?	<input checked="" type="checkbox"/>	<input type="checkbox"/>	<input type="checkbox"/>	<input type="checkbox"/>
c) Involve other changes in the existing environment which, due to their location or nature, could result in conversion of Farmland, to non-agricultural use?	<input checked="" type="checkbox"/>	<input type="checkbox"/>	<input type="checkbox"/>	<input type="checkbox"/>
3. AIR QUALITY. Where available, the significance criteria established by the applicable air quality management or air pollution control district may be relied upon to make the following determinations. Would the project:				
a) Conflict with or obstruct implementation of the applicable air quality plan?	<input checked="" type="checkbox"/>	<input type="checkbox"/>	<input type="checkbox"/>	<input type="checkbox"/>
b) Violate any air quality standard or contribute substantially to an existing or projected air quality violation?	<input checked="" type="checkbox"/>	<input type="checkbox"/>	<input type="checkbox"/>	<input type="checkbox"/>
c) Result in a cumulatively considerable net increase of any criteria pollutant for which the project region is nonattainment under an applicable federal or state ambient air quality standard (including releasing emissions which exceed quantitative thresholds for ozone precursors)?	<input checked="" type="checkbox"/>	<input type="checkbox"/>	<input type="checkbox"/>	<input type="checkbox"/>

Issues:		Potentially Significant Impact	Less Than Significant With Mitigation Incorporated	Less Than Significant Impact	No Impact
d)	Expose sensitive receptors to substantial pollutant concentrations?	■	<input type="checkbox"/>	<input type="checkbox"/>	<input type="checkbox"/>
e)	Create objectionable odors affecting a substantial number of people?	<input type="checkbox"/>	<input type="checkbox"/>	■	<input type="checkbox"/>
4. BIOLOGICAL RESOURCES. Would the project:					
a)	Have a substantial adverse effect, either directly or through habitat modifications, on any species identified as a candidate, sensitive, or special status species in local or regional plans, policies, or regulations, or by the California Department of Fish and Game or U.S. Fish and Wildlife Service?	■	<input type="checkbox"/>	<input type="checkbox"/>	<input type="checkbox"/>
b)	Have a substantial adverse effect on any riparian habitat or other sensitive natural community identified in local or regional plans, policies, or regulations, or by the California Department of Fish and Game or U.S. Fish and Wildlife Service?	■	<input type="checkbox"/>	<input type="checkbox"/>	<input type="checkbox"/>
c)	Have a substantial adverse effect on federally protected wetlands as defined by Section 404 of the Clean Water Act (including, but not limited to, marsh, vernal pool, coastal, etc.) through direct removal, filling, hydrological interruption, or other means?	■	<input type="checkbox"/>	<input type="checkbox"/>	<input type="checkbox"/>
d)	Interfere substantially with the movement of any native resident or migratory fish or wildlife species or with established native resident or migratory wildlife corridors, or impede the use of native wildlife nursery sites?	■	<input type="checkbox"/>	<input type="checkbox"/>	<input type="checkbox"/>
e)	Conflict with any local policies or ordinances protecting biological resources, such as a tree preservation policy or ordinance?	■	<input type="checkbox"/>	<input type="checkbox"/>	<input type="checkbox"/>
f)	Conflict with the provisions of an adopted Habitat Conservation Plan, Natural Community Conservation Plan, or other approved local, regional, or state habitat conservation plan?	■	<input type="checkbox"/>	<input type="checkbox"/>	<input type="checkbox"/>
5. CULTURAL RESOURCES. Would the project:					
a)	Cause a substantial adverse change in the significance of a historical resource as defined in § 15064.5?	■	<input type="checkbox"/>	<input type="checkbox"/>	<input type="checkbox"/>
b)	Cause a substantial adverse change in the significance of an archaeological resource pursuant to § 15064.5?	■	<input type="checkbox"/>	<input type="checkbox"/>	<input type="checkbox"/>
c)	Directly or indirectly destroy a unique paleontological resource or site or unique geologic feature?	■	<input type="checkbox"/>	<input type="checkbox"/>	<input type="checkbox"/>

Issues:	Less Than Significant With Mitigation Incorporated				Less Than Significant Impact	No Impact
	Potentially Significant Impact					
d) Disturb any human remains, including those interred outside of formal cemeteries?	<input checked="" type="checkbox"/>	<input type="checkbox"/>	<input type="checkbox"/>	<input type="checkbox"/>		<input type="checkbox"/>
6. GEOLOGY AND SOILS. Would the project:						
a) Expose people or structures to potential substantial adverse effects, including the risk of loss, injury or death involving:						
i) Rupture of a known earthquake fault, as delineated on the most recent Alquist-Priolo Earthquake Fault Zoning Map issued by the State Geologist for the area or based on other substantial evidence of a known fault? Refer to Division of Mines and Geology Special Publication 42.	<input checked="" type="checkbox"/>	<input type="checkbox"/>	<input type="checkbox"/>	<input type="checkbox"/>		<input type="checkbox"/>
ii) Strong seismic ground shaking?	<input checked="" type="checkbox"/>	<input type="checkbox"/>	<input type="checkbox"/>	<input type="checkbox"/>		<input type="checkbox"/>
iii) Seismic-related ground failure, including liquefaction?	<input checked="" type="checkbox"/>	<input type="checkbox"/>	<input type="checkbox"/>	<input type="checkbox"/>		<input type="checkbox"/>
iv) Landslides?	<input checked="" type="checkbox"/>	<input type="checkbox"/>	<input type="checkbox"/>	<input type="checkbox"/>		<input type="checkbox"/>
b) Result in substantial soil erosion or the loss of topsoil?	<input checked="" type="checkbox"/>	<input type="checkbox"/>	<input type="checkbox"/>	<input type="checkbox"/>		<input type="checkbox"/>
c) Be located on a geologic unit or soil that is unstable, or that would become unstable as a result of the project, and potentially result in on- or off-site landslide, lateral spreading, subsidence, liquefaction or collapse?	<input checked="" type="checkbox"/>	<input type="checkbox"/>	<input type="checkbox"/>	<input type="checkbox"/>		<input type="checkbox"/>
d) Be located on expansive soil, as defined in Table 18-1-B of the Uniform Building Code (1994), creating substantial risks to life or property?	<input type="checkbox"/>	<input type="checkbox"/>	<input type="checkbox"/>	<input checked="" type="checkbox"/>		<input type="checkbox"/>
e) Have soils incapable of adequately supporting the use of septic tanks or alternative waste water disposal systems where sewers are not available for the disposal of waste water?	<input type="checkbox"/>	<input type="checkbox"/>	<input type="checkbox"/>	<input type="checkbox"/>	<input checked="" type="checkbox"/>	<input checked="" type="checkbox"/>
7. HAZARDS AND HAZARDOUS MATERIALS. Would the project:						
a) Create a significant hazard to the public or the environment through the routine transport, use, or disposal of hazardous materials?	<input checked="" type="checkbox"/>	<input type="checkbox"/>	<input type="checkbox"/>	<input type="checkbox"/>		<input type="checkbox"/>
b) Create a significant hazard to the public or the environment through reasonably foreseeable upset and accident conditions involving the release of hazardous materials into the environment?	<input checked="" type="checkbox"/>	<input type="checkbox"/>	<input type="checkbox"/>	<input type="checkbox"/>		<input type="checkbox"/>

Issues:		Potentially Significant Impact	Less Than Significant With Mitigation Incorporated	Less Than Significant Impact	No Impact
c)	Emit hazardous emissions or handle hazardous or acutely hazardous materials, substances, or waste within one-quarter mile of an existing or proposed school?	<input type="checkbox"/>	<input type="checkbox"/>	<input type="checkbox"/>	<input checked="" type="checkbox"/>
d)	Be located on a site which is included on a list of hazardous materials sites compiled pursuant to Government Code section 65962.5 and, as a result, would it create a significant hazard to the public or the environment?	<input type="checkbox"/>	<input type="checkbox"/>	<input checked="" type="checkbox"/>	<input type="checkbox"/>
e)	For a project located within an airport land use plan or, where such a plan has not been adopted, within two miles of a public airport or public use airport, would the project result in a safety hazard for people residing or working in the project area?	<input type="checkbox"/>	<input type="checkbox"/>	<input checked="" type="checkbox"/>	<input type="checkbox"/>
f)	For a project within the vicinity of a private airstrip, would the project result in a safety hazard for people residing or working in the project area?	<input type="checkbox"/>	<input type="checkbox"/>	<input type="checkbox"/>	<input checked="" type="checkbox"/>
g)	Impair implementation of or physically interfere with an adopted emergency response plan or emergency evacuation plan?	<input type="checkbox"/>	<input type="checkbox"/>	<input checked="" type="checkbox"/>	<input type="checkbox"/>
h)	Expose people or structures to a significant risk of loss, injury or death involving wildland fires, including where wildlands are adjacent to urbanized areas or where residences are intermixed with wildlands?	<input checked="" type="checkbox"/>	<input type="checkbox"/>	<input type="checkbox"/>	<input type="checkbox"/>
8. HYDROLOGY AND WATER QUALITY. Would the project:					
a)	During project construction, will it create or contribute urban runoff that would violate any water quality standards or waste discharge requirements, including the terms of the City's municipal separate stormwater sewer system permit? For purposes of Section VIII, "urban runoff" is defined as stormwater and non-stormwater discharges from residential, commercial, industrial, and construction areas. "Urban runoff" does not include discharges from feedlots, dairies, farms, or open space.	<input checked="" type="checkbox"/>	<input type="checkbox"/>	<input type="checkbox"/>	<input type="checkbox"/>
b)	After the project is completed, will it create or contribute urban runoff that would violate any water quality standards or waste discharge requirements, including the terms of the City's municipal separate stormwater sewer system permit?	<input checked="" type="checkbox"/>	<input type="checkbox"/>	<input type="checkbox"/>	<input type="checkbox"/>

Issues:	Less Than Significant With Mitigation Incorporated			
	Potentially Significant Impact	Less Than Significant Impact	Less Than Significant Impact	No Impact
c) Provide for the discharge of substantial additional sources of pollutants into urban runoff, including pollutants discharged from delivery areas; loading docks; other areas where materials are stored, vehicles or equipment are fueled or maintained, waste is handled, or hazardous materials are handled or delivered; other outdoor work areas; or other sources?	<input checked="" type="checkbox"/>	<input type="checkbox"/>	<input type="checkbox"/>	<input type="checkbox"/>
d) Discharge pollutants in urban runoff so that one or more beneficial uses of receiving waters are adversely affected? "Beneficial uses" include all uses of water necessary for the survival or well-being of man, plants, and wildlife.	<input checked="" type="checkbox"/>	<input type="checkbox"/>	<input type="checkbox"/>	<input type="checkbox"/>
e) Violate any water quality standards or waste discharge requirements?	<input checked="" type="checkbox"/>	<input type="checkbox"/>	<input type="checkbox"/>	<input type="checkbox"/>
f) Substantially deplete groundwater supplies or interfere substantially with groundwater recharge such that there would be a net deficit in aquifer volume or a lowering of the local groundwater table level (e.g., the production rate of pre-existing nearby wells would drop to a level which would not support existing land uses or planned uses for which permits have been granted)?	<input checked="" type="checkbox"/>	<input type="checkbox"/>	<input type="checkbox"/>	<input type="checkbox"/>
g) Substantially alter the existing drainage pattern of the site or area, including through the alteration of the course of a stream or river, in a manner which would result in substantial erosion or siltation on- or off-site?	<input checked="" type="checkbox"/>	<input type="checkbox"/>	<input type="checkbox"/>	<input type="checkbox"/>
h) Significantly increase erosion, either on- or off-site?	<input checked="" type="checkbox"/>	<input type="checkbox"/>	<input type="checkbox"/>	<input type="checkbox"/>
i) Substantially alter the existing drainage pattern of the site or area, including through the alteration of the course of a stream or river, or substantially increase the rate or amount of surface runoff in a manner which would result in flooding on- or off-site?	<input checked="" type="checkbox"/>	<input type="checkbox"/>	<input type="checkbox"/>	<input type="checkbox"/>
j) Create or contribute runoff water that would exceed the capacity of existing or planned stormwater drainage systems?	<input checked="" type="checkbox"/>	<input type="checkbox"/>	<input type="checkbox"/>	<input type="checkbox"/>
k) Significantly alter the flow velocity or volume of urban runoff from a project site in a manner that results in environmental harm?	<input checked="" type="checkbox"/>	<input type="checkbox"/>	<input type="checkbox"/>	<input type="checkbox"/>
l) Otherwise substantially degrade water quality?	<input checked="" type="checkbox"/>	<input type="checkbox"/>	<input type="checkbox"/>	<input type="checkbox"/>
m) Place housing within a 100-year flood hazard area as mapped on a Federal Flood Hazard Boundary or Flood Insurance Rate Map or other flood hazard delineation map?	<input type="checkbox"/>	<input type="checkbox"/>	<input type="checkbox"/>	<input checked="" type="checkbox"/>

Issues:		Potentially Significant Impact	Less Than Significant With Mitigation Incorporated	Less Than Significant Impact	No Impact
n)	Place within a 100-year flood hazard area structures which would impede or redirect flood flows?	<input checked="" type="checkbox"/>	<input type="checkbox"/>	<input type="checkbox"/>	<input type="checkbox"/>
o)	Expose people or structures to a significant risk of loss, injury or death involving flooding, including flooding as a result of the failure of a levee or dam?	<input checked="" type="checkbox"/>	<input type="checkbox"/>	<input type="checkbox"/>	<input type="checkbox"/>
p)	Expose people or structures to inundation by seiche, tsunami, or mudflow?	<input checked="" type="checkbox"/>	<input type="checkbox"/>	<input type="checkbox"/>	<input type="checkbox"/>
9. LAND USE AND PLANNING. Would the project:					
a)	Physically divide an established community?	<input type="checkbox"/>	<input type="checkbox"/>	<input type="checkbox"/>	<input checked="" type="checkbox"/>
b)	Conflict with any applicable land use plan, policy, or regulation of an agency with jurisdiction over the project (including, but not limited to the general plan, specific plan, local coastal program, or zoning ordinance) adopted for the purpose of avoiding or mitigating an environmental effect?	<input checked="" type="checkbox"/>	<input type="checkbox"/>	<input type="checkbox"/>	<input type="checkbox"/>
c)	Conflict with any applicable habitat conservation plan or natural community conservation plan?	<input checked="" type="checkbox"/>	<input type="checkbox"/>	<input type="checkbox"/>	<input type="checkbox"/>
10. MINERAL RESOURCES. Would the project:					
a)	Result in the loss of availability of a known mineral resource that would be of value to the region and the residents of the state?	<input checked="" type="checkbox"/>	<input type="checkbox"/>	<input type="checkbox"/>	<input type="checkbox"/>
b)	Result in the loss of availability of a locally important mineral resource recovery site delineated on a local general plan, specific plan or other land use plan?	<input checked="" type="checkbox"/>	<input type="checkbox"/>	<input type="checkbox"/>	<input type="checkbox"/>
11. NOISE. Would the project result in:					
a)	Exposure of persons to or generation of noise levels in excess of standards established in the local general plan or noise ordinance, or applicable standards of other agencies?	<input checked="" type="checkbox"/>	<input type="checkbox"/>	<input type="checkbox"/>	<input type="checkbox"/>
b)	Exposure of persons to or generation of excessive groundborne vibration or groundborne noise levels?	<input type="checkbox"/>	<input type="checkbox"/>	<input checked="" type="checkbox"/>	<input type="checkbox"/>
c)	A substantial permanent increase in ambient noise levels in the project vicinity above levels existing without the project?	<input checked="" type="checkbox"/>	<input type="checkbox"/>	<input type="checkbox"/>	<input type="checkbox"/>
d)	A substantial temporary or periodic increase in ambient noise levels in the project vicinity above levels existing without the project?	<input checked="" type="checkbox"/>	<input type="checkbox"/>	<input type="checkbox"/>	<input type="checkbox"/>

Issues:	Potentially Significant Impact	Less Than Significant With Mitigation Incorporated	Less Than Significant Impact	No Impact
e) For a project located within an airport land use plan or, where such a plan has not been adopted, within two miles of a public airport or public use airport, would the project expose people residing or working in the project area to excessive noise levels?	<input type="checkbox"/>	<input type="checkbox"/>	<input type="checkbox"/>	<input checked="" type="checkbox"/>
f) For a project within the vicinity of a private airstrip, would the project expose people residing or working in the project area to excessive noise levels?	<input type="checkbox"/>	<input type="checkbox"/>	<input type="checkbox"/>	<input checked="" type="checkbox"/>
12. POPULATION AND HOUSING. Would the project:				
a) Induce substantial population growth in an area, either directly (for example, by proposing new homes and businesses) or indirectly (for example, through extension of road or other infrastructure)?	<input checked="" type="checkbox"/>	<input type="checkbox"/>	<input type="checkbox"/>	<input type="checkbox"/>
b) Displace substantial numbers of existing housing, necessitating the construction of replacement housing elsewhere?	<input type="checkbox"/>	<input type="checkbox"/>	<input type="checkbox"/>	<input checked="" type="checkbox"/>
c) Displace substantial numbers of people, necessitating the construction of replacement housing elsewhere?	<input type="checkbox"/>	<input type="checkbox"/>	<input type="checkbox"/>	<input checked="" type="checkbox"/>
13. PUBLIC SERVICES. Would the project result in substantial adverse physical impacts associated with the provision of new or physically altered governmental facilities, need for new or physically altered governmental facilities, the construction of which could cause significant environmental impacts, in order to maintain acceptable service ratios, response times or other performance objectives for any of the public services:				
a) Fire protection?	<input type="checkbox"/>	<input type="checkbox"/>	<input type="checkbox"/>	<input checked="" type="checkbox"/>
b) Police protection?	<input type="checkbox"/>	<input type="checkbox"/>	<input type="checkbox"/>	<input checked="" type="checkbox"/>
c) Schools?	<input type="checkbox"/>	<input type="checkbox"/>	<input type="checkbox"/>	<input checked="" type="checkbox"/>
d) Parks?	<input type="checkbox"/>	<input type="checkbox"/>	<input type="checkbox"/>	<input checked="" type="checkbox"/>
e) Other public facilities?	<input type="checkbox"/>	<input type="checkbox"/>	<input checked="" type="checkbox"/>	<input type="checkbox"/>
14. RECREATION. Would the project:				
c) Increase the use of existing neighborhood and regional parks or other recreational facilities such that substantial physical deterioration of the facility would occur or be accelerated?	<input type="checkbox"/>	<input type="checkbox"/>	<input checked="" type="checkbox"/>	<input type="checkbox"/>
d) Does the project include recreational facilities or require the construction or expansion of recreational facilities which have an adverse physical effect on the environment?	<input checked="" type="checkbox"/>	<input type="checkbox"/>	<input type="checkbox"/>	<input type="checkbox"/>

Issues:		Potentially Significant Impact	Less Than Significant With Mitigation Incorporated	Less Than Significant Impact	No Impact
15. TRANSPORTATION / TRAFFIC. Would the project:					
a)	Cause an increase in traffic which is substantial in relation to the existing traffic load and capacity of the street system (i.e., result in a substantial increase in either the number of vehicle trips, the volume to capacity ratio on roads, or congestion at intersections)?	<input checked="" type="checkbox"/>	<input type="checkbox"/>	<input type="checkbox"/>	<input type="checkbox"/>
b)	Exceed, either individually or cumulatively, a level of service standard established by the county congestion management agency for designated roads or highways?	<input checked="" type="checkbox"/>	<input type="checkbox"/>	<input type="checkbox"/>	<input type="checkbox"/>
c)	Result in a change in air traffic patterns, including either an increase in traffic levels or a change in location that results in substantial safety risks?	<input type="checkbox"/>	<input type="checkbox"/>	<input type="checkbox"/>	<input checked="" type="checkbox"/>
d)	Substantially increase hazards due to a design feature (e.g., sharp curves or dangerous intersections) or incompatible uses (e.g., farm equipment)?	<input checked="" type="checkbox"/>	<input type="checkbox"/>	<input type="checkbox"/>	<input type="checkbox"/>
e)	Result in inadequate emergency access?	<input type="checkbox"/>	<input type="checkbox"/>	<input checked="" type="checkbox"/>	<input type="checkbox"/>
f)	Result in inadequate parking capacity?	<input type="checkbox"/>	<input type="checkbox"/>	<input type="checkbox"/>	<input checked="" type="checkbox"/>
g)	Conflict with adopted policies, plans, or programs supporting alternative transportation (e.g., bus turnouts, bicycle racks)?	<input checked="" type="checkbox"/>	<input type="checkbox"/>	<input type="checkbox"/>	<input type="checkbox"/>
16. UTILITIES AND SERVICE SYSTEMS. Would the project:					
a)	Exceed wastewater treatment requirements of the applicable Regional Water Quality Control Board?	<input checked="" type="checkbox"/>	<input type="checkbox"/>	<input type="checkbox"/>	<input type="checkbox"/>
b)	Require or result in the construction of new water or wastewater treatment facilities or expansion of existing facilities, the construction of which could cause significant environmental effects?	<input type="checkbox"/>	<input type="checkbox"/>	<input checked="" type="checkbox"/>	<input type="checkbox"/>
c)	Require or result in the construction of new stormwater drainage facilities or expansion of existing facilities, the construction of which could cause significant environmental effects?	<input checked="" type="checkbox"/>	<input type="checkbox"/>	<input type="checkbox"/>	<input type="checkbox"/>
d)	Have sufficient water supplies available to serve the project from existing entitlements and resources, or are new or expanded entitlements needed? In making this determination, the City shall consider whether the project is subject to the water supply assessment requirements of Water Code Section 10910, et. seq. (SB 610), and the requirements of Government Code Section 664737 (SB 221).	<input type="checkbox"/>	<input type="checkbox"/>	<input checked="" type="checkbox"/>	<input type="checkbox"/>

Issues:	Potentially Significant Impact	Less Than Significant With Mitigation Incorporated	Less Than Significant Impact	No Impact
e) Result in a determination by the wastewater treatment provider which serves or may serve the project that it has adequate capacity to serve the project's projected demand in addition to the provider's existing commitments?	<input type="checkbox"/>	<input type="checkbox"/>	<input type="checkbox"/>	<input checked="" type="checkbox"/>
f) Be served by a landfill with sufficient permitted capacity to accommodate the project's solid waste disposal needs?	<input type="checkbox"/>	<input type="checkbox"/>	<input checked="" type="checkbox"/>	<input type="checkbox"/>
g) Comply with Federal, State, and local statutes and regulations related to solid waste?	<input type="checkbox"/>	<input type="checkbox"/>	<input type="checkbox"/>	<input checked="" type="checkbox"/>

17. MANDATORY FINDINGS OF SIGNIFICANCE

- a) Does the project have the potential to degrade the quality of the environment, substantially reduce the habitat or a fish or wildlife species, cause a fish or wildlife population to drop below self-sustaining levels, threaten to eliminate a plant or animal community, reduce the number or restrict the range of a rare or endangered plant or animal or eliminate important examples of the major periods of California history or prehistory?
- ☐ ☐ ☐ ☐
- b) Does the project have impacts that are individually limited, but cumulatively considerable? ("Cumulatively considerable" means that the incremental effects of a project are considerable when viewed in connection with the effects of past projects, the effects of other current project, and the effects of probable future projects.)
- ☐ ☐ ☐ ☐
- c) Does the project have environmental effects which will cause substantial adverse effects on human beings, either directly or indirectly?
- ☐ ☐ ☐ ☒

DISCUSSION OF THE ENVIRONMENTAL CHECKLIST FORM RESPONSES

1. Aesthetics

a) *Would the project have a substantial adverse effect on a scenic vista?*

Potentially Significant Impact. The project involves the expansion of mining operations located in a river wash that is surrounded on the east by mountains. Urban uses overlook the site and expansion of the existing mining operations could potentially have a substantial adverse effect on the scenic mountain vista. The EIR will evaluate the impacts of the land use plan including mine expansion on the scenic vista.

b) *Would the project substantially damage scenic resources, including, but not limited to, trees, rock outcroppings, and historic buildings within a state scenic highway?*

Potentially Significant Impact. The Wash Planning area is an open space area that provides visual relief and contrast with the surrounding urban uses. The expansion of the mining operations could intrude into this natural landscape. This issue will be addressed further in the EIR.

c) *Would the project substantially degrade the existing visual character or quality of the site and its surroundings?*

Potentially Significant Impact. The project includes the expansion of aggregate mining operations which could change the visual character of the project area. In addition, new levees for water conservation will be added to the area. The impact of the proposed changes to the visual character of the site will be addressed in the EIR.

d) *Would the project create a new source of substantial light or glare which would adversely affect day or nighttime views in the area?*

Potentially Significant Impact. The project will continue and expand the aggregate mining operation areas. The new mining areas will create a new source of light or glare from the machinery used in the mining operations. In addition the widening of the roadways may add an additional source of light and glare. An analysis of this issue will be included in the EIR.

2. Agriculture Resources

a) *Would the project convert Prime Farmland, Unique Farmland, or Farmland of Statewide Importance (Farmland), as shown on the maps prepared pursuant to the Farmland Mapping and Monitoring Program of the California Resources Agency, to non-agricultural use?*

Less than Significant Impact. According to the Farmland Mapping and Monitoring Program 2001, the project site is not located within an area designated as “Prime” Farmland, Unique Farmland or Farmland of Statewide Importance and the area is not being farmed. Therefore, implementation of the project would have no direct or indirect effect on farmland designated by the California Resources Agency. No further discussion of this issue in the EIR is required.

b) *Would the project conflict with existing zoning for agricultural use, or a Williamson Act contract?*

Potentially Significant Impact. The project site is zoned Open Space (OS) in the City of Highland, Open Land District (O) in the City of Redlands, and Floodway (FW) in the County of San Bernardino. The City of Redlands permits agriculture by right in the Open Land District. The proposed wash land use plan would preclude agricultural uses. An analysis of this issue will be included in the EIR.

- c) *Would the project involve other changes in the existing environment which, due to their location or nature, could result in conversion of farmland to non-agricultural use?*

Potentially Significant Impact. The project involves the widening of public streets in and adjacent to the project area. As agricultural uses are adjacent to the project area, the availability of an improved roadway system could result in the conversion of farmland to non-agricultural use. An analysis of this issue will be included in the EIR.

3. Air Quality

- a) *Would the project conflict with or obstruct implementation of the applicable air quality plan?*

Potentially Significant Impact. Basin-wide air pollution levels are administered by the South Coast Air Quality Management District (SCAQMD) through the Air Quality Management Plan (AQMP). The AQMP provides a program for obtaining attainment status for key monitored air pollutants, based on existing and future air pollution emissions resulting from employment and residential growth projections. Although the mining operations have been included in the emission projections for the Cities of Highland and Redlands, which were subsequently used as input in the formulation of the approved AQMP, the expansion of these operations was not included. An analysis of this issue will be included in the EIR.

- b) *Would the project violate any air quality standard or contribute substantially to an existing or projected air quality violation?*

Potentially Significant Impact. Increased mining activities at the project site may result in localized increased levels of emissions and particulates. Increases in mining operation may generate increased vehicle trips in the project area, leading to increased emissions and air pollutants. In addition, the consumption of electricity and natural gas by the proposed on-site uses will generate air emissions. The project EIR will evaluate the significance of increases in long-term (operational) emissions and particulates generated by the mining operations and will provide appropriate mitigation measures to reduce significant air quality impacts to the degree feasible.

- c) *Would the project result in a cumulatively considerable net increase of any criteria pollutant for which the project region is non-attainment under an applicable federal or state ambient air quality standard (including releasing emissions which exceed quantitative thresholds for ozone precursors)?*

Potentially Significant Impact. As indicated above, air pollutant emissions will be produced during the operational phases of the project. These emissions will be analyzed within the context of other cumulative impacts from projects in the vicinity. The project EIR will evaluate the significance of emissions and particulates generated by cumulative projects within the cumulative study area of Highland, Redlands, and adjacent County area. Appropriate mitigation measures to reduce significant air quality impacts to the degree feasible will be proposed.

- d) *Would the project expose sensitive receptors to substantial pollutant concentrations?*

Potentially Significant Impact. Mining activities on-site will likely generate increased levels of particulates and emissions from increases in mining equipment. Additionally, an increase in air emissions may occur as a result of the anticipated increased traffic volumes associated with expansion of the mining operations on the proposed site. Several residences are located on the north side of Commonwealth Avenue and east of the project site. In addition, undeveloped land zoned for residential homes is located to the east of the project site. These existing homes and the future residences are considered to be receptors sensitive to air emissions generated during the construction and operation of the proposed on-site uses. The project EIR will evaluate the significance of emissions and particulates generated by the proposal and provide appropriate mitigation measures to reduce significant air quality impacts.

e) Would the project create objectionable odors affecting a substantial number of people?

Less Than Significant Impact. The project does not involve uses which typically create long-term odors. The mining of aggregate materials does not generate objectionable odors. Short-term odors released during street construction are usually associated with the use of asphalt. These construction odors are typically controlled through the utilization of equipment to contain and/or neutralize the objectionable odors. The South Coast Air Quality Management District (AQMD) Regulation IV, Rule 402, covers and regulates objectionable odors. With the regulations of the AQMD, the short-term impact from objectionable odors will be below a significant level. This issue will not be addressed further in the EIR.

4. Biological Resources

a) Would the project have a substantial adverse effect, either directly or indirectly or through habitat modification, on any species identified as a candidate, sensitive, or special status in local or regional plans, policies, or regulations, or by the California Department of Fish and Game or U.S. Fish and Wildlife Service?

Potentially Significant Impact. Sensitive and special status biological resources are known to occur on the project site. These resources include but are not limited to the San Bernardino kangaroo rat (*Dipodomys merriami parvus*), the Santa Ana River woollystar (*Eriastrum densifolium* ssp. *sanctorum*), the slender-horned spinyflower (*Dodecathema leptoceras*), and the Plummer's mariposa lily (*Calochortus plummerae*). The expansion of mining operations, widening of public streets, and construction of new water conservation levees could adversely affect sensitive and special status species. As the creation of a habitat conservation plan is part of the project, the effects of the proposed land uses on sensitive and special status biological resources with the conservation plan area may be a benefit. The EIR will assess the potential effect of the land use plan on sensitive and special status biological resources.

b) Would the project have a substantial adverse effect on any riparian habitat of other sensitive natural community identified in local or regional plans, policies, or regulations, or by the California Department of Fish and Game or the U.S. Fish and Wildlife Service?

Potentially Significant Impact. Sensitive vegetation known to occur on the project site include among others, Riversidean alluvial fan sage scrub and coastal sage scrub. Sensitive reptiles known to occur on the site include the California red-legged frog (*Rana aurora draytonii*), mountain yellow-legged frog (*Rana muscosa*), and the arroyo toad (*Bufo microscaphus californicus*). The effects on riparian habitats and other sensitive natural communities of increasing the mining areas, constructing new levees, and widening certain roadways will be addressed in the EIR.

c) Would the project have a substantial adverse effect on federally protected wetlands as defined by Section 404 of the Clean Water Act (including, but not limited to, marsh, vernal pool, coastal, etc.) through direct removal, filling, hydrological interruption, or other means?

Potentially Significant Impact. During the mining process, silt ponds are created which may support wetlands. The U.S. Army Corps of Engineers (Corps) generally does not consider artificial lakes and ponds created by excavating and/or diking dry land to be Waters of the U. S. or wetlands. Such artificial lakes and ponds include settling basins and similar ponds. However, the Corps and the EPA reserve the right to determine on a case-by case basis, if any such areas are jurisdictional Waters of the U.S. or wetlands (FED. Reg. Vol. 51, No. 219, Nov. 13, 1986). The EIR will address this issue.

d) Would the project interfere substantially with the movement of any native resident or migratory fish or wildlife species or with established native or resident migratory wildlife corridors, or impeded the use of native wildlife nursery sites?

Potentially Significant Impact. The implementation of the proposed project will alter the topography and vegetation of the wash planning area. This action could result in the loss of nesting habitat for the California gnatcatcher

(*Polioptila californica*), least Bell's vireo (*Vireo bellii pusillus*), and southwestern willow flycatcher (*Empidonax trailii*), among others. Foraging habitat for Cooper's hawk (*Accipiter cooperi*) could also be impacted. The impact on wildlife corridors and/or native wildlife nursery sites on the site will be addressed in the EIR.

- e) Would the project conflict with any local policies or ordinances protecting biological resources, such as a tree preservation policy or ordinance?*

Potentially Significant Impact. Implementation of the proposed project may remove trees for roadway widening and mining activities in conflict with the City of Highland Tree Preservation Ordinance. The proposed project includes mining in an area designated for Santa Ana River woollystar preservation, which is in conflict with the City of Redlands' policy to support Corps mitigation efforts for this species. These issues will be discussed further in the EIR.

- f) Would the project conflict with the provisions of an adopted habitat conservation plan, natural community conservation plan, or other approved local, regional, or state habitat conservation plan?*

Potentially Significant Impact. The proposed project includes mining an area designated for the preservation of the Santa Ana River woollystar. This Santa Ana River woollystar preservation area was created as part of the mitigation for the Seven Oaks Dam located north of the project site. The EIR will address the project's potential conflict with this regional conservation plan.

5. Cultural Resources

- a) Would the project cause a substantial adverse change in the significance of a historical resource as defined in §15064.5?*

Potentially Significant Impact. The project includes road widening in close proximity to a known historical resource, the GreenSpot Road Bridge. Therefore, impacts associated with this issue will be discussed in the EIR.

- b) Would the project cause a substantial adverse change in the significance of an archaeological resource pursuant to §15064.5?*

Potentially Significant Impact. There is the potential for archaeological resources to be uncovered during the course of ground-disturbing activities, such as mining, road widening, and levee construction. Therefore, records of known resources and the potential for impacts from the proposed project will be discussed further in the EIR.

- c) Would the project directly or indirectly destroy a unique paleontological resource or site or unique geologic feature?*

Potentially Significant Impact. The potential for subsurface occurrences of Early Holocene or Pleistocene Age sediments that would be potentially fossil-bearing on the project site has not been determined. Paleontological resources are known from similarly-aged sediments in the region, particularly downstream, which have yielded vertebrate fossils from several locations. Mining in the area will expose a great amount of material that may contain fossil deposits. Therefore, this issue will be discussed further in the EIR.

- d) Would the project disturb any human remains, including those interred outside of formal cemeteries?*

Potentially Significant Impact. No formal cemeteries are located within the limits of the project site; however, the area is known to have been inhabited at one time by Native Americans. Mining operations, road widening, and levee construction may disturb human remains that have been interred outside formal cemeteries. Further discussion of this topic will occur in the EIR

6. Geology and Soils

- a) *Would the project expose people or structures to potential adverse effects, including risk of loss, injury, or death involving:*

- i) *Rupture of a known earthquake fault, as delineated on the most recent Alquist-Priolo Earthquake Fault Zoning Map issued by the State Geologist for the area or based on other substantial evidence of a known fault?*

Potentially Significant Impact. The project site is located within one of the most seismically active regions of the State and portions of the site are within one mile of an Alquist-Priolo Earthquake Hazard Zone located within the City of Highland. This topic will be addressed further in the EIR.

- ii) *Strong seismic ground shaking?*

Potentially Significant Impact. Like most of Southern California, the project site is located in a seismically active region and subject to strong to severe ground shaking. This topic will be addressed further in the EIR.

- iii) *Seismic-related ground failure, including liquefaction?*

Potentially Significant Impact. There is the possibility of seismic-related ground failure and liquefaction at the project site as Southern California is a seismically active region. This topic will be addressed further in the EIR.

- iv) *Landslides?*

Potentially Significant Impact. The project site is located near hillsides with mapped existing landslides as shown in the San Bernardino County Official Land Use Plan, General Plan, Geologic Hazard Overlay Map (Matti, et al. 1992). The site is also adjacent to a hillside area which was recently denuded of vegetation due to a wildland fire. The barren hillsides create additional potential for landslides. This topic will be discussed in the EIR.

- b) *Would the project result in substantial soil erosion or loss of topsoil?*

Potentially Significant Impact. The proposed project includes mining activities which involve the removal or relocation of existing topsoil. This topic will be addressed further in the EIR.

- c) *Would the project be located on a geologic unit or soil that is unstable, or that would become unstable as a result of the project, and potentially result in on- or off-site landslide, lateral spreading, subsidence, liquefaction or collapse?*

Potentially Significant Impact. As the project includes mining activities, there is the potential for landslides or collapse during excavation. These issues will be discussed further in the EIR.

- d) *Would the project be located on expansive soils, as defined in Table 18-1-b of the Uniform Building Code (1994), creating substantial risks to life or property?*

Less than Significant Impact. Expansive soils are those possessing a shrink-swell potential or a potential for change in volume with changes in moisture content. These soils generally consist of clays, silty to sandy clay and clayed sand. Soils located in the Planning Area consist of alluvial fan deposits consisting of stream and river deposited sediments, primarily gravels ultimately derived from granitic bedrock of the San Bernardino Mountains. These soils are not considered expansive soils and would not create substantial risks to life or property. No further discussion of this issue in the EIR is necessary.

- e) *Would the project have soils incapable of adequately supporting the use of septic tanks or alternative wastewater disposal systems where sewers are not available for the disposal of wastewater?*

No Impact. The proposed project does not include new building construction and the existing mining facilities are connected to the municipal sanitary sewer systems in Highland or Redlands. Because septic or alternative waste disposal systems will not be utilized, no impact related to this issue would occur. No further discussion of this issue in the EIR is necessary.

7. Hazards and Hazardous Materials

- a) *Would the project create a significant hazard to the public or the environment through the routine transport, use, or disposal of hazardous materials?*

Potentially Significant Impact. The proposed mining operations use petroleum products, concrete admixtures, oils, and greases in conjunction with their operations. The transport, storage, and handling of these substances are routinely conducted at both mining sites and analysis of this issue will be included in the EIR.

- b) *Would the project create a significant hazard to the public or the environment through reasonably foreseeable upset and accident conditions involving the release of hazardous materials into the environment?*

Potentially Significant Impact. Please refer to response 7(a).

- c) *Would the project emit hazardous emissions or handle hazardous or acutely hazardous materials, substances, or waste within one-quarter mile of an existing or proposed school?*

No Impact. No existing or proposed schools are located within 0.25 mile of the proposed project site; therefore, no impact related to this issue will occur. No additional discussion of this issue in the EIR is required.

- d) *Would the project be located on a site which is included on a list of hazardous materials sites compiled pursuant to Government Code Section 65962.5 and, as a result, would it create a significant hazard to the public or the environment?*

Less Than Significant Impact. The project site is not listed on the Department of Toxic Substance Control's Hazardous Waste and Substance Site List (Cortese List). Therefore, implementation of the project would not create a significant hazard to the public or the environment. No additional discussion of this issue in the EIR is required.

- e) *For a project located within an airport land use plan or, where such a plan has not been adopted, within two miles of a public airport or public use airport, would the project result in a safety hazard for people residing or working in the project area?*

Less Than Significant Impact. Although the project site is within the land use plan of the Redlands Municipal Airport and the San Bernardino International Airport, no new building structures are proposed in the Plan which would affect the flight patterns of the airports. Additionally, no new land uses are proposed which would conflict with airport uses. The existing land uses of mining, flood control, water conservation, trails, and habitat conservation will continue on the site albeit in a different arrangement. No additional discussion of this issue in the EIR is required.

- f) *For a project located within the vicinity of a private airstrip, would the project result in a safety hazard for people residing or working in the project area?*

No Impact. There are no private airstrips within the vicinity of the proposed project and, in that regard, the proposed project would not cause a safety hazard for people residing or working in the area. No additional discussion of this issue is required in the EIR.

- g) *Would the project impair implementation of or physically interfere with an adopted emergency response plan or emergency evacuation plan?*

Less Than Significant Impact. Emergency Plans for natural disasters such as earthquakes and man-made disasters such as dam failure are implemented by the Cities of Highland and Redlands and the County of San Bernardino. Construction activities for road widening may temporarily restrict vehicular traffic; however, the project applicants will be required to implement adequate and appropriate measures to facilitate the passage of persons and vehicles through/around any required road closures. Project implementation will be required to design, construct, and maintain roadways that comply with applicable local, regional, State and/or Federal requirements related to emergency access and evacuation plans. Adherence to these measures will reduce potential impacts related to this issue to a less than significant level. No additional discussion of this issue in the project EIR is required.

- h) *Would the project expose people or structures to a significant risk of loss, injury or death involving wildland fires, including where wildlands are adjacent to urbanized areas or where residences are intermixed with wildlands?*

Potentially Significant Impact. The project site is near vegetated natural hillsides susceptible to wildland fires. The Plan does not include the development of structures or residences; however, additional persons working in expanded mining operations would be exposed to the risks of wildland fires. Further analysis of this issue will be included in the EIR.

8. Hydrology and Water Quality. Would the project:

- a) *During project construction, will it create or contribute urban runoff that would violate any water quality standards or waste discharge requirements, including the terms of the City's municipal separate stormwater sewer system permit? For purposes of Section VIII, "urban runoff" is defined as stormwater and non-stormwater discharges from residential, commercial, industrial, and construction areas. "Urban runoff" does not include discharges from feedlots, dairies, farms, or open space.*

Potentially Significant Impact. Due to soil disturbance (grading, excavation, etc.), and the storage and use of hazardous materials (fuels, solvents, etc.), the construction phase of the project has the potential to result in significant impacts to the water quality of the Santa Ana River. Because the project will disturb at least one acre of soil during construction, it must comply with the State General Construction Activity National Pollutant Discharge Elimination System (NPDES) Permit (Water Quality Order 99-08-DWQ). Requirements include submission of a Notice of Intent (to construct) to the State Water Resources Control Board, preparation of a Storm Water Pollution Prevention Plan (SWPPP), and implementation of Best Management Practices (BMP) detailed in the SWPPP during construction activities. The permit requirements are designed to prevent construction pollutants from contacting stormwater and to keep all products of erosion from moving off-site into receiving waters. This issue will be addressed in the EIR.

- b) *After the project is completed, will it create or contribute urban runoff that would violate any water quality standards or waste discharge requirements, including the terms of the City's municipal separate stormwater sewer system permit?*

Potentially Significant Impact. The expansion of the mining facilities and the extension/widening of the roadways have the potential to introduce increased concentrations of pollutants into the Santa Ana River and Plunge Creek. The project will be required to comply with the appropriate City's policies and ordinances that implement the requirements of the City's stormwater sewer system permit (NPDES permit) in order to protect the beneficial uses of the Santa Ana River and Plunge Creek. Additionally, Regional Water Quality Control Board Waste Discharge Requirement Permits may need to be modified for the mining operations. This issue will be analyzed in the EIR.

- c) *Provide for the discharge of substantial additional sources of pollutants into urban runoff, including pollutants discharged from delivery areas; loading docks; other areas where materials are stored, vehicles or equipment are fueled or maintained, waste is handled, or hazardous materials are handled or delivered; other outdoor work areas; or other sources?*

Potentially Significant Impact. The project involves expansion of existing uses; therefore, there is a potential for increased pollutant loading of urban runoff from the site. Both mining operations maintain SWPPPs at their plants and mining operations which require containment of possible pollutants (e.g., fuel, oil, chemicals). The project will be required to comply with City policies and ordinances that pertain to handling of hazardous materials/waste and protection of water quality. This issue will be analyzed in the EIR.

- d) *Discharge pollutants in urban runoff so that one or more beneficial uses of receiving waters are adversely affected? "Beneficial uses" include all uses of water necessary for the survival or well-being of man, plants, and wildlife.*

Potentially Significant Impact. See a) through c) above. This issue will be analyzed in the EIR.

- e) *Violate any water quality standards or waste discharge requirements?*

Potentially Significant Impact. As required by the State General NPDES Permit for industrial activities, both mining operations maintain SWPPPs at their plants and mining operations which require containment of possible pollutants (e.g., fuel, oil, chemicals), regular inspections of the site and equipment, and sampling of runoff generated from the site during storm events. The effectiveness of these programs in meeting water quality standards and waste discharge requirements will be analyzed in the EIR. See items a) and b) above for a discussion of construction and municipal waste discharge requirements.

- f) *Substantially deplete groundwater supplies or interfere substantially with groundwater recharge such that there would be a net deficit in aquifer volume or a lowering of the local groundwater table level (e.g., the production rate of preexisting nearby wells would drop to a level which would not support existing land uses or planned uses for which permits have been granted)?*

Potentially Significant Impact. While the project includes the addition of new levees to maintain the water conservation activities of the San Bernardino Valley Water Conservation District, the expanded mining operations have the potential to reduce infiltration of groundwater in these areas due to compaction of the ground surface from heavy equipment operation. In addition, dewatering may be required during mining activities. Finally, expansion of the adjacent roadways will reduce the amount of pervious area available for groundwater recharge. This issue will be analyzed in the EIR.

- g) *Substantially alter the existing drainage pattern of the site or area, including through the alteration of the course of a stream or river, in a manner which would result in substantial erosion or siltation on- or off-site?*

Potentially Significant Impact. The project is located in the wash area of Santa Ana River and Plunge Creek. Expansion of mining operations may alter the overflow drainage area of the Santa Ana River and Plunge Creek. Runoff resulting from direct precipitation on active and unreclaimed (not revegetated) disturbed mining areas has the potential to cause erosion and subsequent siltation in the area. This topic will be further discussed in the EIR.

- h) *Significantly increase erosion, either on or off-site?*

Potentially Significant Impact. During construction of the project roadways and during mining operations, the soil will be disturbed and there is the potential for an increase in erosion. This topic will be further discussed in the EIR.

- i) *Substantially alter the existing drainage pattern of the site or area, including through the alteration of the course of a stream or river, or substantially increase the rate or amount of surface runoff in a manner which would result in flooding on- or off-site?*

Potentially Significant Impact. Now that the Seven Oaks Dam is completed, storm flows entering the project area from the Santa Ana River are expected to be reduced sufficiently to minimize the risk of storm flows breaking into the mining area pits and causing accelerated erosion of the headward (upstream) quarry slopes. With the recent wildland fires in the vicinity, the FEMA flood maps depict possible storm flows in the mining areas from Mill Creek as it joins the Santa Ana River. This issue will be discussed further in the EIR.

- j) *Create or contribute runoff water that would exceed the capacity of existing or planned stormwater drainage systems?*

Potentially Significant Impact. Expansion of the mining operations would not create impervious surfaces or other facilities that would increase the flow of storm water to Plunge Creek or the Santa Ana River. The roadway widening projects will create additional impervious surfaces. If necessary, new drainage facilities to handle the increased runoff will be included in the roadway widening portion of the project. This issue will be discussed further in the EIR.

- k) *Significantly alter the flow velocity or volume of urban runoff from a project site in a manner that results in environmental harm?*

Potentially Significant Impact. Roadway widening has the potential to significantly increase the velocity or volume of urban runoff. The widening of the roadways would increase the impervious areas, which increases runoff velocity and volume. The continuation and expansion of the mining operations would not create impervious surfaces or other facilities that would increase the flow of stormwater into City Creek, Plunge Creek, or the Santa Ana River. The quarries would act as detention/retention basins, capturing a volume of runoff and allowing infiltration into the soil. This issue will be discussed in the EIR.

- l) *Otherwise substantially degrade water quality?*

Potentially Significant Impact. The proposed project includes the continuation and the expansion of aggregate processing sites. The SWPPPs are currently followed at each site and will be updated if necessary. These operations have the potential to degrade water quality through surface water runoff as hazardous materials are used in the process. This issue will be discussed further in the EIR.

- m) *Place housing within a 100-year flood hazard area as mapped on a Federal Flood Hazard Boundary or Flood Insurance Rate Map or other flood hazard delineation?*

No Impact. The project does not include the construction of housing; therefore, no impact associated with this issue will occur. Further discussion of this topic in the EIR is not necessary.

- n) *Place within a 100-year flood hazard area structures which would impede or redirect flood flows?*

Potentially Significant Impact. With the completion of the Seven Oaks Dam, the mining areas are outside the Santa Ana River and Plunge Creek 100-year floodplain as assessed by the Corps. However, with the recent wildfires in the region, the wash area is subject to flooding from Mill Creek as assessed on recent FEMA maps. In addition, new levees designed for water conservation are included in the project and will impede or redirect water flows for the purpose of recharging the groundwater. This topic will be further discussed in the EIR.

- o) Expose people or structures to a significant risk of loss, injury or death involving flooding, including flooding as a result of the failure of a levee or dam?*

Potentially Significant Impact. The project site is located within the inundation area which would occur with the failure of the Seven Oaks Dam. Persons working in the mining areas could potentially be exposed to the hazards of this dam failure. Also, persons working in the mining operations could be subject to the impacts of flooding from Plunge and Mill Creeks. The existing mining operations have implemented mitigation measures for the possibility of this occurrence in existing quarries and will need to provide flood mitigation measures for the expanded quarries. These issues will be discussed further in the EIR.

- p) Expose people or structures to inundation by seiche, tsunami, or mudflow?*

Potentially Significant Impact. The project site is not located adjacent to coastal waters; however, it is adjacent to hillsides subject to mudflows due to the recent wildfires. The project site also has contained bodies of water in the mining silt ponds and water conservation facilities. Therefore, this issue will be discussed further in the EIR.

9. Land Use and Planning

- a) Would the project physically divide an established community?*

No Impact. The project site does not contain any existing housing that constitutes a community or neighborhood. No habitable structures are proposed as part of the project. The site would not be located within or divide existing neighborhoods, nor would it introduce a barrier between residential uses; therefore, no impact related to this issue will occur. No further analysis of this issue in the project EIR is required.

- b) Would the project conflict with any applicable land use plan, policy, or regulation of an agency with jurisdiction over the project (including, but not limited to the general plan, specific plan, or zoning ordinance) adopted for the purpose of avoiding or mitigating an environmental effect?*

Potentially Significant Impact. The proposed project is under the jurisdiction of the Cities of Highland and Redlands and the County of San Bernardino. With new trails, roadway widening, and mining operation expansion included in the plan, conflict with applicable land use plans may occur. This issue will be discussed further in the EIR.

- c) Would the project conflict with any applicable habitat conservation plan or natural community conservation plan?*

Potentially Significant Impact. The Plan includes mining activities in an area designated for Santa Ana River woollystar preservation under mitigation approved for the Seven Oaks Dam. Conflicts with this preservation area and the positive impacts created in the establishment of a Habitat Conservation Plan for the Wash area will be analyzed in the EIR.

10. Mineral Resources

- a) Would the project result in the loss of availability of a known mineral resource that would be of value to the region and the residents of the state?*

Potentially Significant Impact. The California Department of Mines and Geology has identified the Planning Area as having substantial mineral resources which are of value to the region and the residents of the state. The proposed plan would alter the existing mined areas with the amount of area proposed for long-term mining production increasing. The proposed project includes mining a portion of the area known to contain substantial mineral resources and creating a habitat conservation area over another portion of the area. The creation of the habitat conservation area would involve the loss of the known mineral resources in that location. This issue will be discussed further in the EIR.

- b) *Would the project result in the loss of availability of a locally-important mineral resource recovery site delineated on a local general plan, specific plan or other land use plan?*

Potentially Significant Impact. See 10(a) above.

11. Noise

- a) *Would the project result in exposure of persons to or generation of noise levels in excess of standards established in the local general plan or noise ordinance, or applicable standards of other agencies?*

Potentially Significant Impact. The proposed project includes the continuation and expansion of existing mining operations and modification of areas to be mined. Increased traffic generated by the expansion of one of the mining operations and the addition of new mining areas may result in long-term increased noise levels in the project vicinity. Additionally, the widening of roadways within and adjacent to the project may increase noise levels in the project vicinity due to increased traffic volumes. This potential increase in noise levels may affect persons living in nearby residential units. This issue will be discussed further in the EIR.

- b) *Would the project result in exposure of persons to or generation of excessive groundborne vibration or groundborne noise levels?*

Less Than Significant Impact. The widening of certain roadways in the project vicinity will require the use of earthmoving and construction vehicles. The operation of these vehicles would temporarily increase the potential for groundborne vibration and/or noise. Vibration/noise impacts resulting from project construction will be short-term. The operation of the construction equipment will be required to be in compliance with applicable City standards regarding the generation of ground vibration or ground borne noise. Mining excavation will create excessive long-term groundborne vibration or noise; however, problems with groundborne vibration and noise from these sources are typically localized to areas within about 100 feet from the vibration source. No persons or structures are located or will be located within 100 feet of mining excavation activities. Truck traffic associated with the mining operations could potentially cause groundborne vibration or noise of rough roads. However, the roadways around the project site are smooth; vibration from the heavy trucks would be less than significant. No further analysis of this issue in the project EIR is required.

- c) *Would the project result in a substantial permanent increase in ambient noise levels in the project vicinity above levels existing without the project?*

Potentially Significant Impact. Implementation of the project may increase the amount of truck traffic within and adjacent to the project site, both during and after construction. These trips plus any noise from mining equipment will be addressed in the EIR.

- d) *Would the project result in a substantial temporary or periodic increase in ambient noise levels in the project vicinity above levels existing without the project?*

Potentially Significant Impact. Implementation of the project will involve moving the equipment involved in mining operation. Some of this equipment produces periodic noise and may increase the ambient noise levels in the project vicinity. Construction truck and equipment noise will be addressed in the EIR.

- e) *For a project located within an airport land use plan or, where such a plan has not been adopted, within two miles of a public airport or public use airport, would the project expose people residing or working in the project area to excessive noise levels?*

No Impact. The project site is located adjacent to the San Bernardino International Airport and the Redlands Municipal Airport. Development of the proposed mining, conservation, and land exchange will not expose persons

working or residing in the project area to excessive noise from these air facilities. As no impact related to this issue will occur, no further discussion of this issue in the EIR is required.

- f) For a project within the vicinity of a private airstrip, would the project expose people residing or working in the project area to excessive noise levels?*

No Impact. The proposed project site is not within the vicinity of a private airstrip. Therefore, no impact associated with this issue is anticipated. No further discussion of this issue in the project EIR is required.

12. Population and Housing

- a) Would the project induce substantial population growth in an area, either directly (for example, by proposing new homes and businesses) or indirectly (for example, through extension of roads or other infrastructure)?*

Potentially Significant Impact. The project does not include developing new homes or businesses and, therefore, will not directly induce population growth. The project is responding to the demand and need for aggregate materials of the Southern California building industry. The proposed street widening is consistent with the Circulation Elements of the General Plans of the Cities of Highland and Redlands. Implementation of the proposed project will not result in impacts associated with this issue. The EIR will address potential growth inducing effects, if any, of the proposed project.

- b) Would the project displace substantial numbers of existing housing, necessitating the construction of replacement housing elsewhere?*

No Impact. The project site does not contain any housing units and the proposed roadway widening would not displace any residential parcels. Therefore, no substantial displacement of housing or residents will occur and there are no impacts associated with this issue. No further analysis of this issue in the project EIR is required.

- c) Would the project displace substantial numbers of people, necessitating the construction of replacement housing elsewhere?*

No Impact. Please refer to Response 12(b).

- 13. Public Services: Would the project result in substantial adverse physical impacts associated with the provision of new or physically altered governmental facilities, need for new or physically altered governmental facilities, the construction of which would cause significant environmental impacts, in order to maintain acceptable service ratios, response times or other performance objectives for any of the public services:**

- a) Fire Protection*

No Impact. Implementation of the project will require no new fire services above the existing services as no new uses or structures are proposed. No further analysis of this issue in the EIR is required.

- b) Police Protection?*

No Impact. The project will not change the existing demand for police services from the current level as no new uses or structures are proposed. No further analysis of this issue in the EIR is required.

- c) Schools?*

No Impact. No residential units are proposed; therefore, no new students will be generated by the project. No further analysis of this issue in the EIR is required.

d) Parks?

No Impact. The project does not propose any new residential structures or increases in workers in the area; therefore, no demand for new parks or park uses will be created. No further analysis of this issue in the EIR is required.

e) Other Public Facilities?

Less than Significant Impact. Maintenance of public infrastructure in the Cities of Highland and Redlands would be altered by implementation of the proposed project. The widening of roadways (Alabama Street and Orange Street) and realignment and new bridge on GreenSpot Road would increase the area of roadway infrastructure to be maintained. However, the widening of these roadways is part of the Capital Improvement Programs in either the City of Highland or the City of Redlands and, therefore, is an anticipated increase in roadway maintenance services. The roadway maintenance required due to mining operations is compensated through fees. Therefore, a less than significant impact is expected from implementation of the proposed project. No further analysis of this issue in the project EIR is required.

14. Recreation

a) *Would the project increase the use of existing neighborhood and regional parks or other recreational facilities such that substantial physical deterioration of the facility would occur or be accelerated?*

Less than Significant Impact. The proposed project does not include a residential component which would increase the population using parks. While implementation of the project includes the development of new trails, the use of these trails should not impact the facilities at existing neighborhood and regional parks. The new trails will benefit the recreational public by adding new recreational facilities to use. No further discussion of this issue in the EIR is required.

b) *Would the project provide recreational facilities or require the construction or expansion of recreational facilities which might have an adverse physical effect on the environment?*

Potentially Significant Impact. The project includes the development of trails in an area known to contain endangered species. This issue will be discussed further in the EIR.

15. Transportation/Traffic

a) *Would the project cause an increase in traffic which is substantial in relation to the existing traffic load and capacity of the street system (i.e., result in a substantial increase in either the number of vehicle trips, the volume to capacity ratio on roads, or congestion at intersections)?*

Potentially Significant Impact. Implementation of the proposed project may result in increased vehicle trips during the long-term operational phases of the project, particularly with the expansion of the mining operation. Potential roadway and intersection congestion in the project vicinity may result. Project trip generation estimates and project traffic impacts will be identified in a technical traffic study currently being prepared for the project EIR. The results of the technical traffic study will be incorporated as an element of the project EIR. The traffic study will include detailed evaluation of existing traffic volumes and patterns, and effects of this proposal on local and future projected traffic characteristics.

b) *Would the project exceed, either individually or cumulatively, a level of service standard established by the county congestion management agency for designated roads or highways?*

Potentially Significant Impact. The proposed project may increase the volume of traffic on the designated CMP Highways of Orange Street, State Route 30, and portions of Greenspot Road. The increase in traffic volumes anticipated with the increase in mining operation will be analyzed in the EIR.

- c) *Would the project result in a change in air traffic patterns, including either an increase in traffic levels or a change in location that results in substantial safety risks?*

No Impact. The project site is located within the land use plan of the San Bernardino International Airport and the Redlands Municipal Airport. However, the project will not change air traffic patterns or levels as new structures are not proposed in the project. No further analysis of this issue in the EIR is required.

- d) *Would the project substantially increase hazards due to a design feature (e.g., sharp curves or dangerous intersections) or incompatible uses (e.g., farm equipment)?*

Potentially Significant Impact. Implementation of the proposed project includes the improvement of three existing roadways. Potential impacts associated with the design of the proposed project's circulation features will be assessed in the project EIR.

- e) *Would the project result in inadequate emergency access?*

Less than Significant Impact. The final design of all roadways and intersections within the project site will incorporate design standards tailored specifically to site access requirements. Adherence to applicable requirements of the City, and/or other agencies will reduce impacts associated with this issue to a less than significant level. No additional analysis of this issue in the project EIR is required.

- f) *Would the project result in inadequate parking capacity?*

No Impact. The proposed project does not include construction of new land uses or facilities that would require parking. Existing facilities provide an adequate number of parking spaces per City of Highland and City of Redlands standards. Parking of construction vehicles can be accommodated on site. No further discussion of this issue in the EIR is required.

- g) *Would the project conflict with adopted policies, plans, or programs supporting alternative transportation (e.g., bus turnouts, bicycle racks)?*

Potentially Significant Impact. The Cities of Highland and Redlands both have adopted policies supporting alternative transportation. The proposed projects compliance with these policies as related to the expansion of the roadways and the increase in operation at the Robertson plant facility will be discussed in the EIR.

16. Utilities and Service Systems

- a) *Would the project exceed wastewater treatment requirements of the applicable Regional Water Quality Control Board?*

Potentially Significant Impact. Under Section 402 of the Clean Water Act (CWA) the Regional Water Quality Control Board (RWQCB), Santa Ana Region issues National Pollutant Discharge Elimination System (NPDES) permits to regulate waste discharges to “waters of the nation,” which includes rivers, lakes, and their tributary waters. Waste discharges include discharges of stormwater and construction project discharges. A construction project resulting in the disturbance of more than one acre requires an NPDES permit as is the case of the roadway widening and the new bridge. No water contaminants are associated with the aggregate operations and the RWQCB typically waives discharge permits. This issue will be further discussed in the EIR.

- b) *Would the project require or result in the construction of new water or wastewater treatment facilities or expansion of existing facilities, the construction of which could cause significant environmental effects?*

Less Than Significant Impact. The two water users in the proposed project, the mining companies, both maintain wells for their operations. Robertson's maintains wells at the Highland Plant and Cemex maintains wells at its Orange Street and Alabama Street Plants. The mining processes use water in their aggregate plants and for washing and dust control. New water facilities will not be necessary for the proposed project. Wastewater from the mining operations is either recycled or deposited in the silt ponds. Therefore, implementation of the project will not generate the need for new water or wastewater facilities and the impact of the project would be less than significant. No further discussion of this issue in the EIR is required.

- c) *Would the project require or result in the construction of new storm water drainage facilities or expansion of existing facilities, the construction of which could cause significant environmental effects?*

Potentially Significant Impact. The widening of the roadways may require the expansion of existing drainage facilities, the construction of which could cause significant environmental effects. The mining operations do not create impervious surfaces or other facilities that would increase the flow of stormwater requiring new stormwater drainage facilities or expansion of existing facilities. Precipitation falling directly over the quarry, and in limited upstream areas, would be held in the quarry and infiltrate into the alluvium, reducing the downstream storm flow. Continued and increased mining will, therefore, not result in increased storm flow from existing or future conditions. Further analysis of the project's potential impact related to roadway drainage will be included in the EIR.

- d) *Would the project have sufficient water supplies available to serve the project from existing entitlements and resources, or are new or expanded entitlements needed?*

Less than Significant Impact. Water used in the mining operations is withdrawn from the Bunker Hill Basin which underlies the project site and also serves as a source of public water supply. Water for the Cemex operations is supplied from existing wells located in the northwestern portion of the Alabama Street Quarry and on the south side of the Orange Street Plant. Water used in the Robertson operation is supplied from the existing wells located in the west and east basins of the Highland and East Basin facilities. Additional water needed for the proposed expansion of the Robertson operation will be supplied by these wells. The basin has sufficient capacity to supply the limited increase in water necessary for the proposed increase in operations by Robertson's. Because no new water entitlements are necessary and sufficient supplies are available to meet the demand, potential impacts related to water supply are less than significant. No further discussion of this issue in the EIR is required.

- e) *Would the project result in a determination by the wastewater treatment provider which serves or may serve the project that it has adequate capacity to serve the project's projected demand in addition to the provider's existing commitments?*

No Impact. Please refer to Response 16(b).

- f) *Would the project be served by a landfill with sufficient permitted capacity to accommodate the Project's solid waste disposal needs?*

Less Than Significant Impact. Implementation of the project will not increase domestic refuse generated by the mining operations on the site. Therefore, no significant impacts to solid waste or disposal facilities are anticipated. No additional analysis of this issue in the project EIR is required.

- g) *Would the project comply with Federal, State, and local statutes and regulations related to solid waste?*

No Impact. The mining plants will continue to recycle materials per applicable City, County, or State programs and no changes to these programs are included in the project. No impact related to this issue is anticipated. No further analysis of this issue in the project EIR is required.

17. Mandatory Findings of Significance

- a) *Does the project have the potential to degrade the quality of the environment, substantially reduce the habitat of a fish or wildlife species, cause a fish or wildlife population to drop below self-sustaining levels, threaten to eliminate a plant or animal community, reduce the number or restrict the range of a rare or endangered plant or animal or eliminate important examples of the major periods of California history or prehistory?*

Potentially Significant Impact. The project has the potential to reduce the habitat of wildlife species; threaten a plant and animal community, and reduce the number of rare or endangered plants or animals. The biological impacts of the project will be assessed in the EIR.

- b) *Does the project have impacts that are individually limited, but cumulatively considerable? ("Cumulatively considerable" means that the incremental effects of a project are considerable when viewed in connection with the effects of past projects, the effects of other current projects, and the effects of probable future projects.)*

Potentially Significant Impact. Impacts associated with the proposed project that are individually limited, such as potential increases in traffic, may be cumulatively considerable, and will be assessed in the EIR.

- c) *Does the project have environmental effects which will cause substantial adverse effects on human beings, either directly or indirectly?*

Potentially Significant Impact. The proposed project may increase the amount of traffic on local roadways. The increase in traffic generated may directly or indirectly contribute to adverse noise and air quality impacts. Mining activities may contribute to the degradation of the water quality in the region. These issues will be further analyzed in the EIR.

REFERENCES

- City of Highland, *General Plan and Environmental Impact Report*, October 1992.
- City of Redlands, *1995 General Plan, August 1995, Amended December 12, 1997.*
- City of Redlands, *General Plan Master Environmental Assessment/Final EIR*, October 17, 1995.
- Lilburn Corporation, *Mine and Reclamation Plan for the Santa Ana Wash Mine to be Operated by Cemex Construction Materials L.P.*, June 2003.
- Lilburn Corporation, *Mine and Reclamation Plan for the Santa Ana Wash Mine to be Operated by Robertson's Ready Mix*, June 2003.
- Lilburn Corporation, *Robertson's Ready Mix, Santa Ana Wash Agreement, Draft Environmental Impact Report*, June 1997.
- Lilburn Corporation, *Robertson's Ready Mix, Santa Ana Wash Development Agreement, Technical Appendices for the Draft Environmental Impact Report*, June 1997.
- Lilburn Corporation, *Sunwest Materials, Santa Ana Wash Development Agreement, Draft Environmental Impact Report*, May 1997.