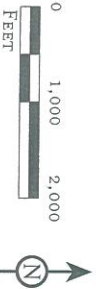


LSA

FIGURE 1

PROJECT BOUNDARY



SOURCE: USGS 7.5 Quad: Yucaipa, Redlands, Keller Peak and Harrison Mountain, CA.; Thomas Bros., 2001
R:\SBW330\grs\Cultural\veg_loc9.mxd (7/1/05)

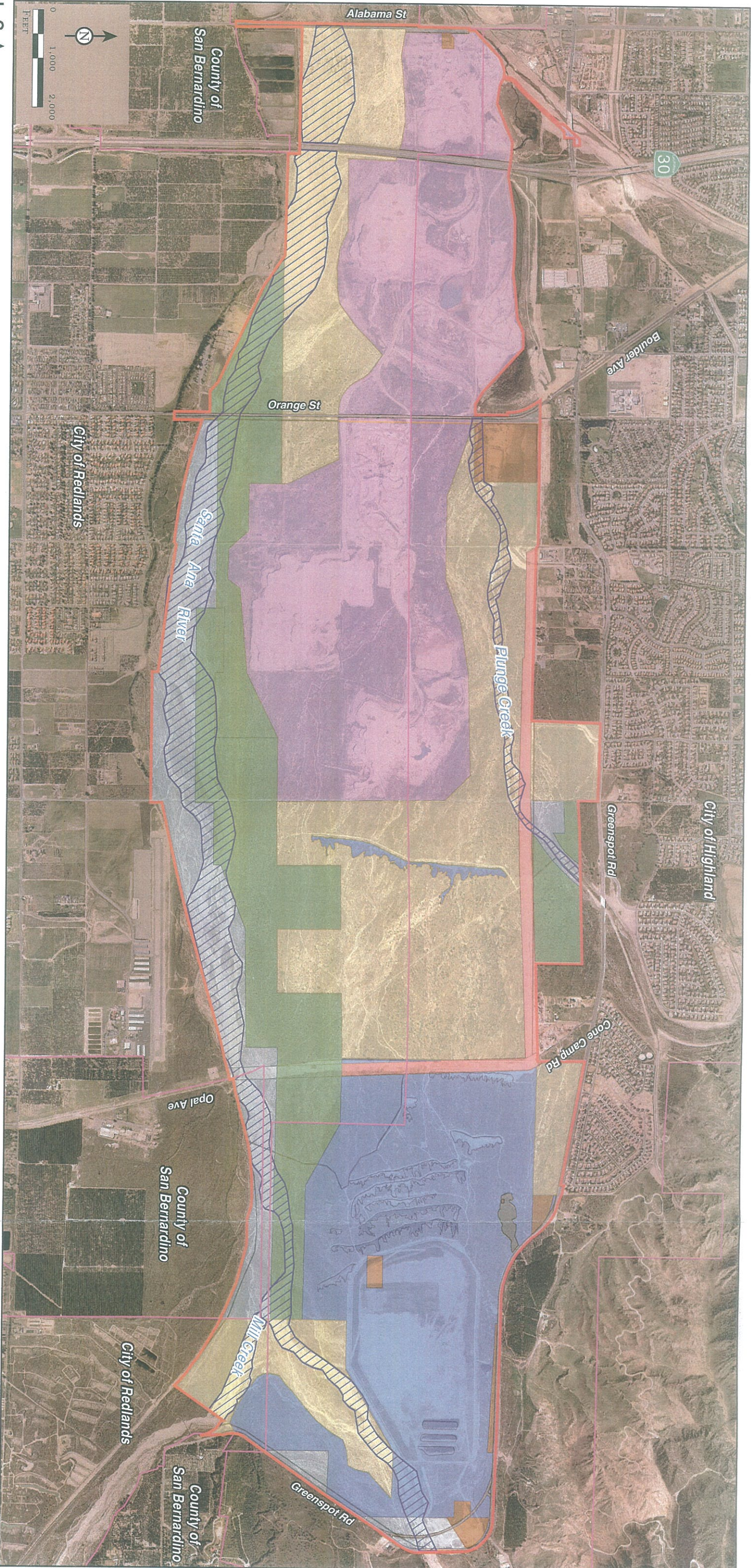
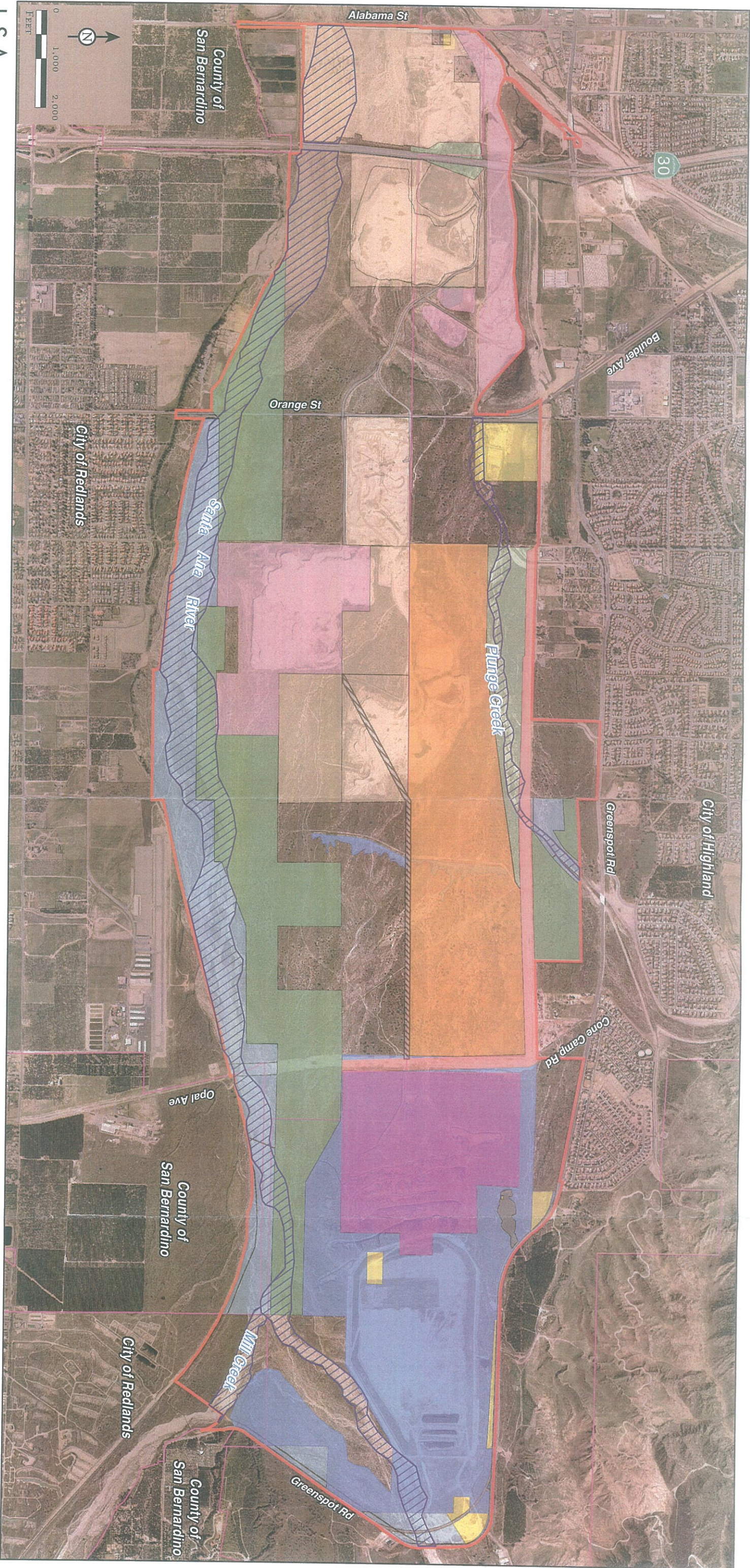


FIGURE 2



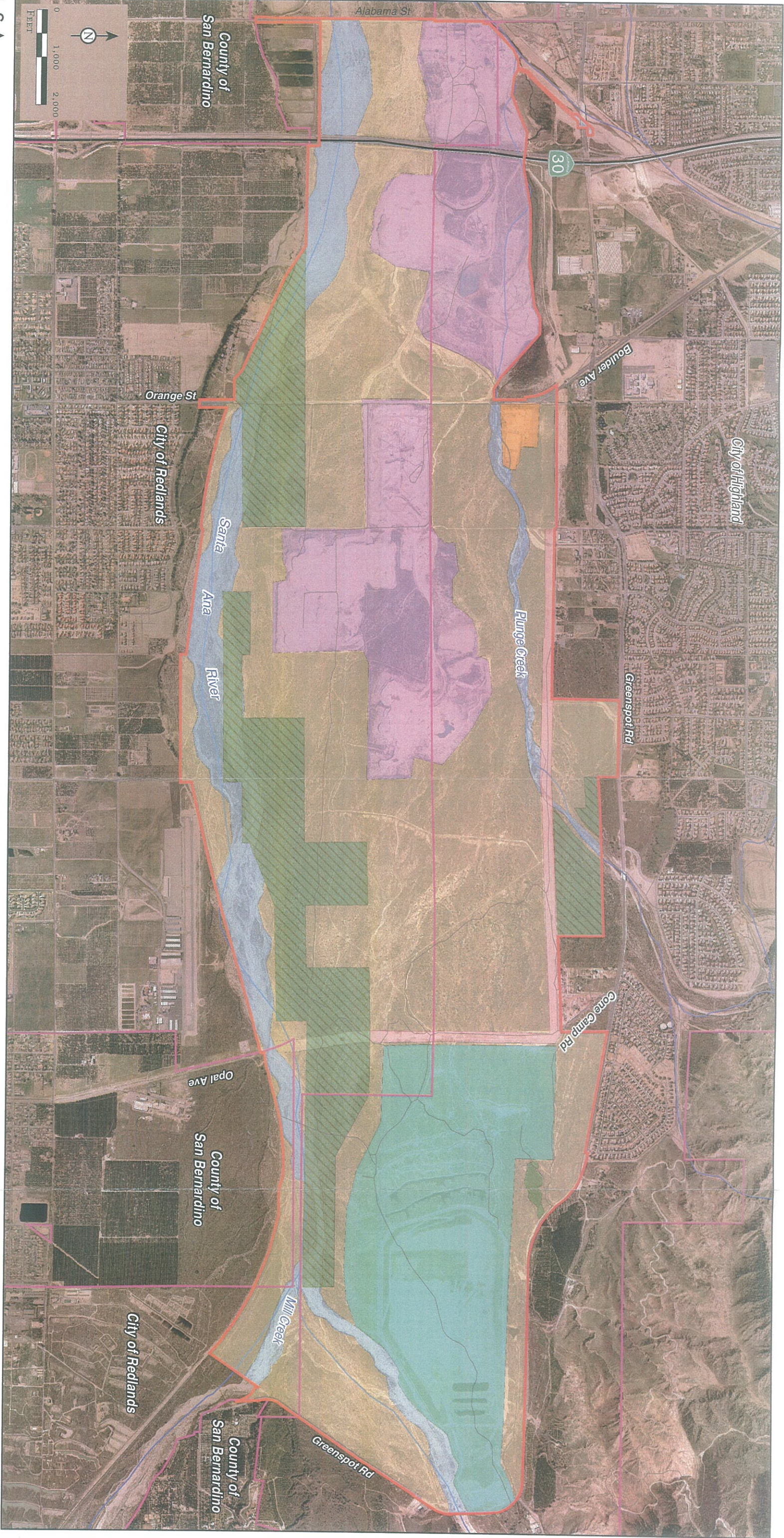
LSA



- UPPER SANTA ANA WASH LAND MANAGEMENT AREA
- JURISDICTIONAL BOUNDARY
- WOOLLY STAR PRESERVE
- OPEN SPACE
- MANAGED FLOOD CONTROL AREAS, CHANNEL LOCATIONS ARE REPRESENTATIONAL (SECONDARY USE)
- WATER CONSERVATION
- FLOOD CONTROL
- AREA NOT A PART
- DEVELOPED AND PAVED ROADS
- UTILITY EASEMENT (MWD AND EDISON)
- ROBERTSON'S EXISTING AND PROPOSED
- ROBERTSON'S EXISTING CONE CAMP QUARRY
- ROBERTSON'S EXISTING FACILITIES
- EXISTING HAUL ROAD
- PROPOSED HAUL ROAD
- CEMEX EXISTING AND PROPOSED
- CEMEX EXISTING FACILITIES
- LANDSCAPE PLAN FOR SR 30
- CEMEX HABITAT PRESERVE
- PROPOSED ORANGE STREET QUARRY
- CEMEX HAUL ROAD AND PROPOSED SLURRY LINE

SOURCES: SAN BERNARDINO WATER CONSERVATION DISTRICT, DUDEK; EAGLE AERIAL, 2004
R:\SBW330\gis\CulturalCul_resources_Alt2.mxd (7/1/05)

FIGURE 3



LSA

- | | | |
|--|--|--|
|  UPPER SANTA ANA WASH LAND MANAGEMENT AREA |  MINING |  ROADWAYS |
|  JURISDICTIONAL BOUNDARY |  WATER CONSERVATION |  UTILITY EASEMENT (EDISONMWD) |
|  OPEN SPACE |  WOOLLY STAR PRESERVE | |
|  WATERWAYS/FLOOD CONTROL* |  FARM LAND | |
| |  SHOOTING RANGE | |

SOURCE: SBV WATER CONSERVATION DISTRICT; SAN BERNARDINO COUNTY; EAGLE AERIAL, 2004
*SANTA ANA RIVER, MILL CREEK & PLUNGE CREEK ARE REPRESENTATIONAL
ONLY. PRECISE LOCATIONS ARE NOT DELINEATED.

R:\SBV\330\gis\Cultural\cult_existinglanduse9.mxd (7/1/05)

FIGURE 4