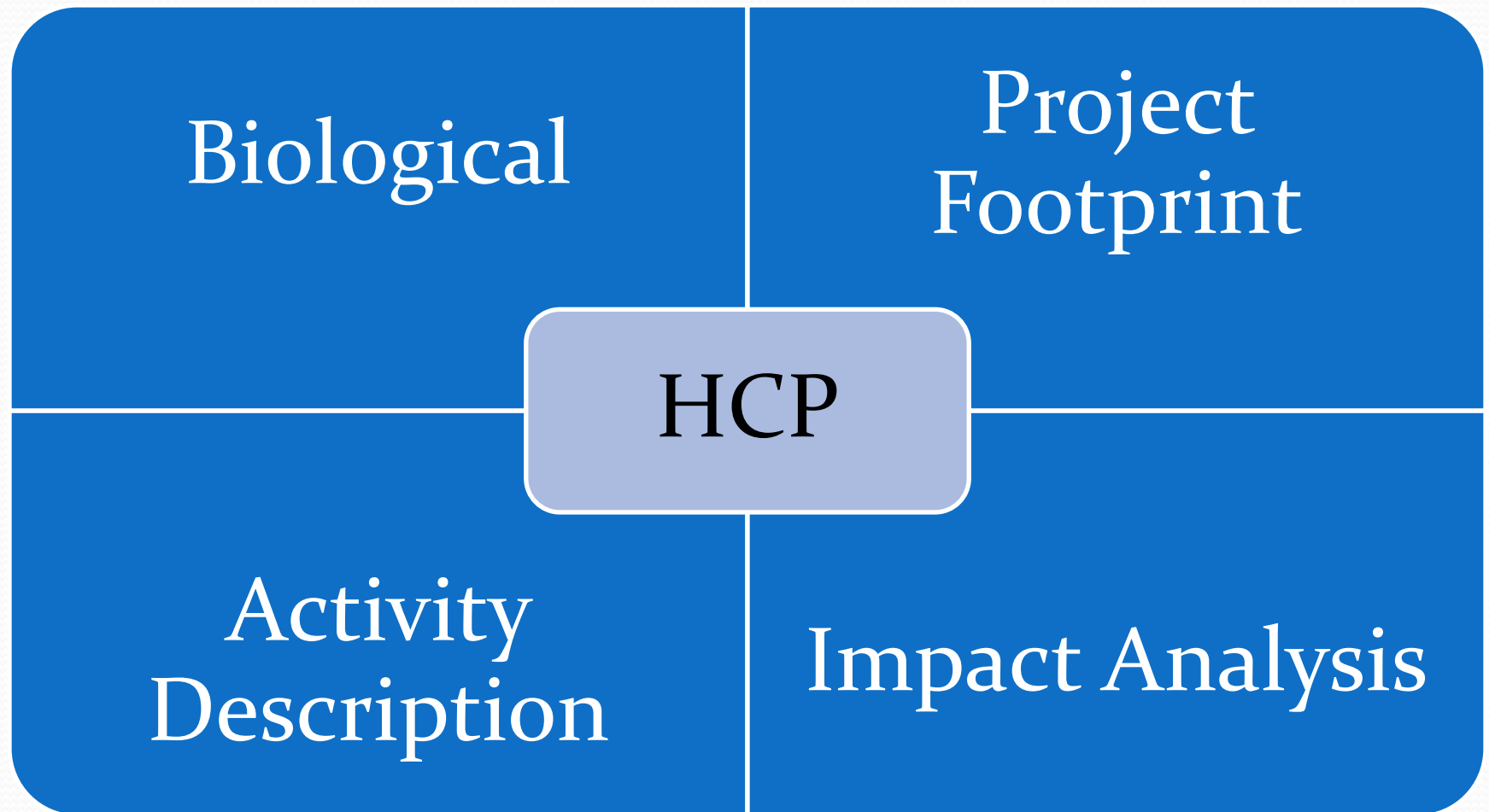


UPPER SANTA ANA RIVER WASH LAND MANAGEMENT & HABITAT CONSERVATION PLAN TASK FORCE

JUNE 4, 2014

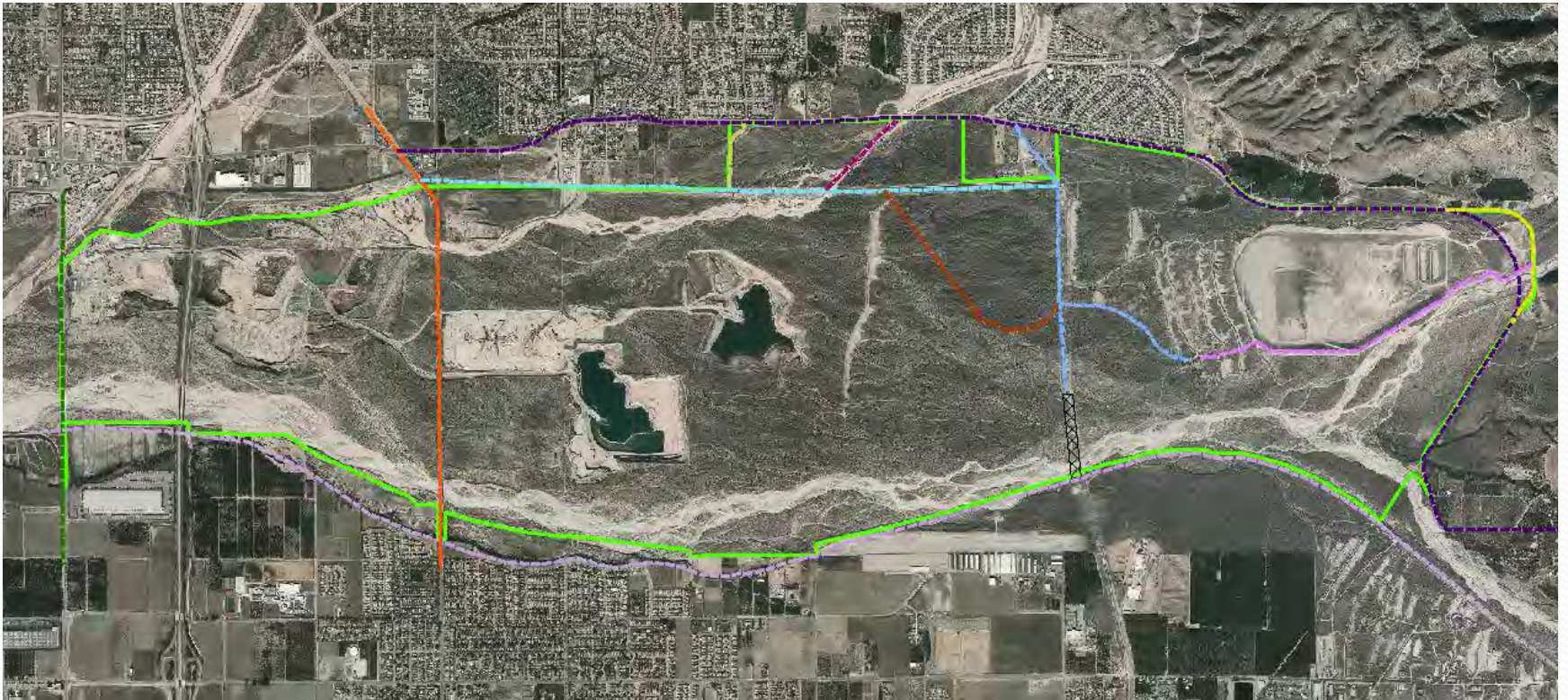
HCP Development



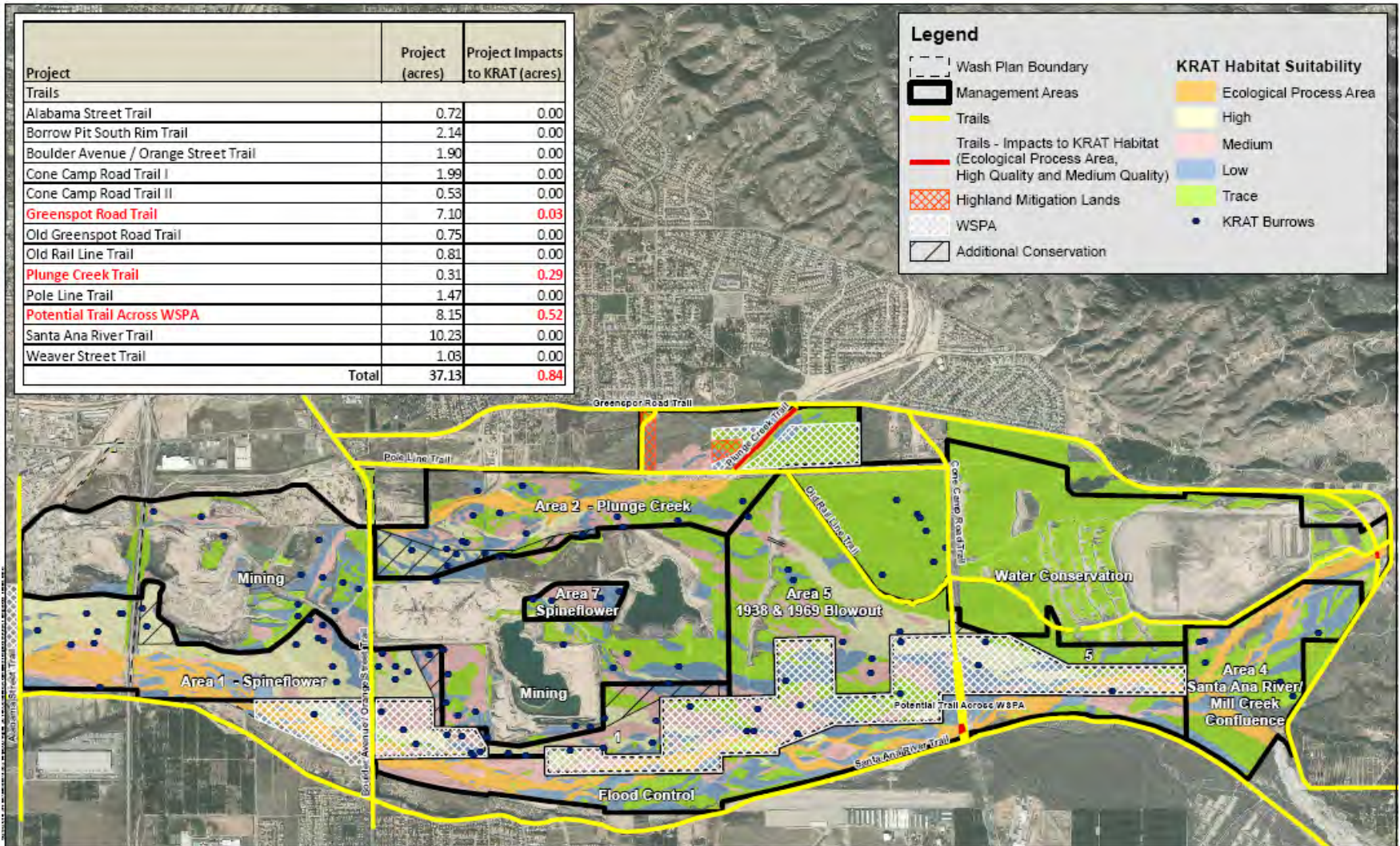
FINAL COVERED ACTIVITIES AND DRAFT SPECIES IMPACT ESTIMATES

RECOMMENDATION: Direct Task Force member staff to provide comments to District by June 14

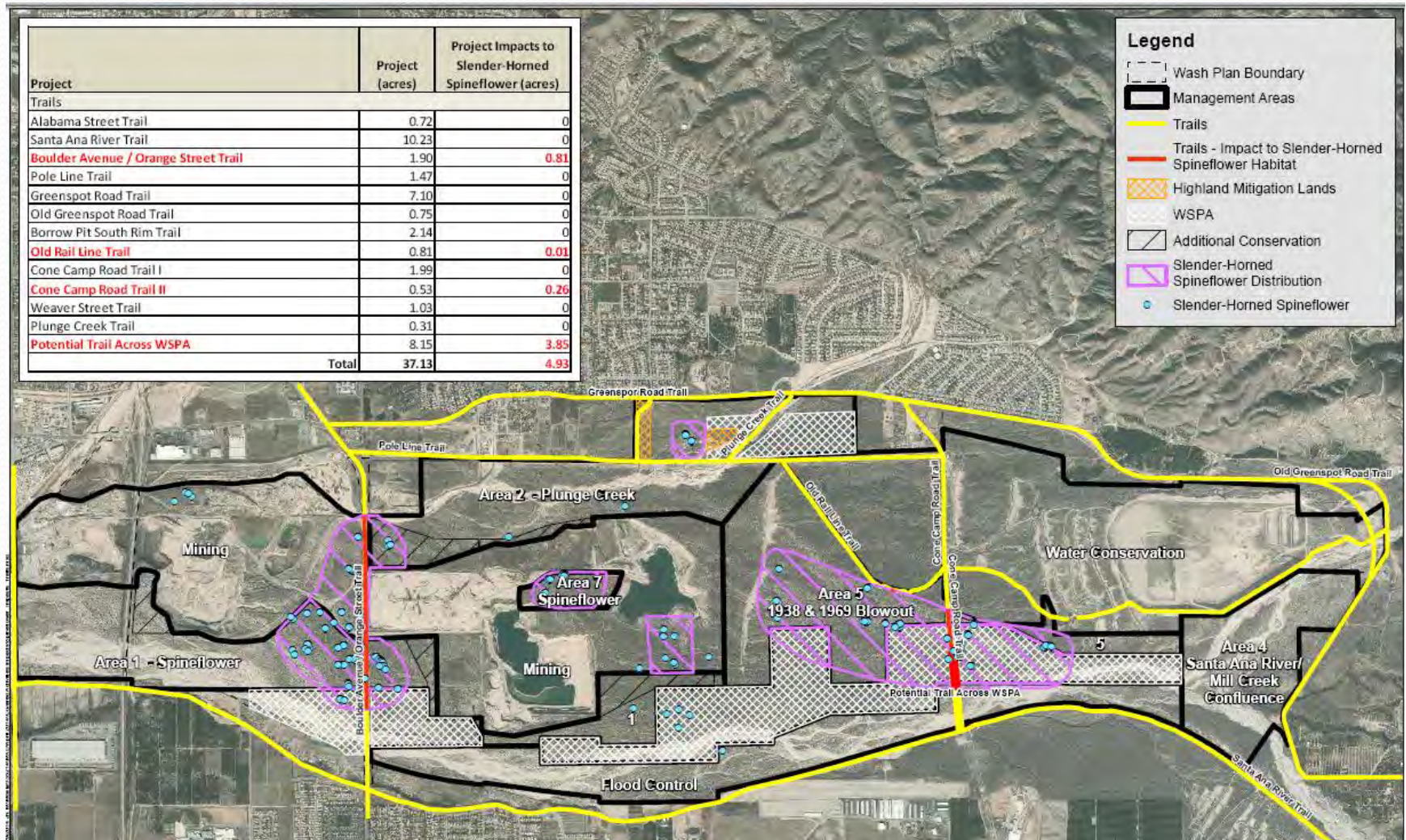
TRAILS



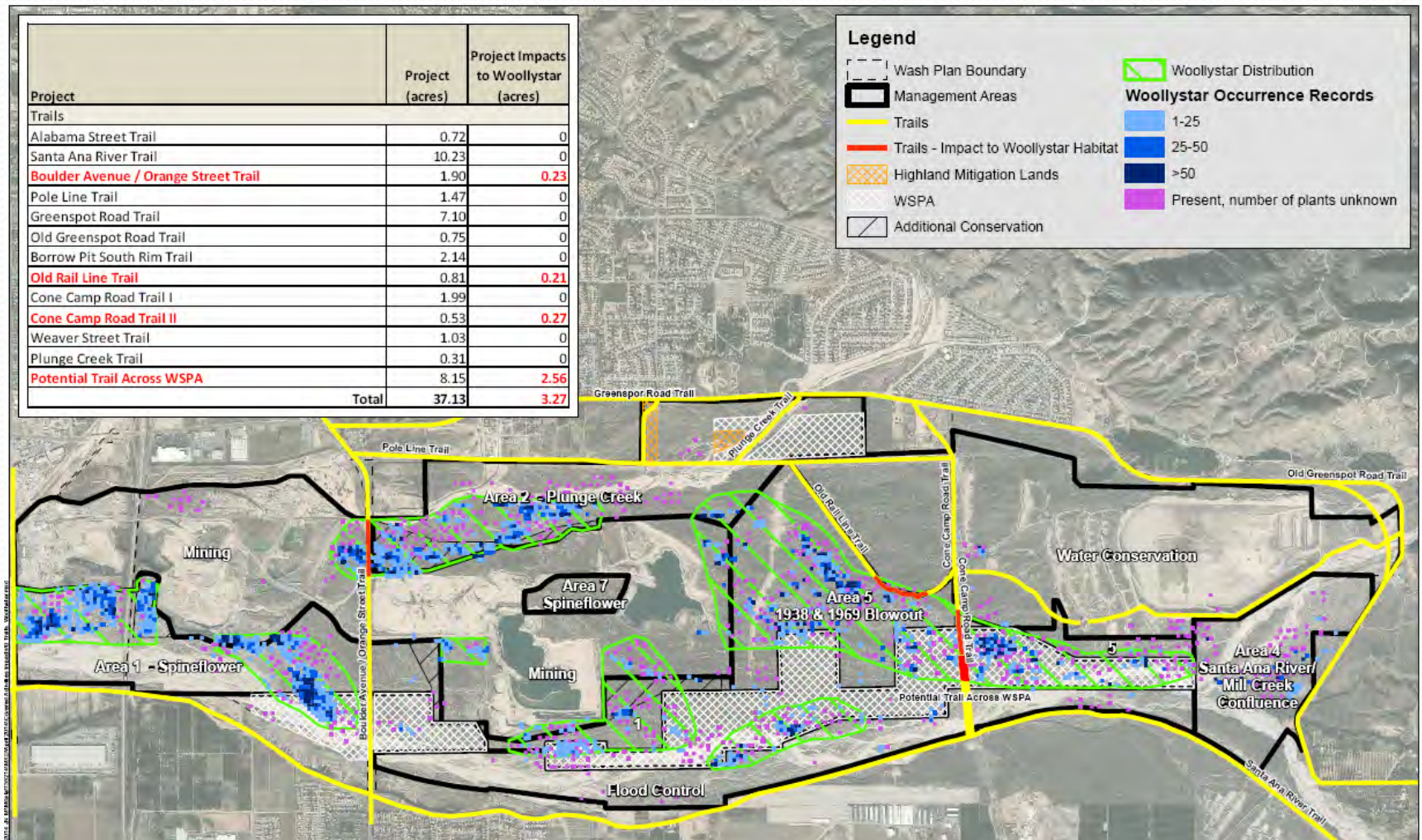
TRAILS: KRAT HABITAT IMPACT



TRAILS: SLENDER HORNED SPINEFLOWER HABITAT IMPACT



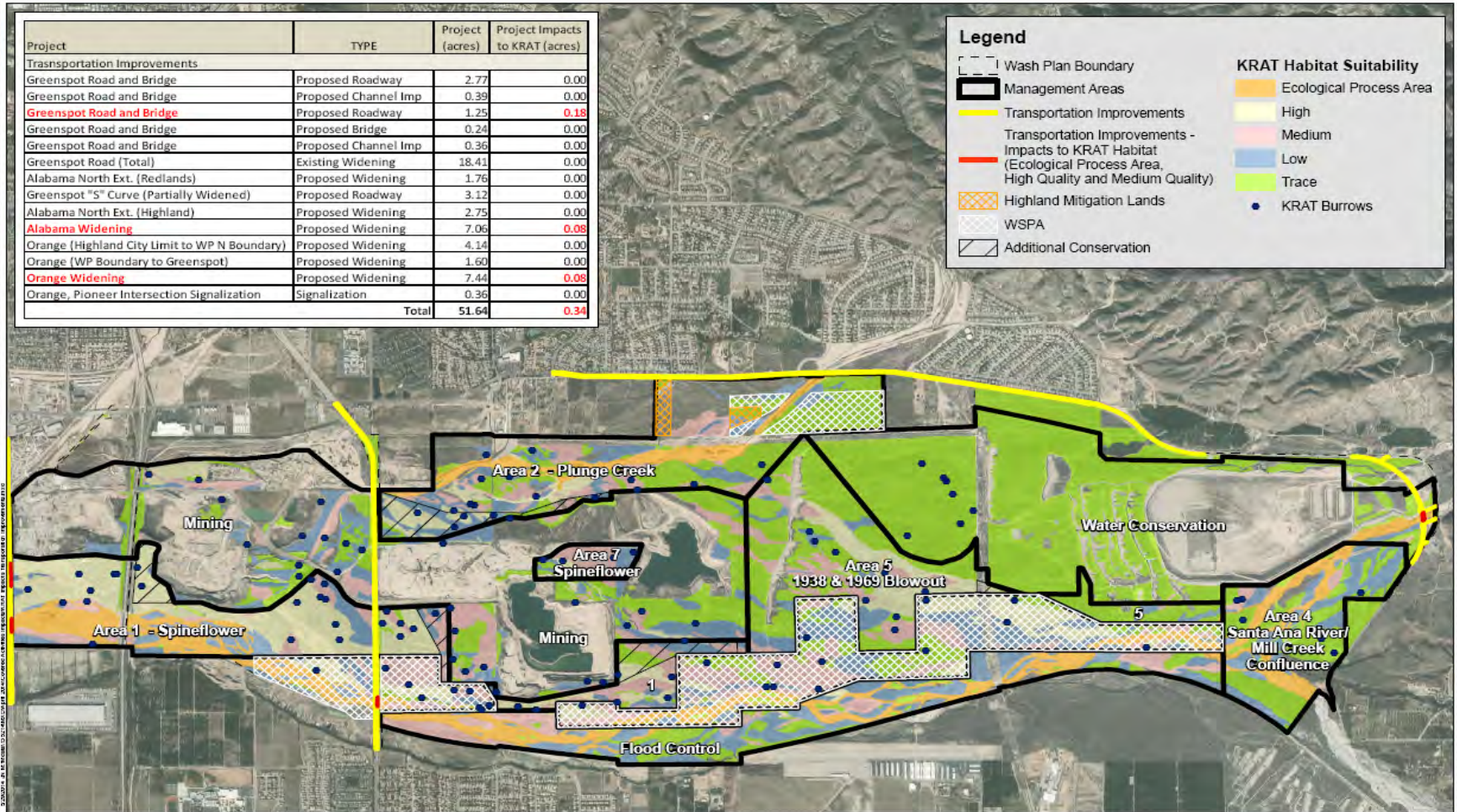
TRAILS: WOOLLYSTAR HABITAT IMPACT



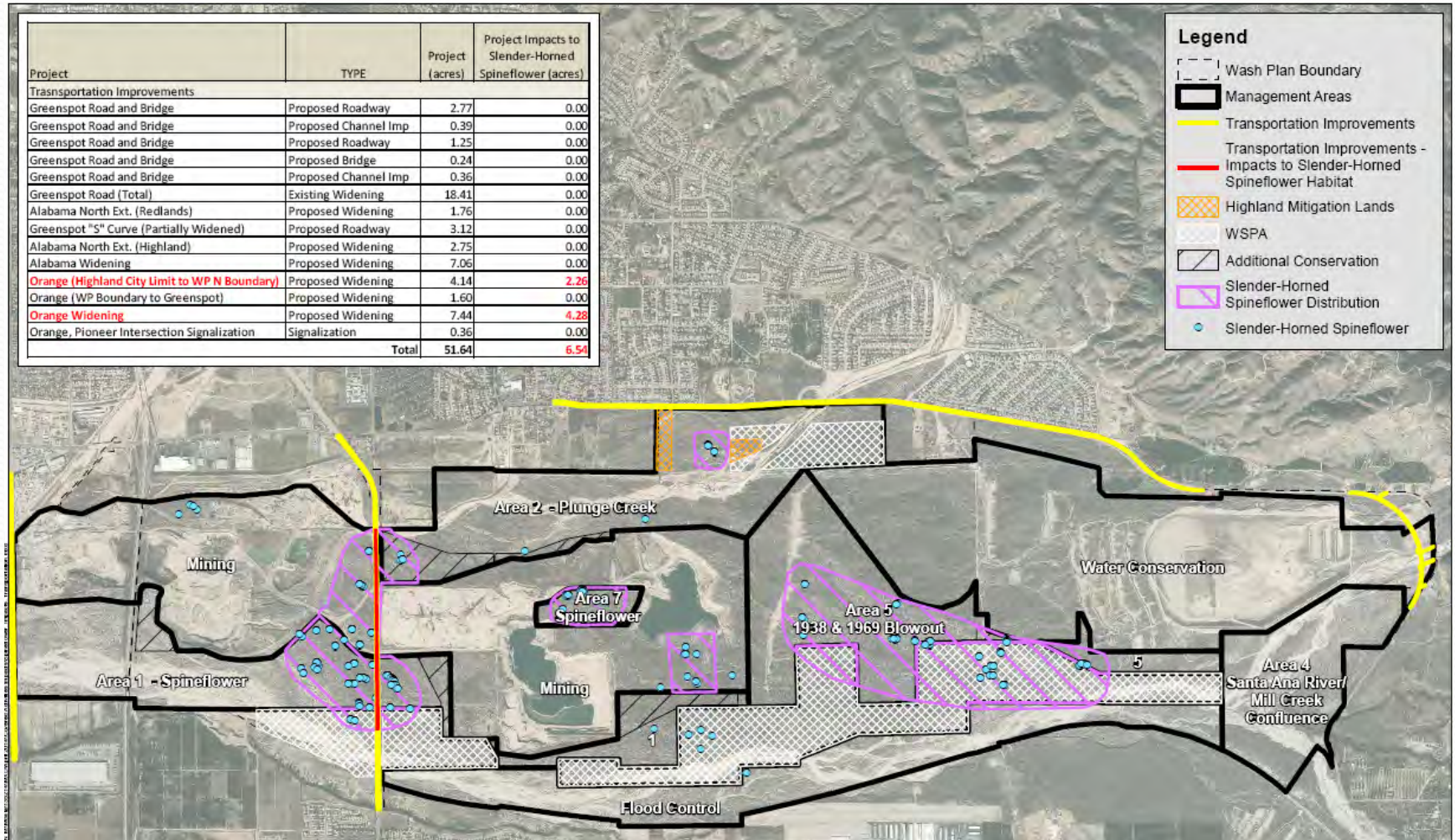
TRANSPORTATION IMPROVEMENTS



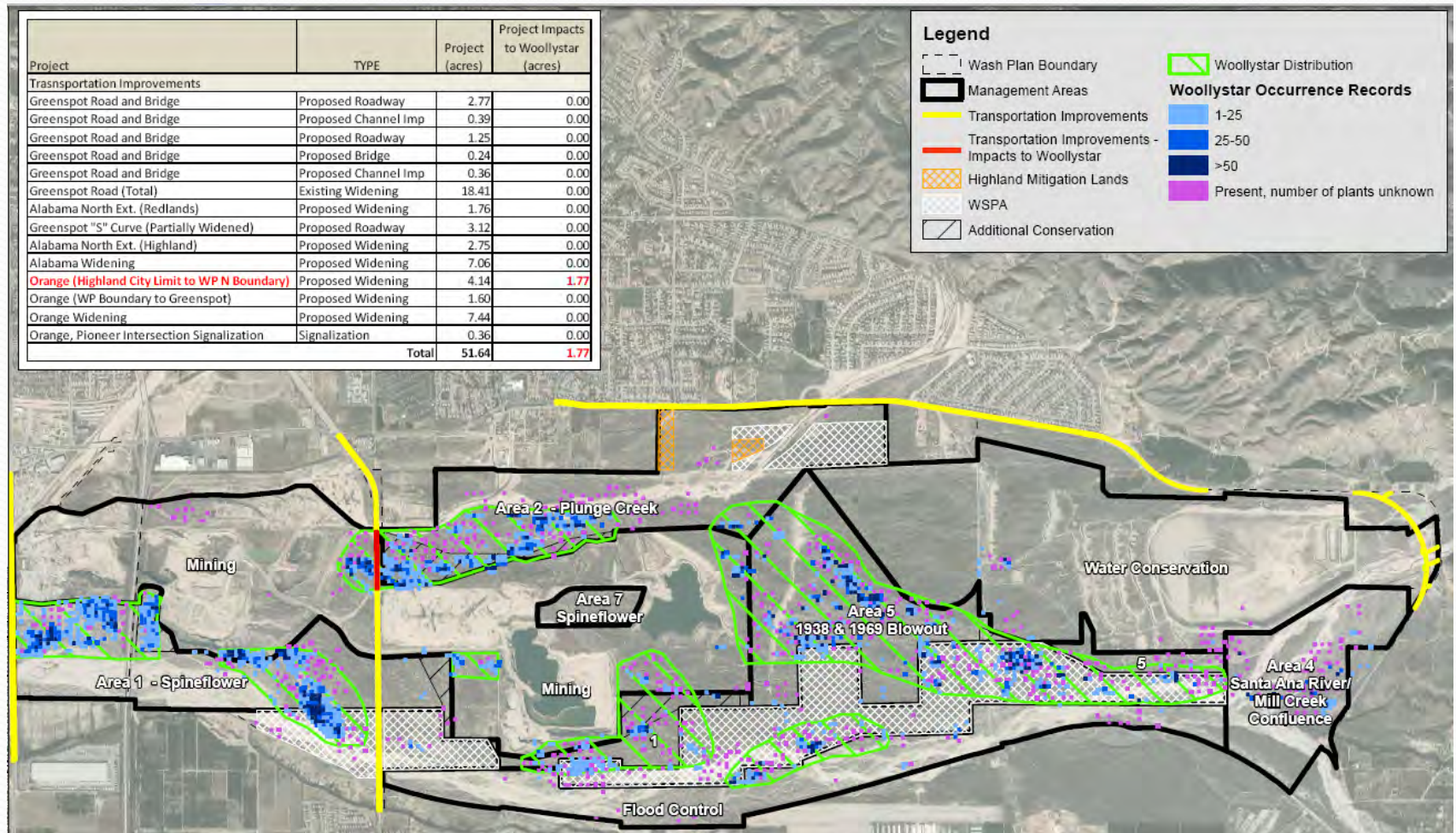
TRANSPORTATION IMPROVEMENTS: KRAT HABITAT IMPACT



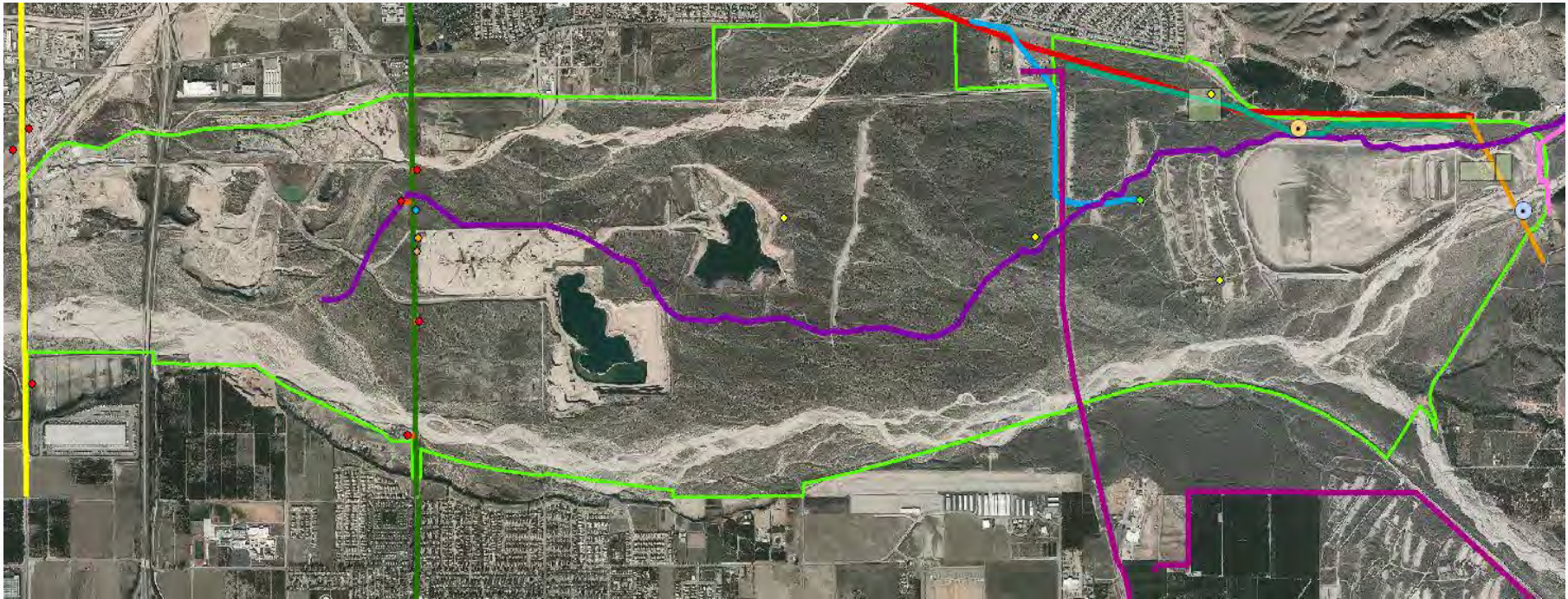
TRANSPORTATION IMPROVEMENTS: SLENDER HORNED SPINEFLOWER HABITAT IMPACT



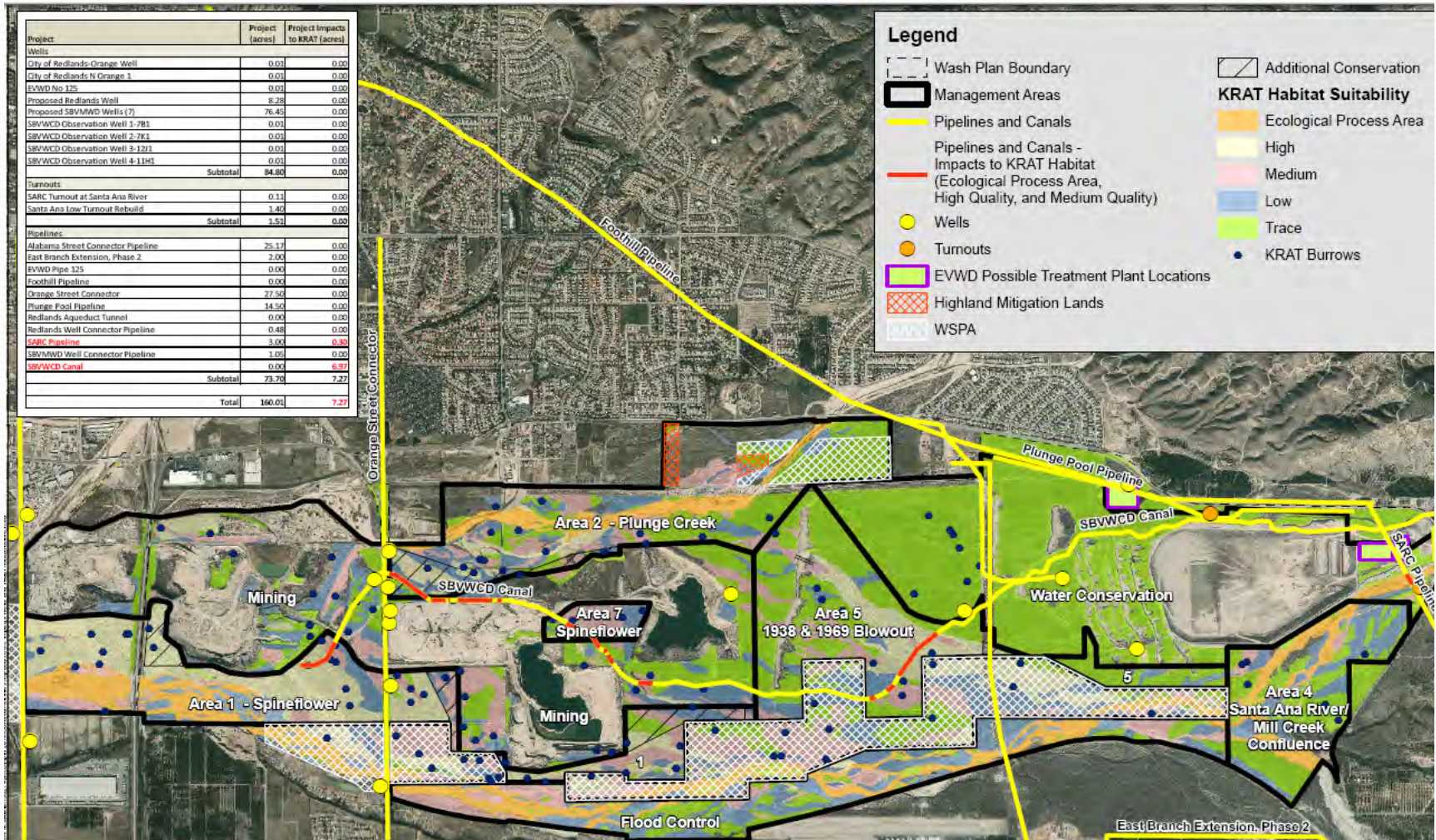
TRANSPORTATION IMPROVEMENTS: WOOLLYSTAR HABITAT IMPACT



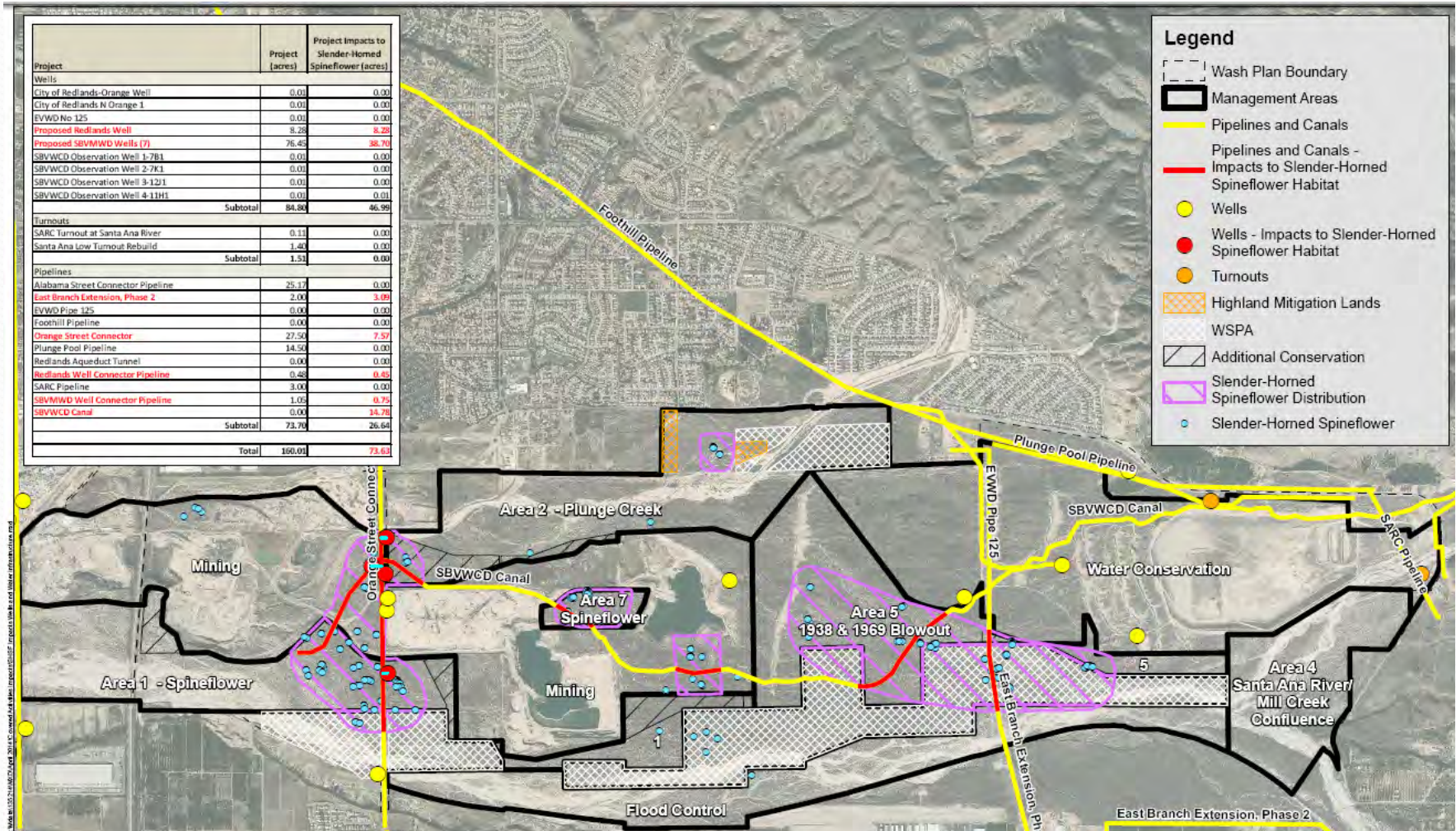
WELLS AND WATER INFRASTRUCTURE



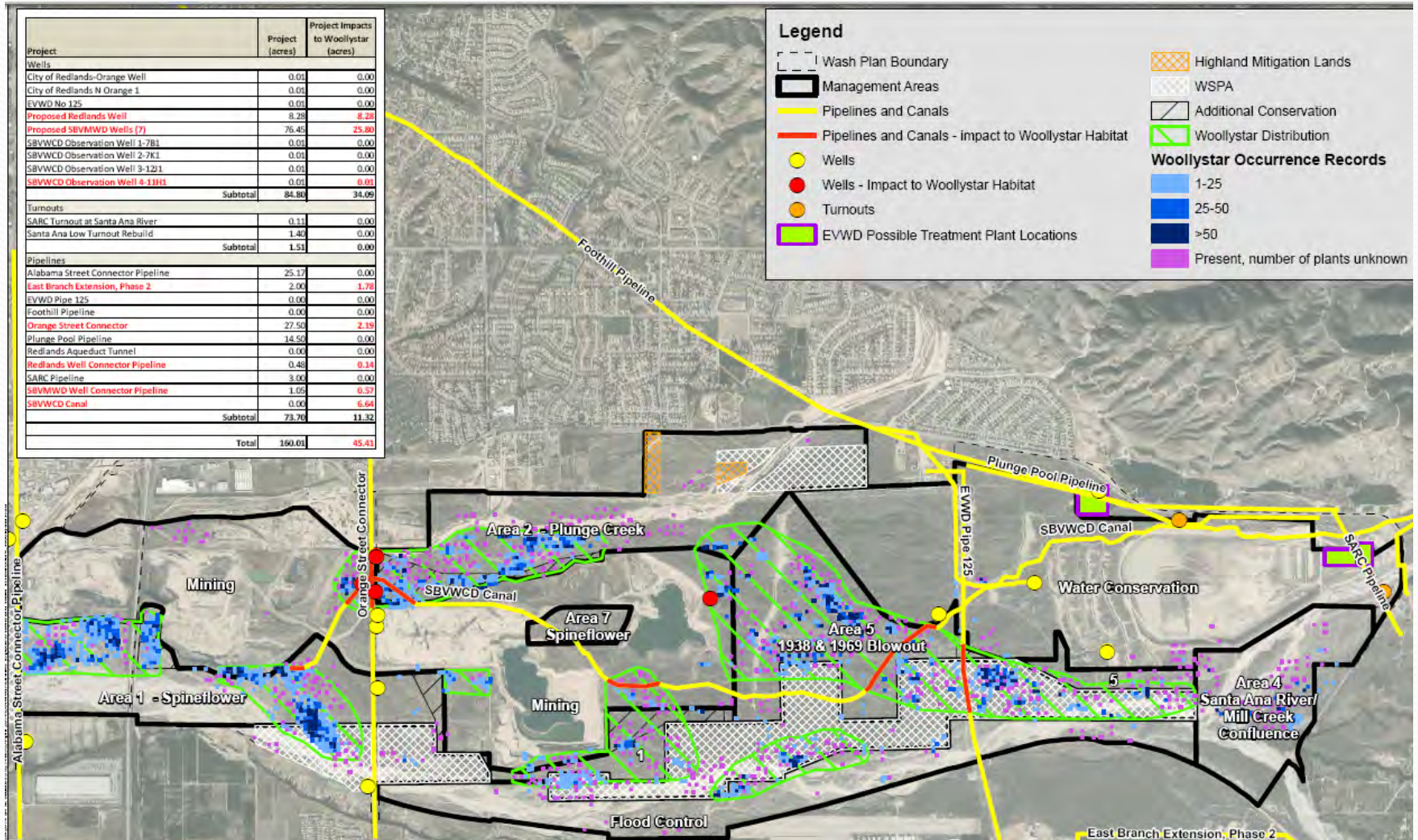
WELLS AND WATER INFRASTRUCTURE: KRAT HABITAT IMPACT



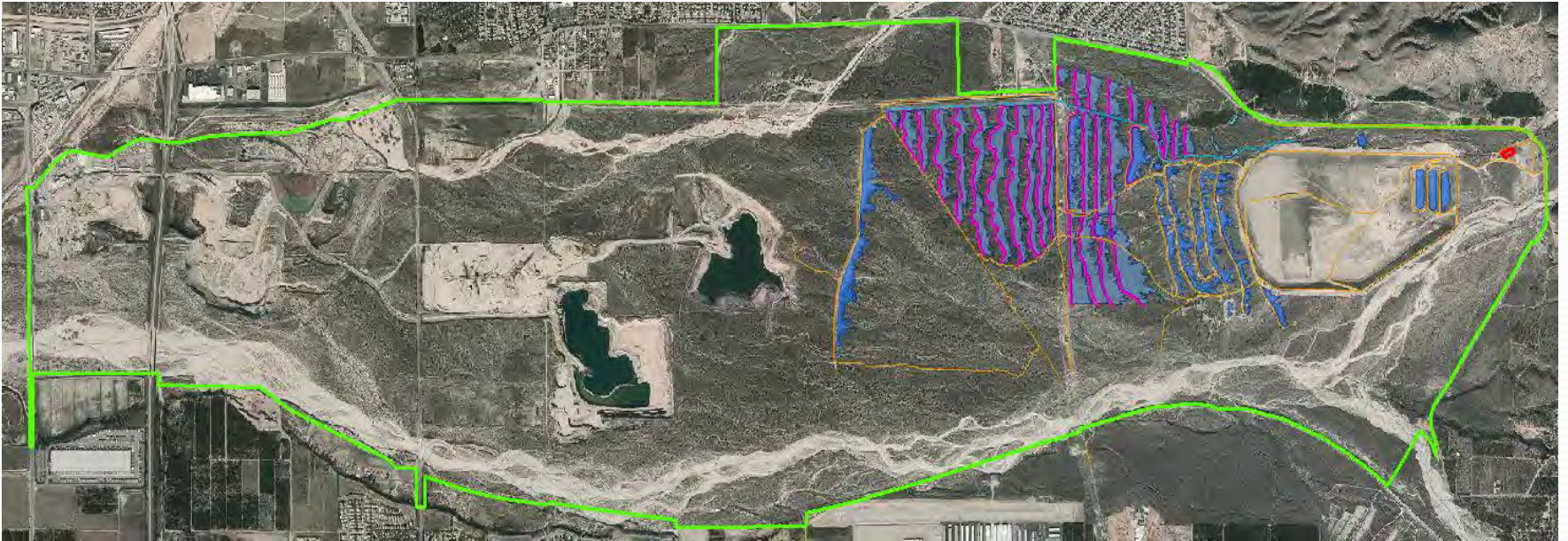
WELLS AND WATER INFRASTRUCTURE: SLENDER HORNED SPINEFLOWER HABITAT IMPACT



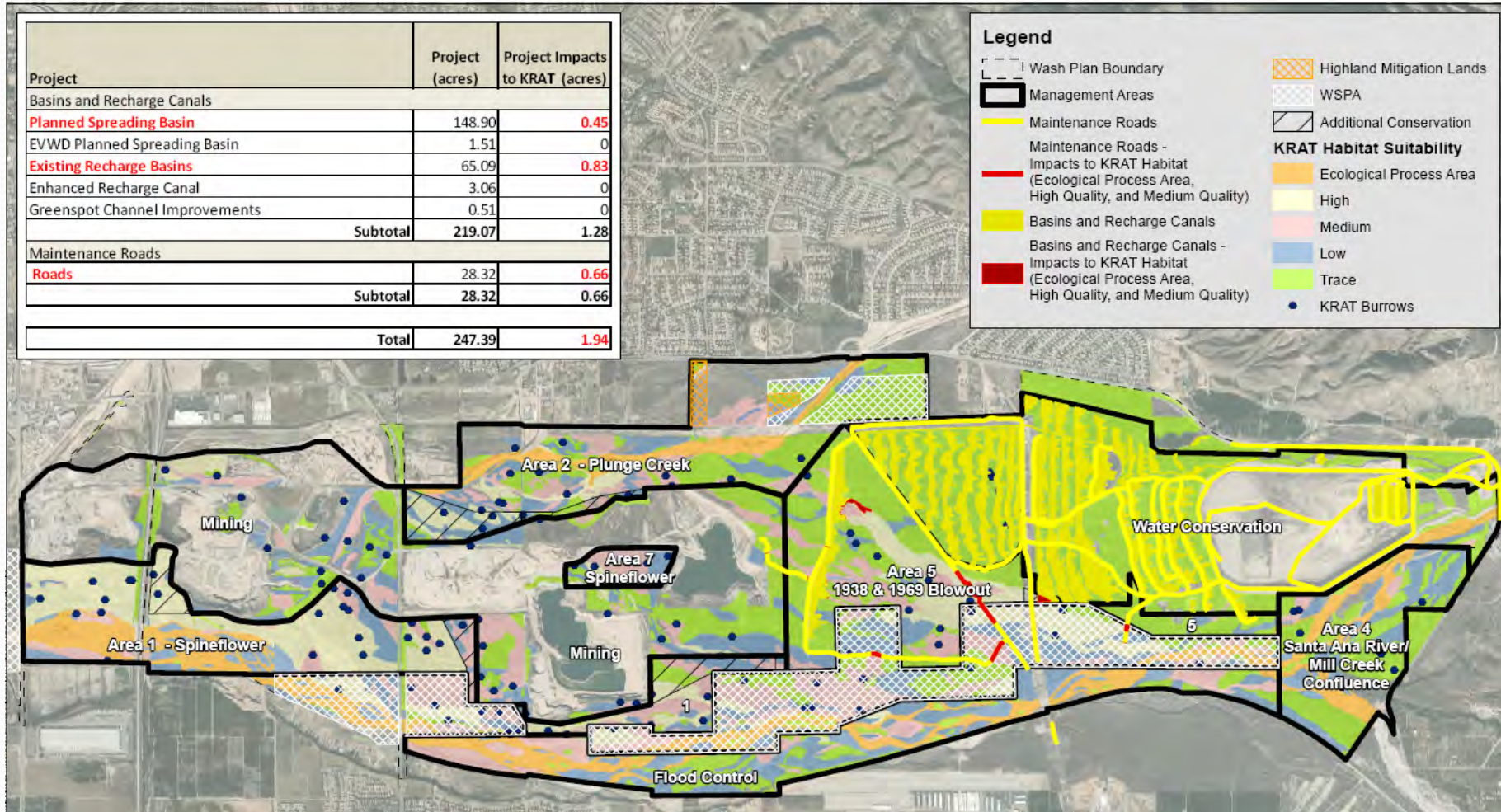
WELLS AND WATER INFRASTRUCTURE: WOOLLYSTAR HABITAT IMPACT



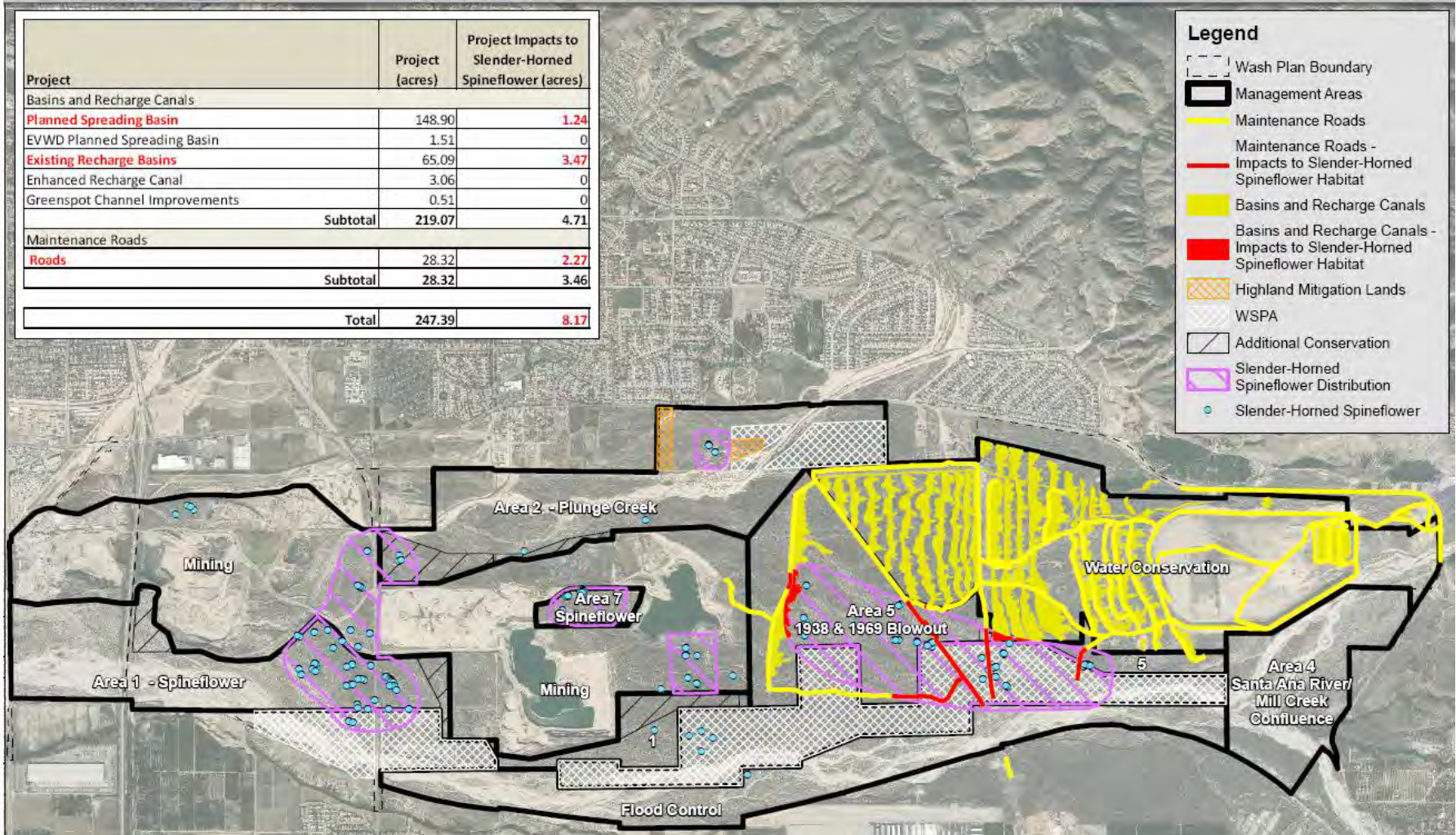
WATER CONSERVATION



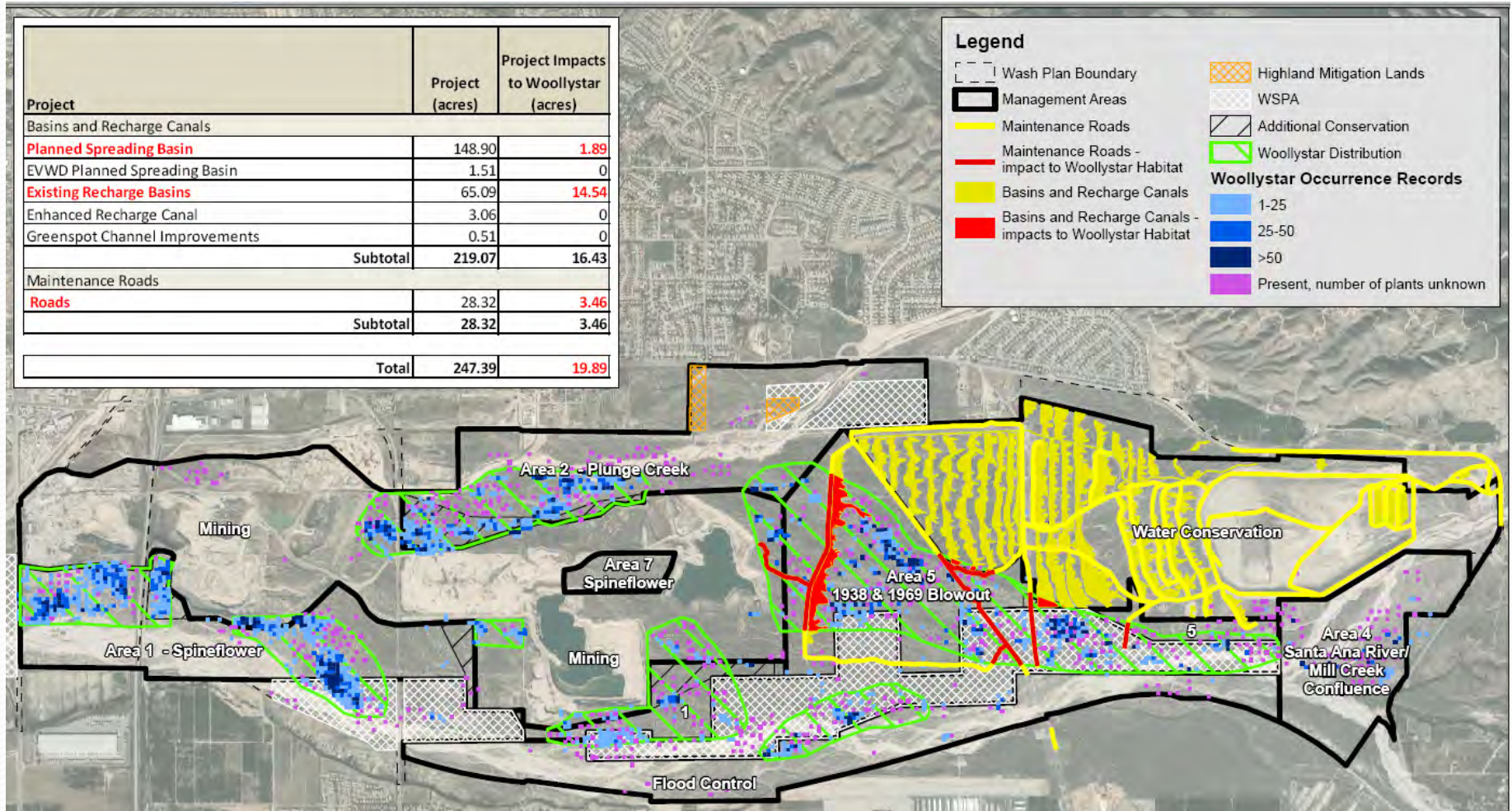
WATER CONSERVATION: KRAT HABITAT IMPACT



WATER CONSERVATION: SLENDER HORNED SPINEFLOWER HABITAT IMPACT



WATER CONSERVATION: WOOLLYSTAR HABITAT IMPACT

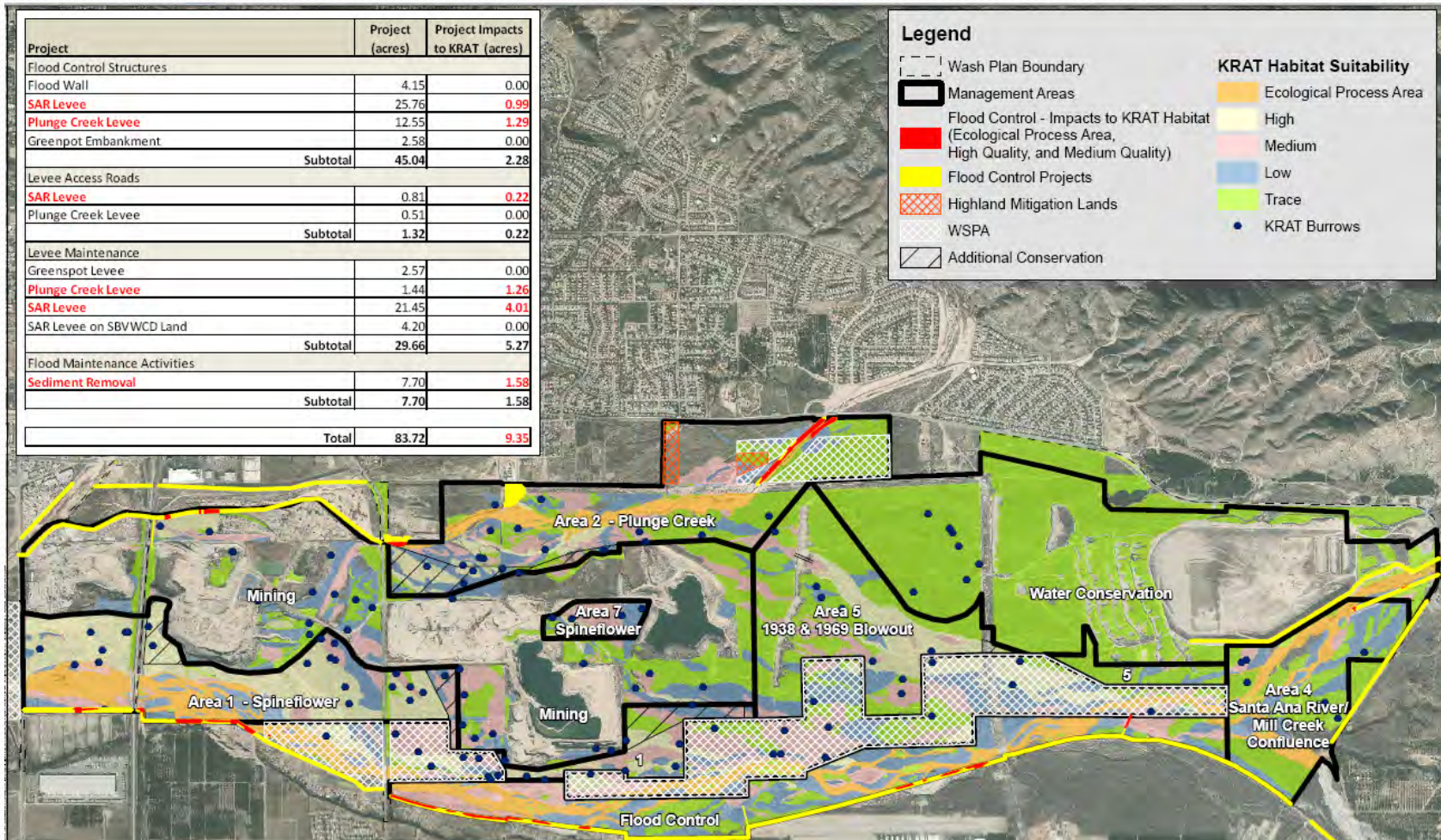


FLOOD CONTROL

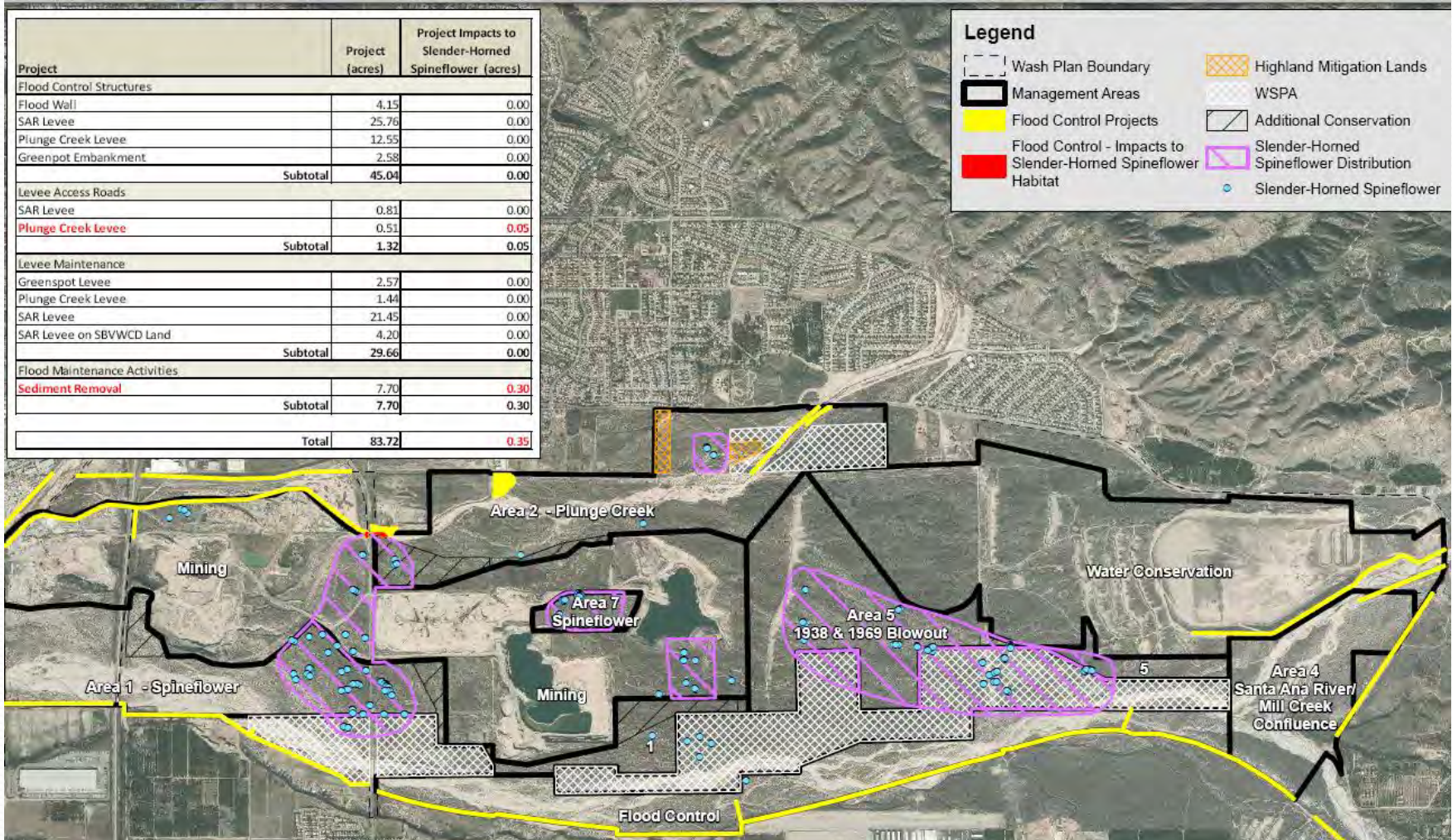


Analysis of Highland drainage impacts not complete

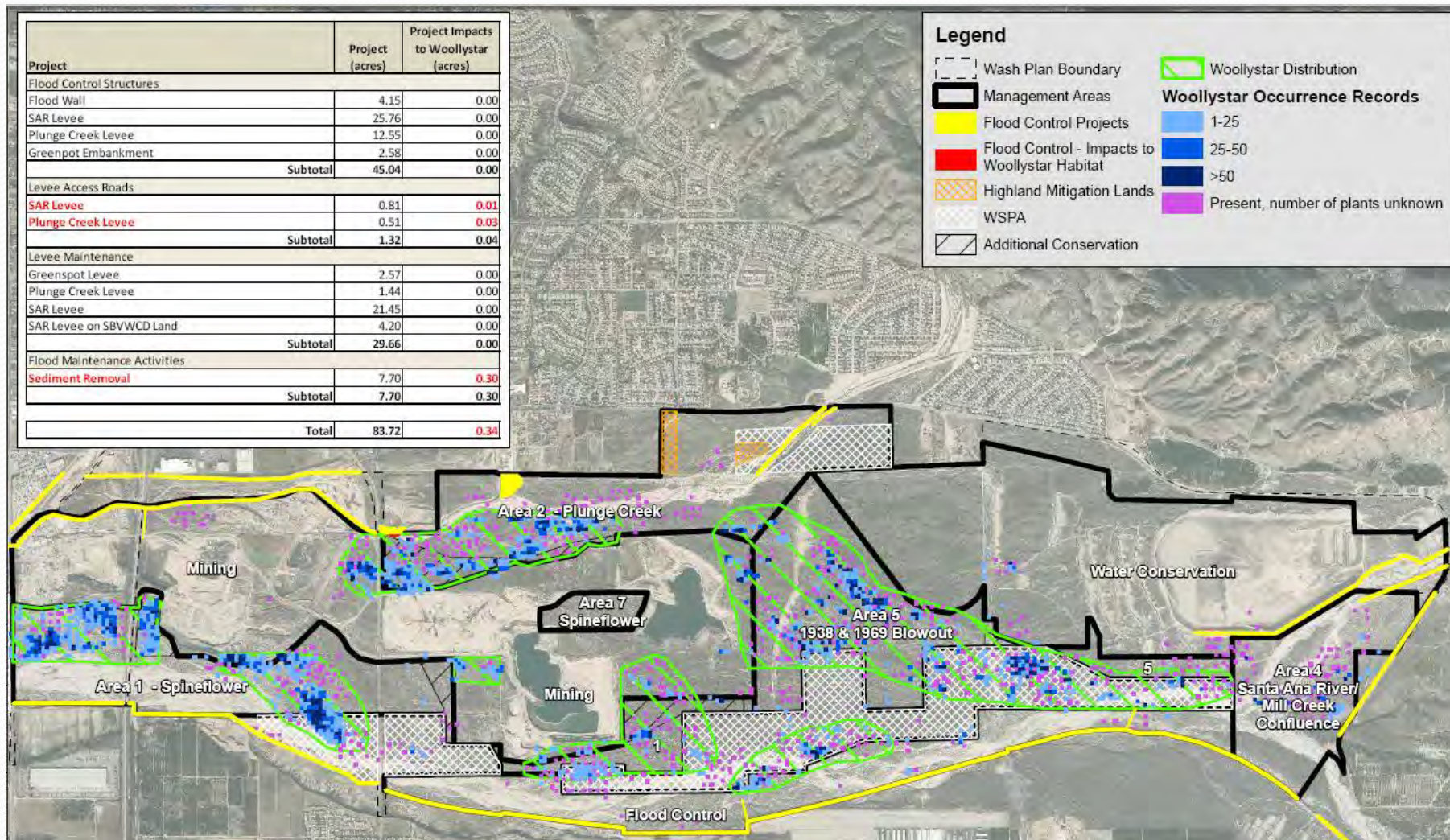
FLOOD CONTROL: KRAT HABITAT IMPACT



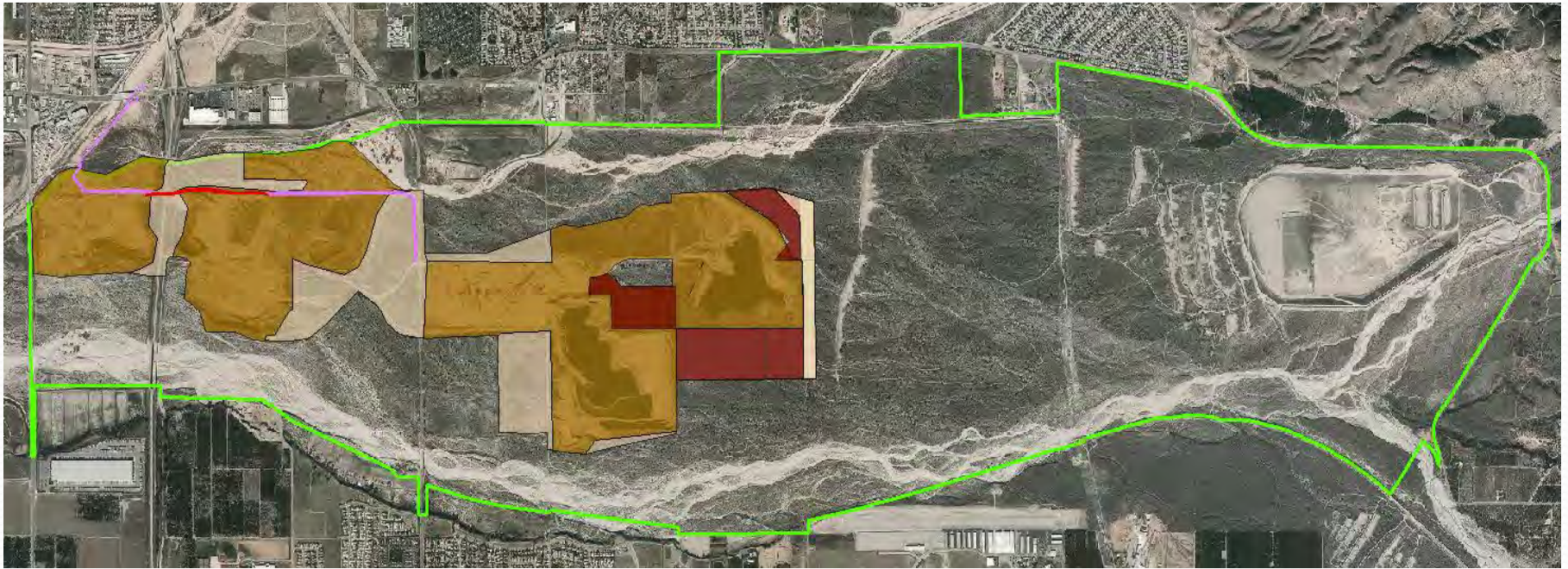
FLOOD CONTROL: SLENDER HORNED SPINEFLOWER HABITAT IMPACT



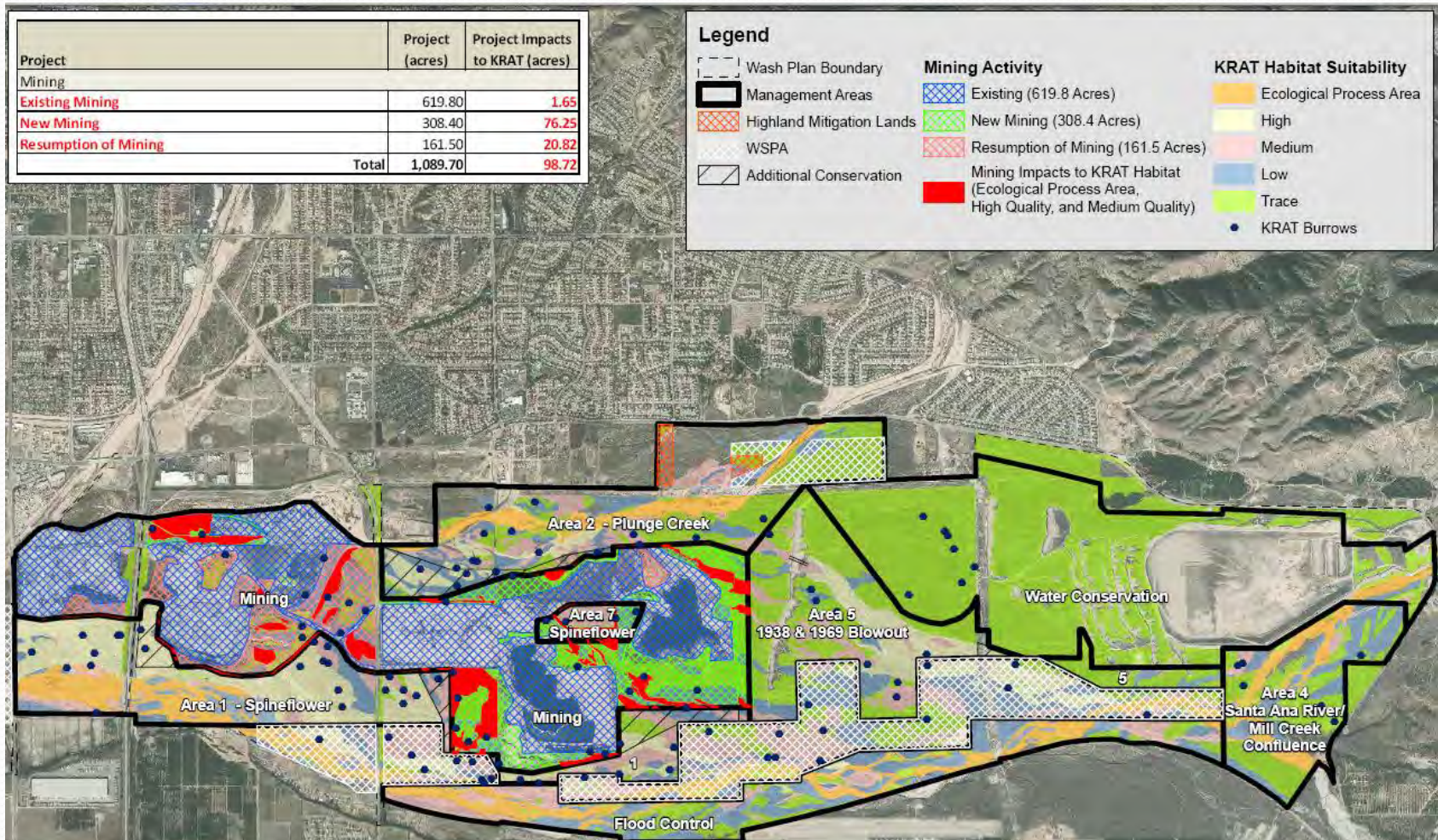
FLOOD CONTROL: WOOLLYSTAR HABITAT IMPACT



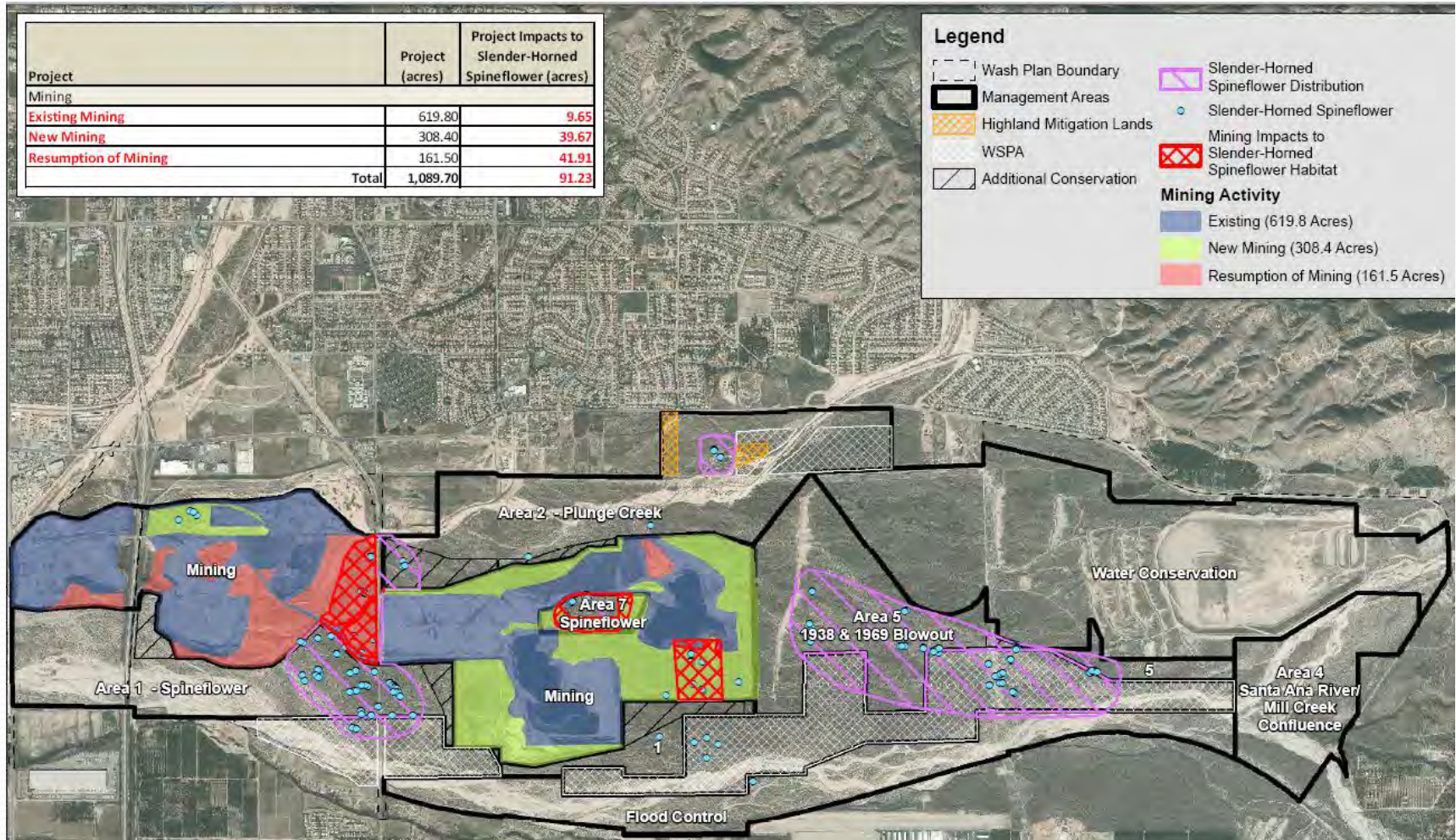
MINING



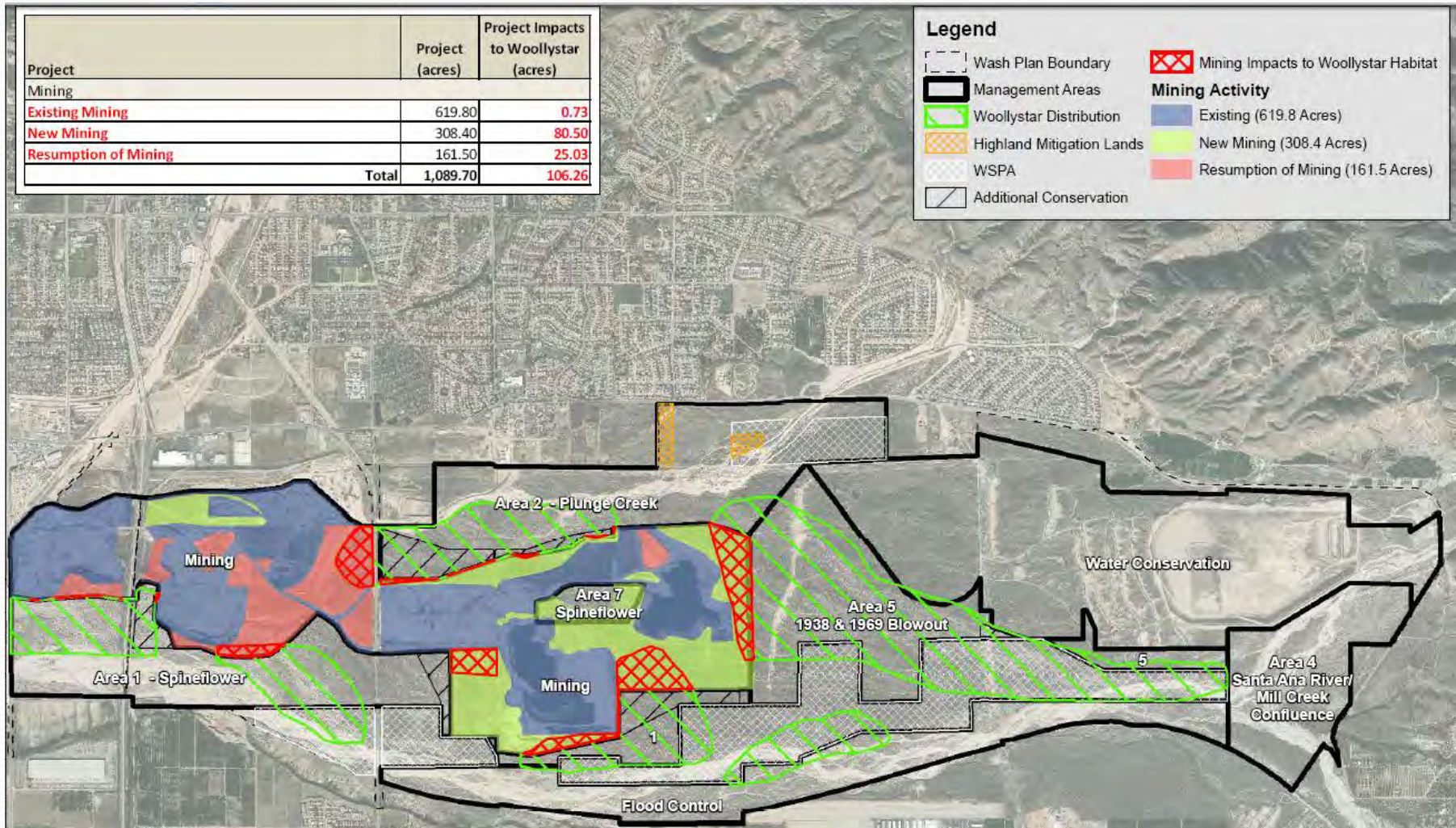
MINING: KRAT HABITAT IMPACT



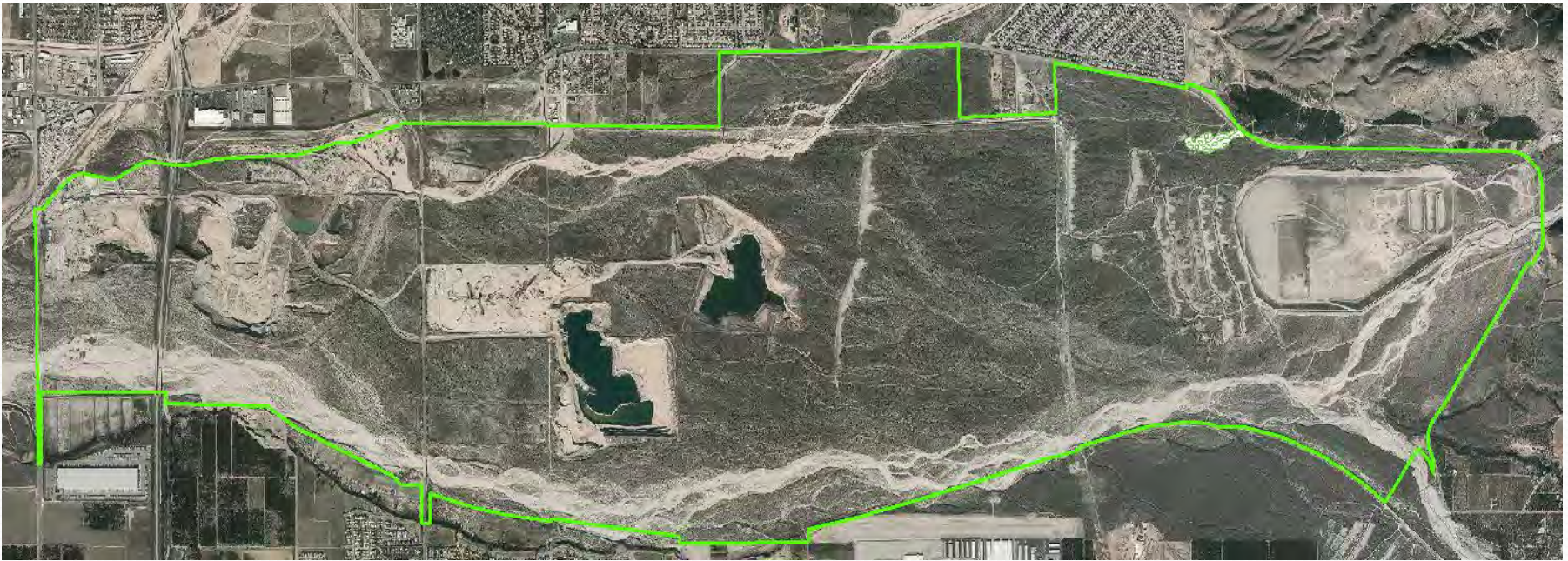
MINING: SLENDER HORNED SPINEFLOWER HABITAT IMPACT



MINING: WOOLLYSTAR HABITAT IMPACT



Misc. Impacts



Impacts Related to:

- Citrus grove management
- Enhancement and mitigation activities
 - Levee removal
 - Flow redirection (“sugar dikes”)
 - Trash removal/ access limitation
 - Vegetation management

HCP DEVELOPMENT

RECOMMENDATIONS: Consider adoption of biological goals and objectives and to direct staff to prepare draft HCP based on those goals; Establish a spineflower working group to provide input in HCP development; Add the Cactus Wren to species covered by the HCP; Authorize staff to assist Federal partners in the development and posting of a Public Notice for the preparation of environmental documents supporting the HCP, land exchange, and Plan amendment.



Goal

The goal of the Wash Plan Habitat Conservation Plan is to conserve and enhance populations of covered species in the plan area through land conservation and an adaptive habitat management program, to minimize and mitigate the effects of take and to meet specific Federal Endangered Species Act requirements.

Biological Objectives

- To conserve habitats in the Wash Plan area in a configuration and amount that will sustain populations of Federally-listed species, specifically the San Bernardino kangaroo rat, the slender horned spine flower, the Santa Ana River woolly star, and the California gnatcatcher, as well as the cactus wren and other special status species;
- To conserve habitat linkages across and to areas outside the Wash Plan area in order to provide connectivity between populations of covered species and provide opportunities for wildlife movement through the wash;

Biological Objectives

- To develop a robust, science based experimental program to address issues unique to the maintenance and enhancement of existing slender-horned spineflower populations and the potential establishment of new ones within the conserved areas of the Wash Plan area;
- To actively manage conserved lands within the Wash Plan area for the benefit of covered species, including control of non-native plant species, selective vegetation thinning, habitat enhancement;

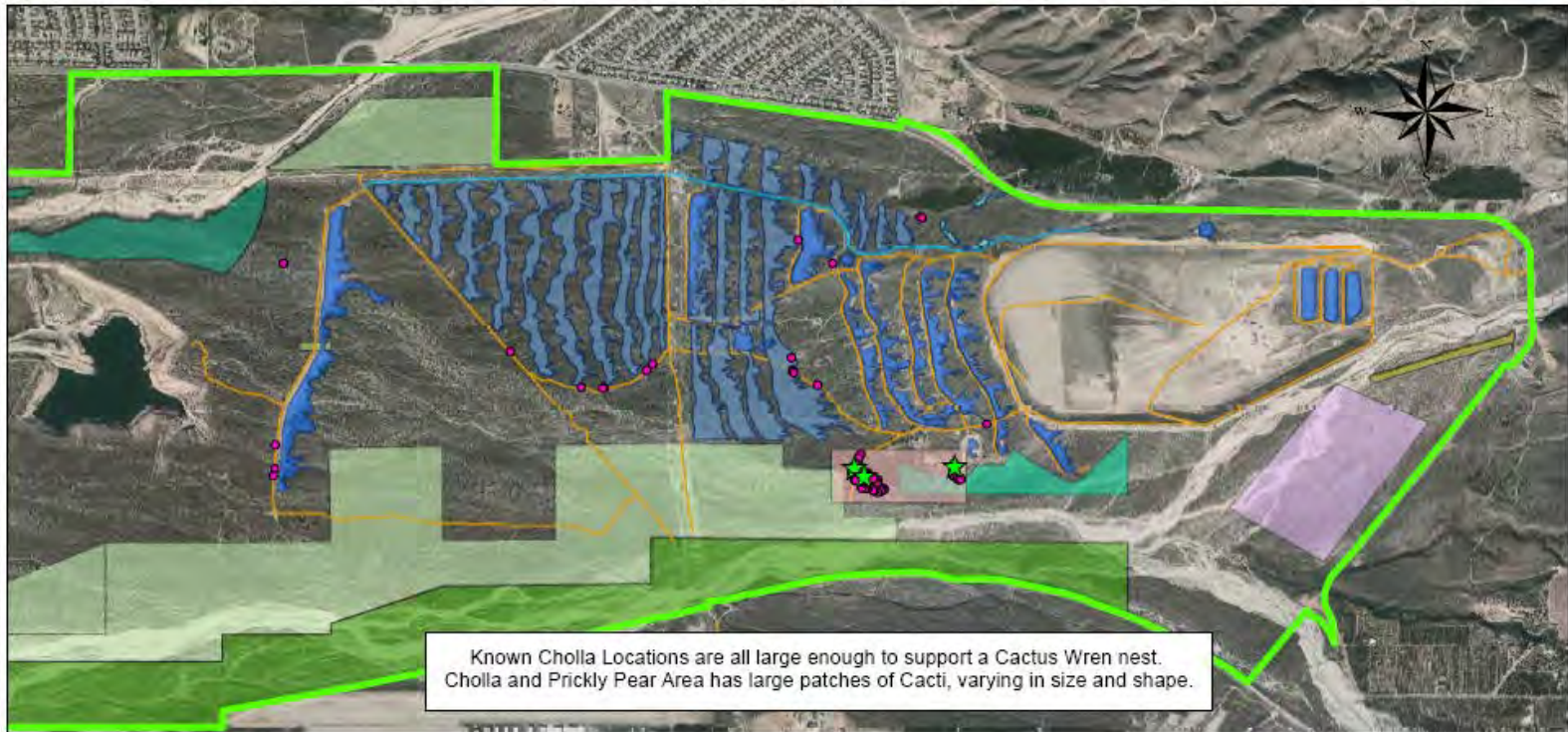
Biological Objectives

- To actively monitor covered species and their habitats, including status and trends and;
- To use an adaptive management approach to species and habitat management which will allow for adjustments to management prescriptions based on new information obtained as the management plan is implemented.

CACTUS WREN



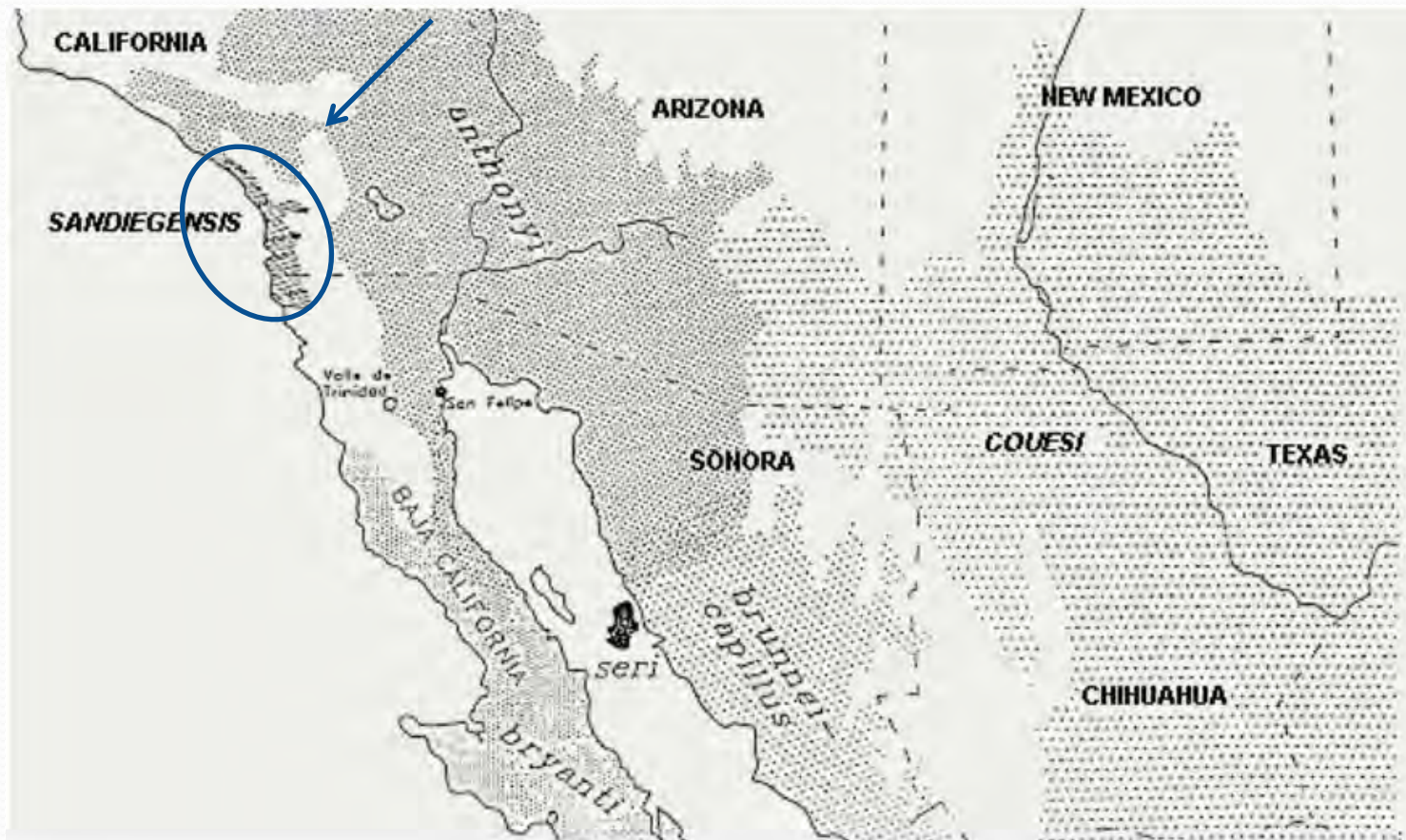
CACTUS WREN HABITAT LOCATIONS



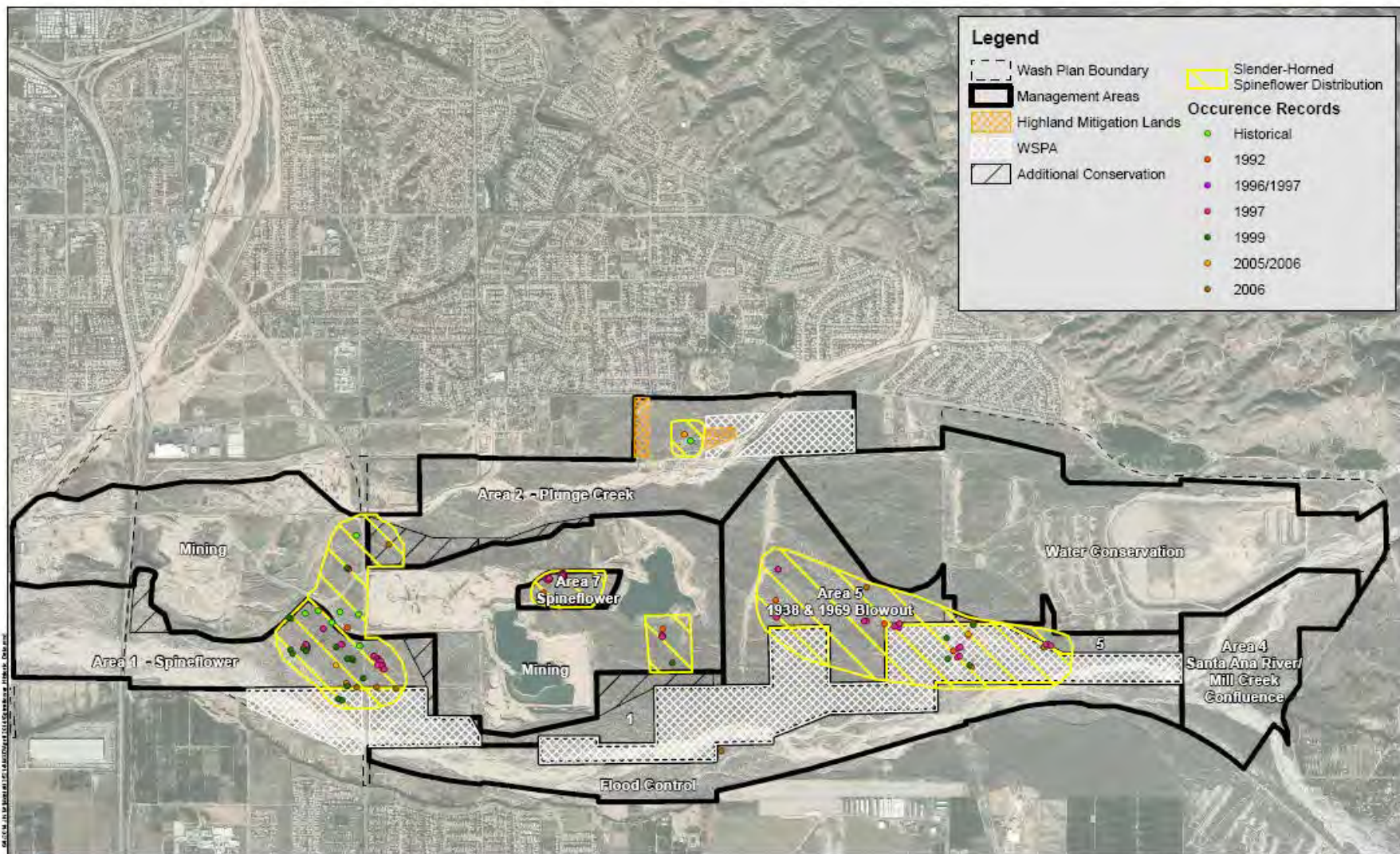
Legend

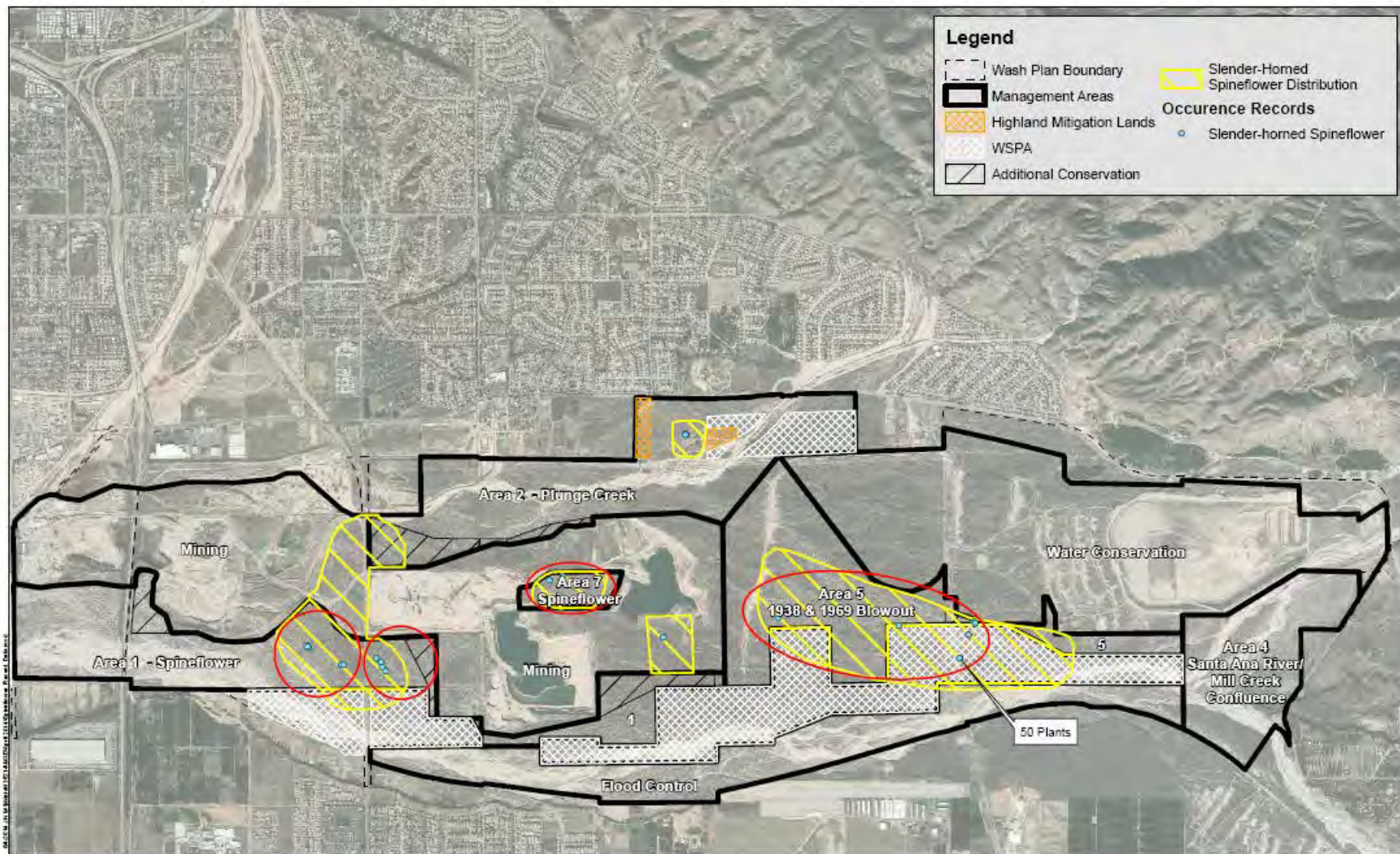
- | | | | |
|--|-------------------------------|----------------------------------|------------------------------|
| ★ Nest Locations | EVWD Planned Spreading Basin | D Levee Habitat Enhancement | Wooly Star Preservation Area |
| ● Known Cholla Locations | Enhanced Recharge Canal | Flood Control Land Dedication | WASH_PLAN_BOUNDARY |
| Cholla and Prickly Pear Area | Existing Recharge Basins | Greenspot Levee Removal | |
| Suspected Cactus Area (not accessible due to construction) | Planned Spreading Basin | Plunge Creek Habitat | |
| | SAR Maintenance Roads | Plunge Creek Habitat Enhancement | |
| | <all other values> | Spineflower Preservation Area | |
| | Cone Camp Property Dedication | | |

CACTUS WREN DISTRIBUTION



Rea and Weaver (1990)





CA DEPARTMENT OF FISH AND WILDLIFE COORDINATION

CA DEPT. OF FISH AND WILDLIFE

- California ESA compliance
 - Woollystar
 - Spineflower
 - “fully mitigated”
- Two HCP alternatives
 - Consistency determination with Federal Biological Opinion for the HCP
 - 2081 Incidental Take Permit

SCHEDULE/BUDGET UPDATE AND NEXT MEETING

SCHEDULE

[illegible]

Wash Plan Revenue

Agency	Payments	Balance Due
San Bernardino Valley WCD	\$ 78,176.00	\$ 17,511.40
SBV Municipal Water District	\$275,000.00	\$ 0.00
CEMEX	\$ 7,911.80	\$175,355.20
Robertson's	\$ 0.00	\$183,267.00
City of Highland	\$ 28,638.23	\$ 19,092.15
East Valley Water District	\$ 23,861.25	\$ 0.00
City of Redlands	\$ 28,638.23	\$ 19,092.15
Redlands Utilities Department	\$ 23,861.25	\$ 0.00
County of San Bernardino (reduced)	\$ 23,861.25	\$ 0.00
SB County Flood Control District	\$ 28,638.23	\$ 19,092.15
Reduction for County of SB	<u>\$ 0.00</u>	<u>\$ 23,869.13</u>
TOTAL INCOME	\$518,586.24	\$457,279.18

Wash Plan Expenses

Wash Plan Activity

Revisions to Draft HCP & Revised EIS

Consultants \$ 54,930.05

Randy Scott \$ 9,377.05

ICF Jones & Stokes \$11,553.00

RBF Consulting \$34,000.00

Legal Support \$ 7,080.70

New Appraisal for Land Exchange \$ 0.00

Agency Support/Project Management \$ 57,476.92

Outreach/Communications \$ 0.00

Miscellaneous: meeting supplies, graphics \$ 189.75

Reimbursement of Pre-Paid Interim Work \$188,365.40

TOTAL EXPENSES \$308,042.82

Revenue \$518,586.24 less Expenses \$308,042.82 **NET INCOME \$210,543.42**