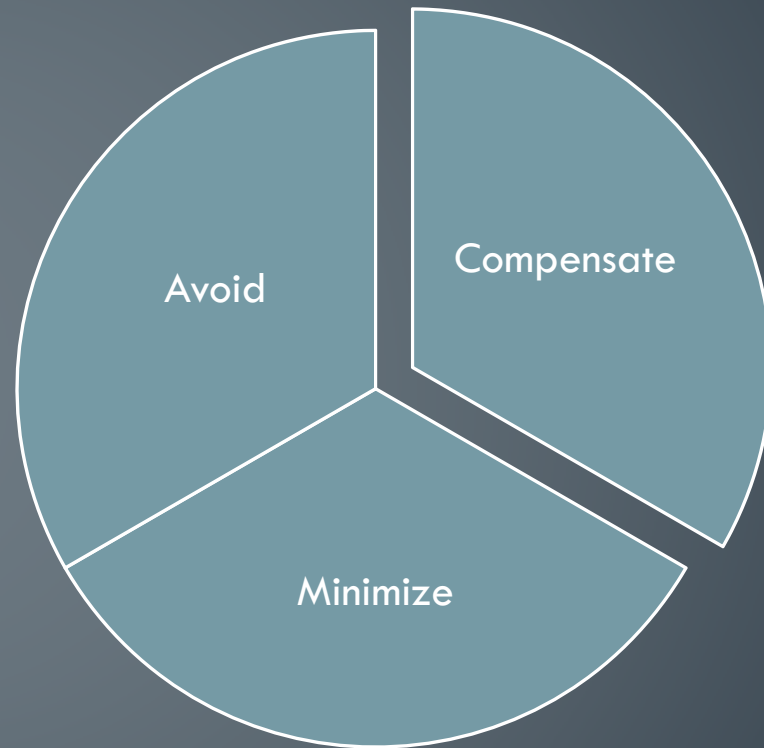


HCP Update and Structure

ESA Compliance



Habitat Management: Full, Partial, and Spot Treatments between Plunge Creek and the SAR



Treatment Types for Non-Native Grasses: Grazing

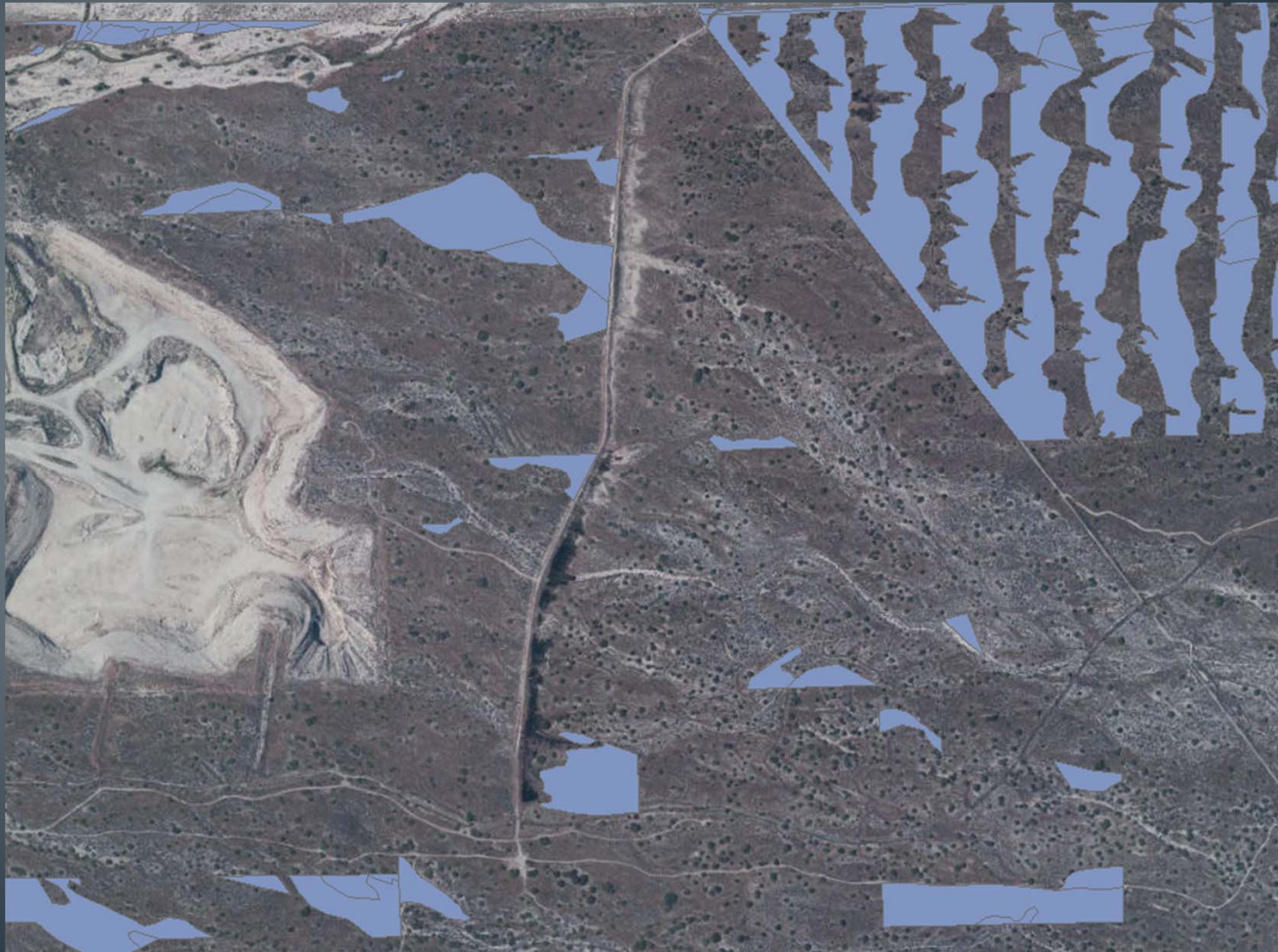


Treatment Types for Non-Native Grasses:

Fire



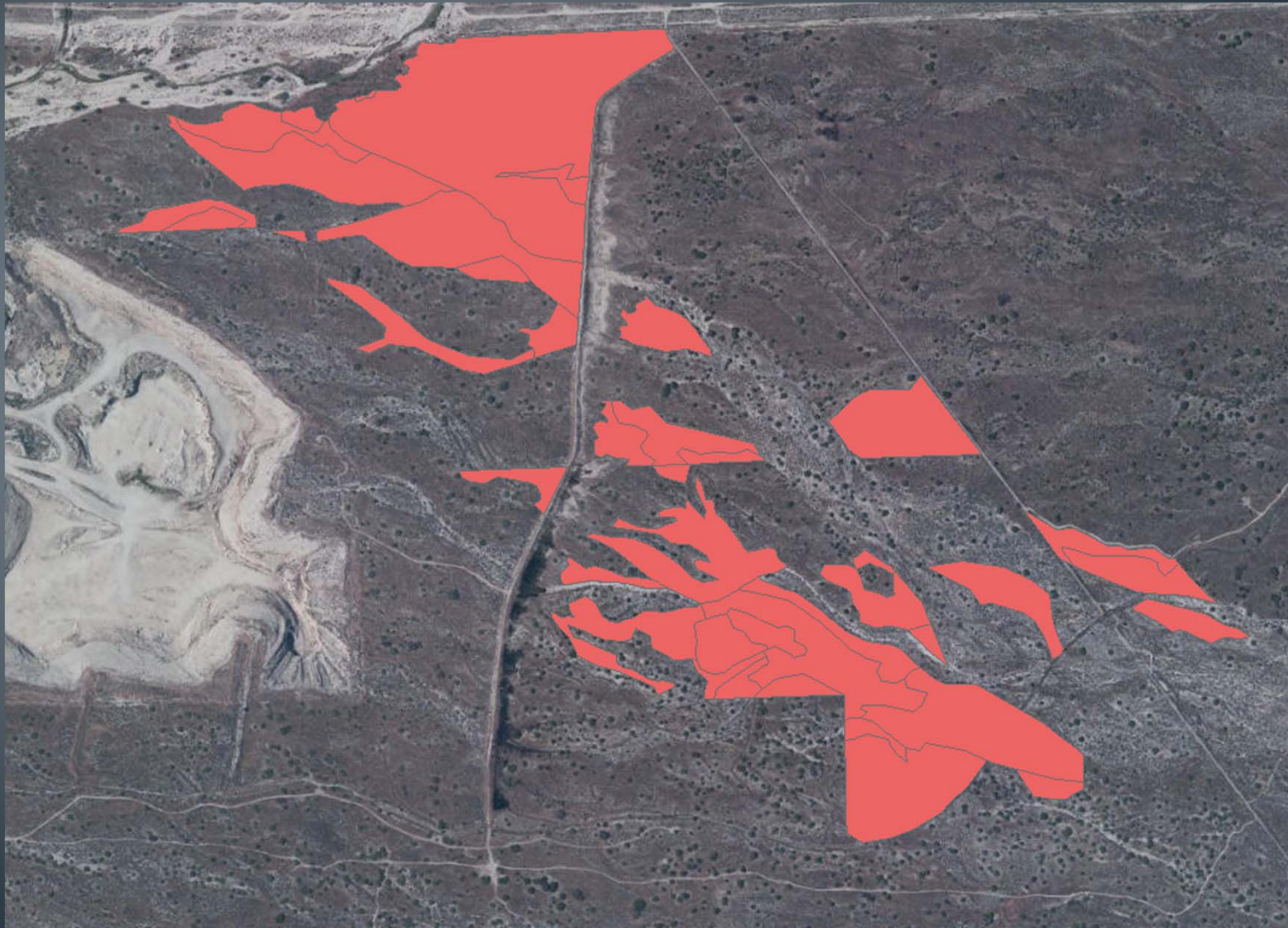
Treatment Types for Non-Native Grasses: Herbicides



Treatment Types for Non-Native Grasses: Hydrology



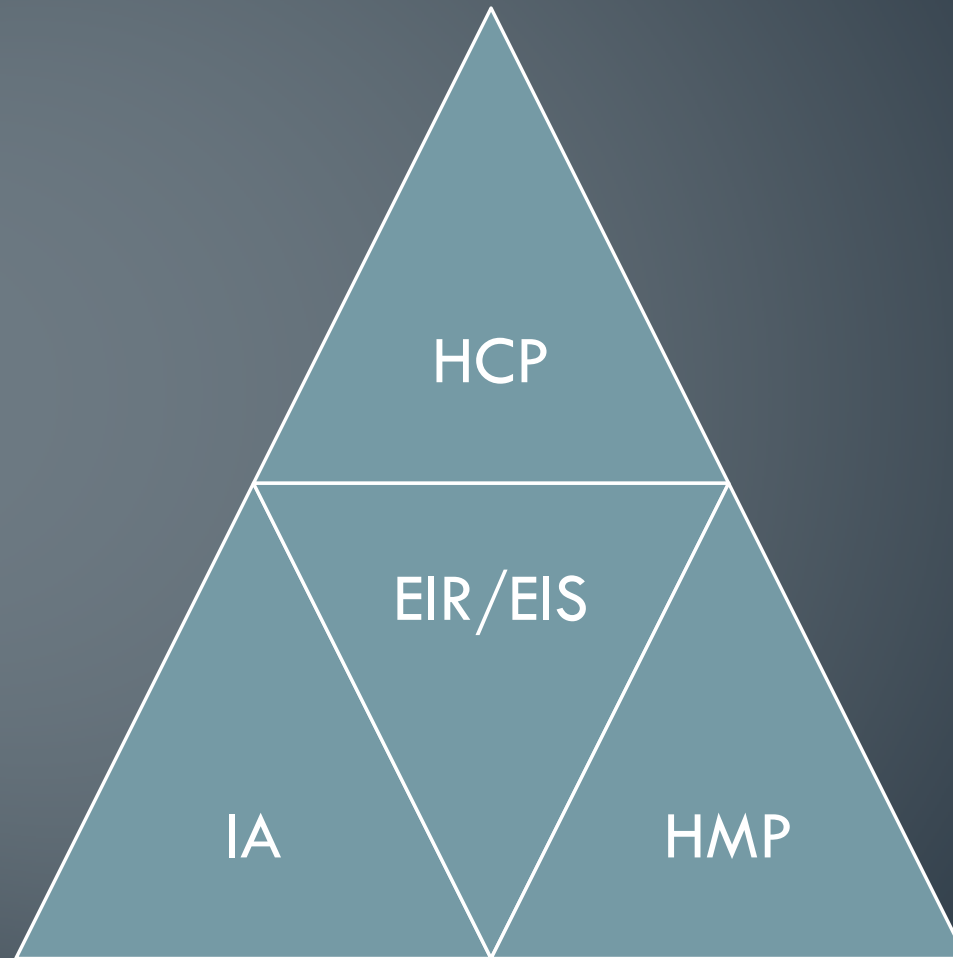
Treatment Types for Reducing Cover: Thinning



Invasive Grass Implementation Plan

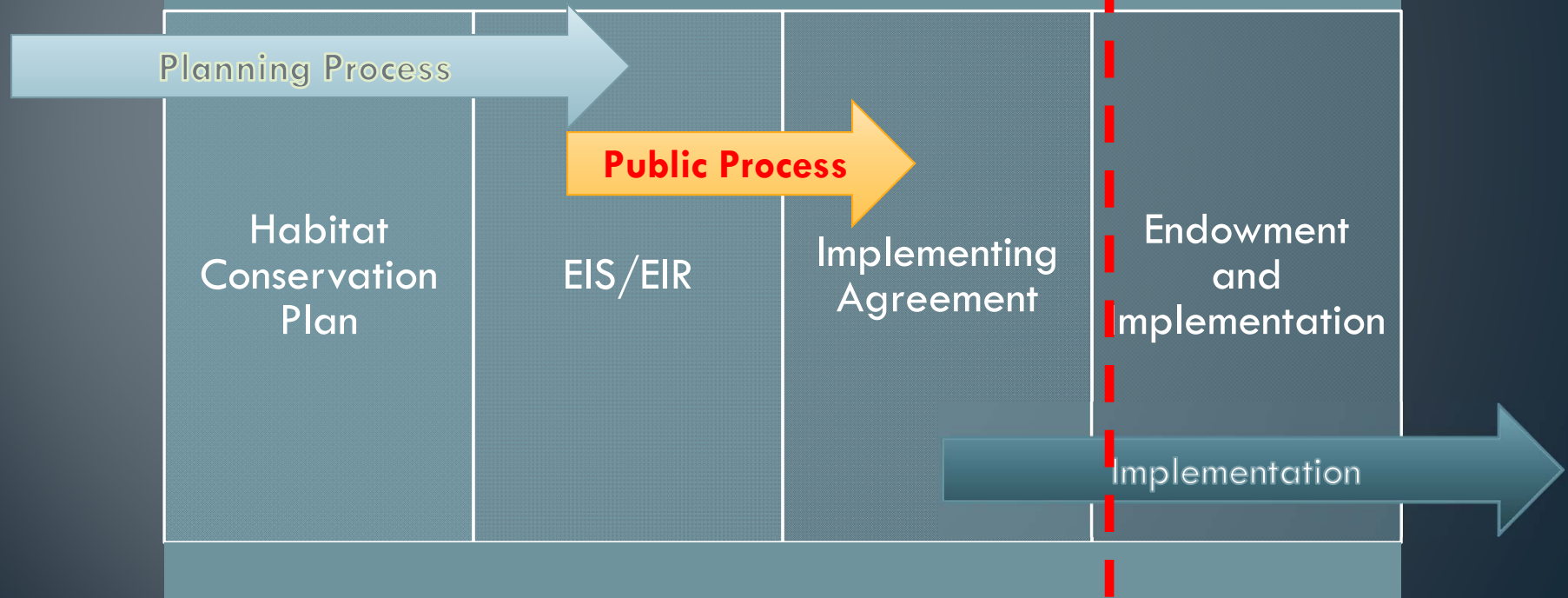


Wash Plan Components

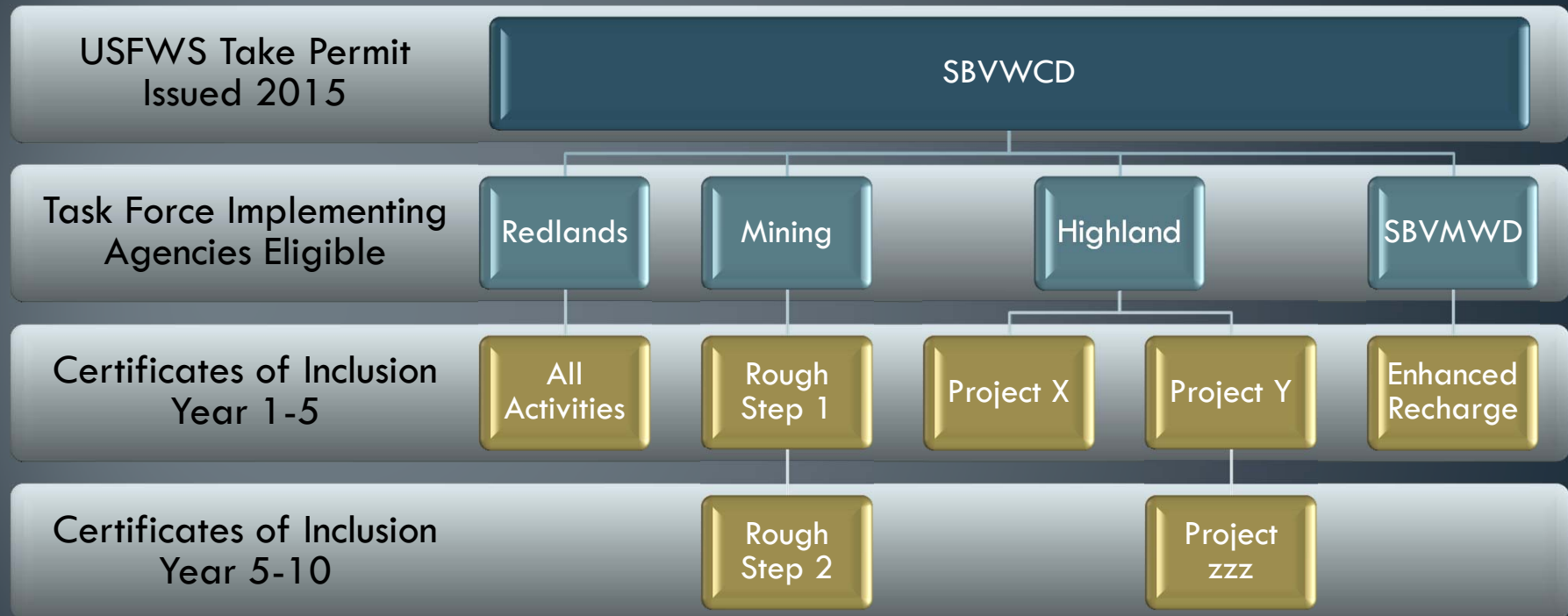


What's in a Wash Plan

Wash Plan



Take Permit Approach





Wash Plan Endowment and Funding

Wash Plan Cost and Endowment

- Mitigation (land management) cost for the wash plan are currently estimated at approximately \$400,000 per year from endowment
- Jump start (early actions) will allow immediate progress to be made in the first 7 years
- 4% Cap Rate will be proposed
- \$400K plus jump start funding equals approximately \$10 million for endowment

Wash Plan Endowment Funding

- Proposed to allocate the Funding of the endowment on a combination of
 - Land (acre footprint)
 - Species impacts categories (high, med and low)
- Endowment could be funded in year 1 or before project is initiated in the rough step
- Entity contribution estimates in March
- Scheduling review meetings with entities
- Comments will be incorporated and Task Force review
- Details go into the implementing agreement



Environmental Documentation and Legislation

Supplemental Environmental will cover:

- Land exchange between BLM and SBVWCD (legislation required)
- Amend SCRMP for Upper Santa Ana River Area (ACEC designation)
- Authorize implementation and “take” associated with HCP

Legislation: Three Wash Plan Needs

- Remove land withdrawal impeding the land exchange
- Enter into an exchange with BLM for specific lands with the District for purposes of the Wash Plan implementation
- Require that BLM lands considered “additionally managed” within the Wash Plan be permanently conserved for conservation/habitat purposes

What's Next

- Working draft Wash Plan HCP- March 30, 2015
- Supplemental EIS/EIR- March 17, 2015
- Circulation of Draft EIR/EIS- June 2015
- Finalization of HCP package- August 2015
- Adoption of Environmental documentation- November 2015